



James Street, Gillingham ME7 1DJ

£1,350 Per Month

CR Real Estate are delighted to present this spacious two-bedroom home, available for immediate occupancy.

The property offers two reception rooms, providing flexible living space, along with a modern fitted kitchen complete with a cooker and washing machine. Two doubled size bedrooms and a family bathroom situated separately upstairs. Additional benefits include a useful basement and a private rear garden.

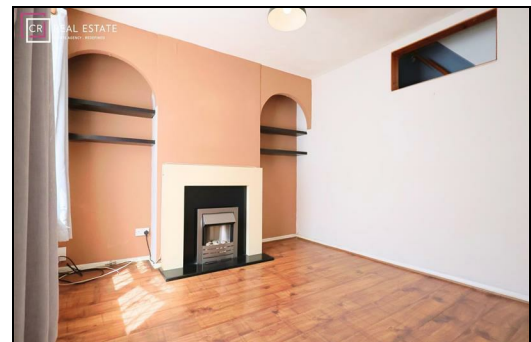
Ideally located close to local schools, Gillingham town centre, and Gillingham Railway Station, the property is also within easy reach of Medway Maritime Hospital, making it an excellent choice for commuters and healthcare professionals alike.

Early viewing is highly recommended.

CR Real Estate are part The Ombudsman Redress Scheme and are a member of the Propertymark Client Money Protection Scheme. Tenant deposits are protected by the Tenancy Deposit Scheme. For more information, please contact us.

Client Money Protection is provided by: Client Money Protect. Scheme Ref: CMP004209

Independent redress is provided by: The Property Ombudsman (TPO). Membership Number: E01687



Energy Efficiency Rating		Current	Potential
Very energy efficient - lower running costs			
(92 plus) A			
(81-91) B			
(69-80) C			
(55-68) D			
(39-54) E			
(21-38) F			
(1-20) G			
Not energy efficient - higher running costs			
England & Wales		EU Directive 2002/91/EC	

Environmental Impact (CO ₂) Rating		Current	Potential
Very environmentally friendly - lower CO ₂ emissions			
(92 plus) A			
(81-91) B			
(69-80) C			
(55-68) D			
(39-54) E			
(21-38) F			
(1-20) G			
Not environmentally friendly - higher CO ₂ emissions			
England & Wales		EU Directive 2002/91/EC	



ESTATE AGENCY : REDEFINED

