



King Edward Road | | Maidstone | ME15 6PL

£340,000



**LEAFY
ESTATES**

Key features

- Popular King Edward Road - close to town centre
- Three spacious bedrooms
- Side access and front and lengthy rear garden
- Red brick with Bay Windows
- High Ceilings
- In need of modernisation

Description

Spacious Edwardian-style end of terrace red brick property with bay windows and front and rear garden. In need of modernisation but with the generous proportions of the interior with potential to make a charming family home, in our opinion.

Directions



Spacious Edwardian-style end of terrace red brick property with bay windows and front and rear garden. In need of modernisation but with the generous proportions of the interior with potential to make a charming family home, in our opinion.

Accommodation comprises:

Basement: Cellar accessed via under stairs door, window giving onto light well to front

Ground floor:

External Porch

Hallway: With stairs to first floor

Kitchen: With wall and floor-mounted kitchen units with freestanding cooker, extractor hood, space and plumbing connections for under-counter washing machine and dishwasher; vinyl to floor

Front reception room: With carpet to floor and bay window

Rear reception room: With carpet to floor, built-in storage unit

Conservatory: With carpet to floor, in poor overall condition

Toilet: With washbasin

First Floor:

Front bedroom: With carpet to floor and bay window

Bedroom 2: With carpet to floor

Bedroom 3: With carpet to floor

Bathroom: With white bathroom suite with shower over bathtub, part-tiled walls

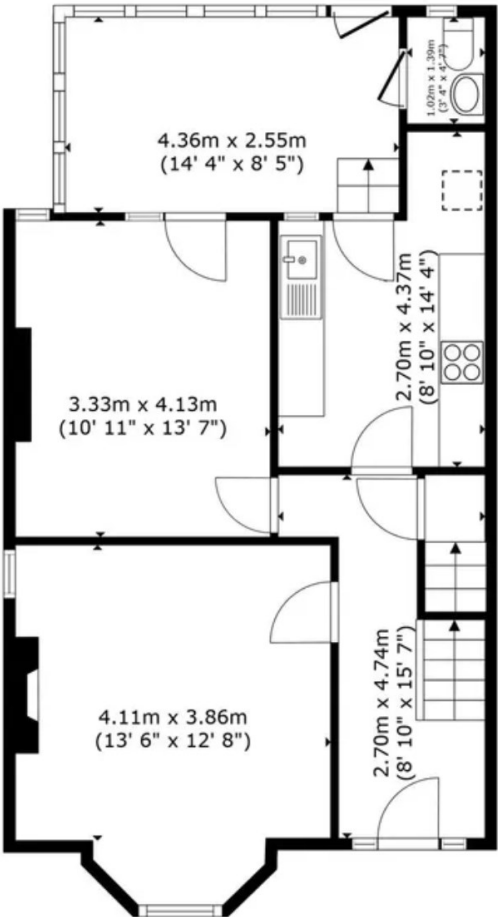
Landing

Exterior:

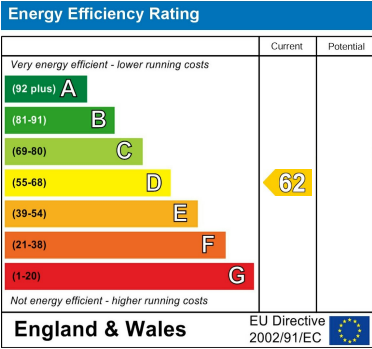
Front garden with tiled path area of lawn



Floor plans



FLOOR 1



Council Tax Band C EPC Rating D



68 South Hill Avenue
Harrow
HA2 0NH
02081501988
sales@leafyestates.co.uk
leafyestates.co.uk