



COLLEGE APPROACH, SE10

£3,250 per month

Beautiful period house
Four bedrooms
Private garden
Desirable location
Views of Cutty Sark
Energy rating: c

@marshandparsons
marshandparsons.co.uk

MARSH &
PARSONS



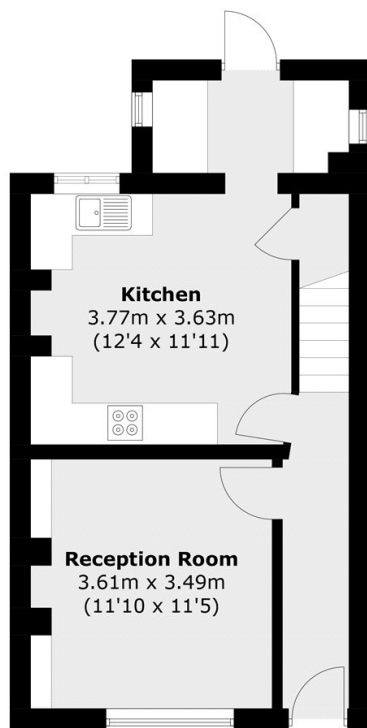
ABOUT THE PROPERTY

A beautiful four bedroom period house located in a desirable location of Greenwich town centre. The ground floor of the property features a spacious reception room and a fully fitted eat-in kitchen as well as a utility room leading into a private garden. The first and second floors offer four great sized bedrooms with views of the Cutty Sark and a family bathroom suite with a shower.

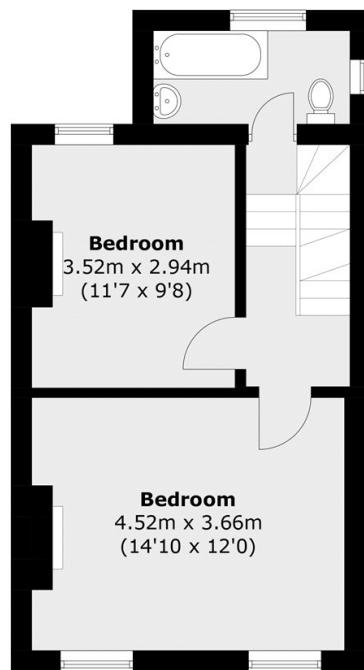
Cutty Sark DLR station is only a few minutes away on foot, accessible to Canary Wharf and the city. Greenwich centre and the park are also located close by.



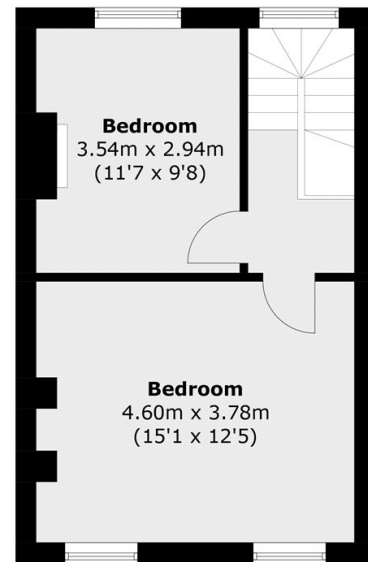
STEP INSIDE COLLEGE APPROACH



Ground Floor



First Floor



Second Floor

Total area (approx.): 111.4 sq. m (1,199.0 sq. ft)

Greenwich
020 8815 2230

Energy Rating: C We aim to make our particulars both accurate and reliable. However, they are not guaranteed; nor do they form part of an offer or contract. If you require clarification on any points then please contact us, especially if you're traveling some distance to view. Please note that appliances and heating systems have not been tested and therefore no warranties can be given as to their good working order

**MARSH &
PARSONS**