



MAP estate agents
Putting your home on the map

Rosewarne Downs, Camborne

Rosewarne Downs, Camborne

Camborne Train Station 2 miles | Tehidy Golf Club 3 miles | Truro 14 miles | Newquay Airport 27 miles | Exeter (M5) 100 miles
(Distances are approximate)

A modernised former farmhouse with stone elevations in a rural backwater having an appealing contemporary interior and some 2.7 acres of nearby pasture. Set in a rural location this beautifully refurbished five-bedroom family home offers a rare combination of sizeable accommodation in a quiet and peaceful location. Internally the property offers two reception rooms, five bedrooms - the principal of which has an en-suite and dressing area and two first floor family bathrooms.

Entrance porch | Living room | Hallway | Cloakroom | Kitchen/diner | Office/bedroom five | Utility room | Four first floor bedrooms (principal with dressing area and en-suite) | Two bathrooms | Garden | Entertaining patio | Extensive parking area | Pasture land with stable block (2.7 acres)

£640,000 Freehold



Property Introduction

This spacious and tastefully refurbished property is situated at the end of a long driveway which services just three other properties.

The accommodation on offer is extremely flexible, and could be configured in a number of ways to suit different requirements. Externally there are two delightful areas of garden which offer total privacy and approximately 2.7 acres of enclosed land with mains water and stable block

Featuring double glazing, heating is provided by an Air Source system.

Viewing our interactive virtual tour is strongly recommended prior to arranging the closer inspection of this property.

Location

Rosewarne Dairy Farm is situated just to the north of Duchy College, within easy reach of the A30, within the parish of Illogan and is extremely secluded but also well placed for access to main county routes, just a twenty five minute drive to Truro.

The nearest main town of Camborne offers a good selection of shopping and business facilities together with a mainline rail station to London Paddington. The spectacular North Cornish coastline is within a short drive together with

many rural footpaths in the valley itself and Tehidy Park.

ACCOMMODATION COMPRISES

uPVC stable door opening to:-

ENTRANCE PORCH

uPVC window to front, cloaks hanging space and glazed door to:-

LIVING ROOM 26' 9" x 11' 3" (8.15m x 3.43m) maximum measurements

An immensely impressive reception room with pine flooring, two uPVC double glazed windows to front elevation. Beamed ceiling and exposed stone inglenook fireplace with large multi-fuel stove and a recess to either side. Two radiators. Door through to:-

INNER HALLWAY

Marble tiled floor. uPVC double glazed French doors to side garden. Doors leading to office/bedroom five, cloakroom, utility room, kitchen/dining room and stairs to first floor. .

KITCHEN/DINER 17' 8" x 11' 8" (5.38m x 3.55m)

Tiled floor. Range of floor standing and wall mounted cupboard and drawer units with square edged polished granite worksurfaces over. Inset single bowl stainless steel sink with cut granite drainer and mixer tap over. New integrated dishwasher (2026), space for fridge/freezer. uPVC double glazed window to rear. uPVC double glazed French doors to side garden. Radiator. Spotlights.

UTILITY ROOM 11' 2" x 7' 7" (3.40m x 2.31m)

Tiled floor. Floor standing cupboard and drawer units with single bowl stainless steel sink unit with hot and cold taps over and drainer board to side. Wall mounted cupboard and under shelf storage for washer/dryer and fridge. uPVC double glazed window to rear. Radiator and Heat Source Pump Plant.

OFFICE/BEDROOM FIVE 11' 2" x 7' 0" (3.40m x 2.13m) L-shaped, maximum measurements

uPVC double glazed window to rear. Radiator. Spotlights and carpeted flooring.

GROUND FLOOR CLOAKROOM

Tiled floor. Part tiled walls. Low level WC and pedestal wash hand basin. Radiator. uPVC double glazed obscure window to side. Extractor fan.



FIRST FLOOR LANDING

A large split landing leading to all rooms and bathrooms.

PRINCIPAL BEDROOM WITH DRESSING AREA 21' 9" x 10' 11" (6.62m x 3.32m) maximum measurements

A dual aspect room with uPVC double glazed windows and uPVC double doors opening to a Juliet balcony to rear with countryside views. Three built-in wardrobes. Spotlights, radiators and door leading to:-

EN-SUITE SHOWER ROOM

Double shower cubicle with plumbed shower over, low level WC and pedestal wash hand basin. Wall mounted heated towel rail. Three spotlights. uPVC double glazed obscure window to side. Tiled floor and walls.

FAMILY BATHROOM

Tiled walls. Panelled bath with shower over and side screen, low level WC and vanity wash hand basin with cupboard below, mirror, light and shelf above. Wall mounted heated towel rail. Extractor fan.

BEDROOM TWO 11' 7" x 7' 8" (3.53m x 2.34m) plus recess

uPVC double glazed window to front with delightful views to countryside beyond. Radiator. Spotlights.

BEDROOM THREE 8' 11" x 8' 5" (2.72m x 2.56m)

uPVC double glazed window to rear. Built-in double wardrobe. Radiator. Spotlights. Loft access.

BEDROOM FOUR 10' 10" x 6' 5" (3.30m x 1.95m) maximum measurements

uPVC double glazed window to front with countryside views. Radiator. Spotlights.

SITTING AREA 11' 6" x 10' 1" (3.50m x 3.07m) maximum measurements

Doors off to all rooms. uPVC window to front, carpeted flooring, radiator and loft access.

SECOND FAMILY BATHROOM

Panelled bath, low level WC, pedestal wash hand basin and double shower cubicle with plumbed shower unit. Five spotlights. uPVC double glazed obscure window to side. Wall mounted heated towel rail. Tiled floor and walls.

OUTSIDE

As previously mentioned the property benefits from two delightfully private gardens to both sides of the property. The first garden is accessed via the French doors from the inner hallway which lead out on to a concrete footpath which skirts the outside of the house to a very pleasant level lawned garden which is remarkably private and offers a high degree of privacy and seclusion. Gated access to the front of the property. The second side garden, accessed via the kitchen/dining room, is predominantly a brick paved courtyard with a range of raised shrubs and borders, again offering complete privacy with a gate to the front. The property also benefits from a parking area providing parking for several vehicles. There is also approximately 2.7 acres suitable for grazing or hobby farming which enjoys delightful countryside views.

AGENT'S NOTE

Please be advised that the Council Tax band for the property is band 'B'.

SERVICES

The following services are available at the property however we have not verified connection. Mains electricity, mains metered water, private drainage (Septic Tank installed 2020) and Heat Air Source Pump (installed 2022), broadband/telephone subject to tariffs and regulations.

DIRECTIONS

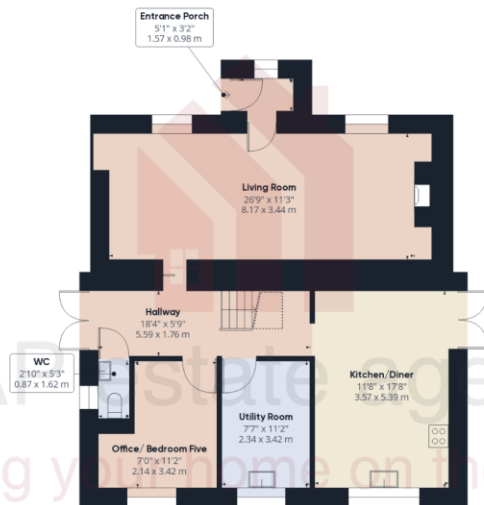
From the Parish Church head out of town taking the first turning right into Wellington Road, at a staggered junction continue left into Trelawney Road and at a mini-roundabout take the second exit into Tehidy Road, drive along the Tehidy Road, heading past Duchy College on Puggis Hill, continue for roughly a third of a mile and then take the first right. Follow the road signposted Tressingam Meadow. Drive along the road and the property will be located on the left-hand side. If using What3Words:spinnners.hippy.chaos



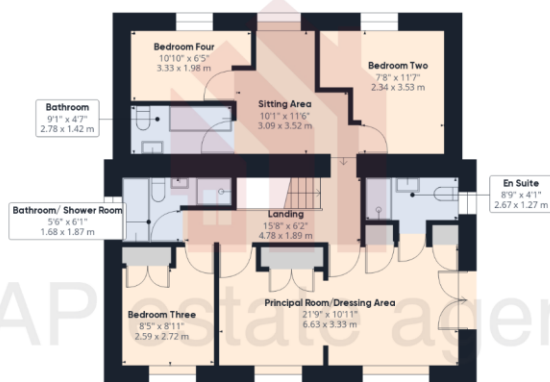


MAP's
Top reasons to view this home

- Superbly presented five bedroom country house
- Approximately 2.7 acres of land
- 27' Living room
- 22' Principal bedroom with dressing area and en-suite
- Two bathrooms
- Enclosed, private gardens and grounds
- Spacious kitchen/diner
- Enclosed gardens and parking for several vehicles
- Beautiful countryside views
- Air source heating



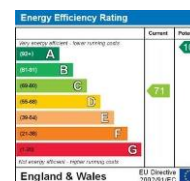
Ground Floor



Floor 1

Approximate total area^m
 1698.12 ft²
 157.76 m²

Reduced headroom
 15.52 ft²
 1.44 m²



(1) Excluding balconies and terraces

Reduced headroom (below 1.5m/4.92ft)

While every attempt has been made to ensure accuracy, all measurements are approximate, not to scale. This floor plan is for illustrative purposes only.

GIRAFFE360

01209 243333 (Redruth & Camborne)
 01736 322200 (St Ives & Hayle)

01326 702400 (Helston & Lizard Peninsula)
 01736 322400 (Penzance & surrounds)

01326 702333 (Falmouth & Penryn)
 01872 672250 (Truro)

Gateway Business Park, Barmcoose, Cornwall TR15 3RQ

sales@mapestateagents.com
www.mapestateagents.com

IMPORTANT: Map estate agents for themselves and for the vendors or lessors of this property whose agents they are give notice that the particulars are produced in good faith and are set out as a general guide only and do not constitute any part of a contract and no person in the employment of Map estate agents has any authority to make or give any representation or warranty in relation to this property.

