



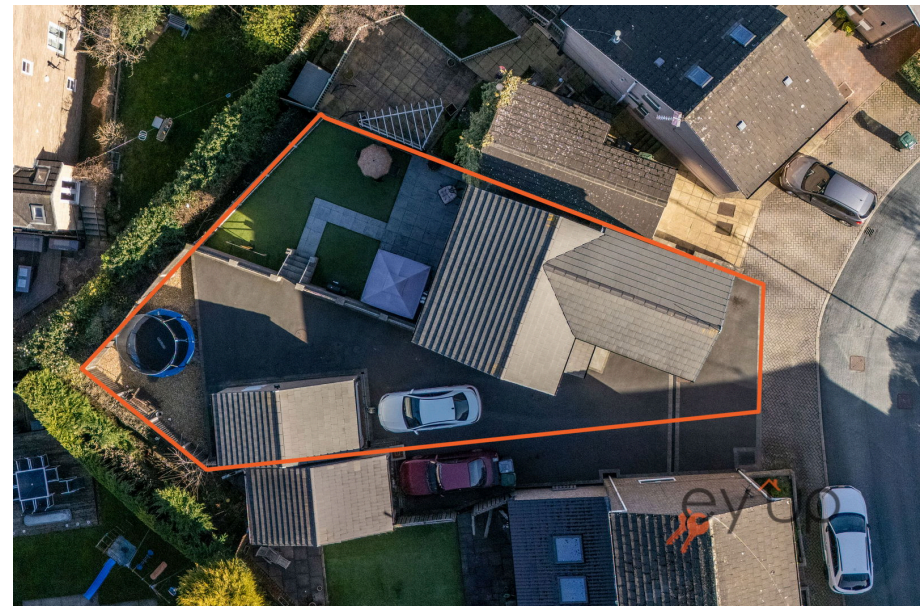
ey up

**Evesham House, 1A, Evesham Grove,
£400,000**

5 2



Evesham House is a beautifully designed five bedroom detached home, built just five years ago by a highly regarded local builder. Offering generous living space, a high quality finish throughout, and a layout perfectly suited to modern family life, this is a home ready to move straight into and enjoy from day one. With Apperley Bridge train station just a few miles away and within easy reach of Leeds Bradford Airport, this home is in prime position.





Floor Area
139 sq. ft.

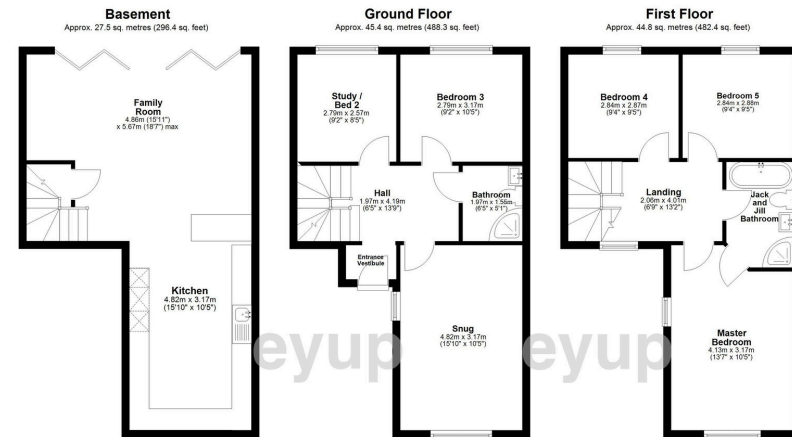
Tenure
Freehold

Service Charge
£0 per annum

Ground Rent
£0 per annum

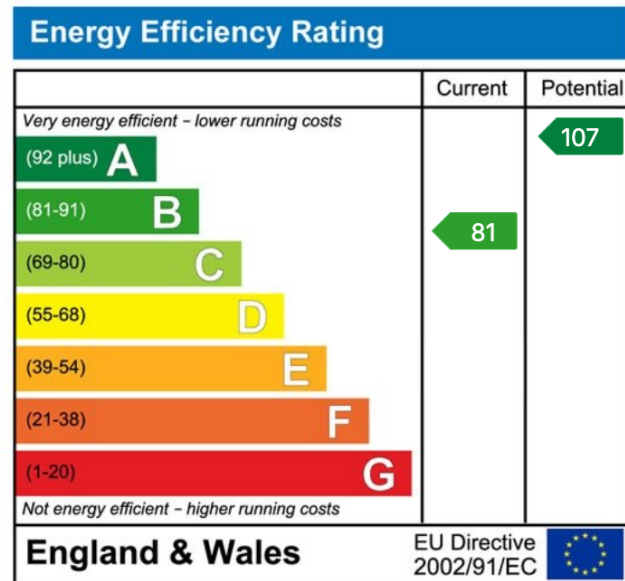


Evesham House produced by ey up



This floor plan is for illustration purposes only. It is not drawn to scale. Any measurements, floor plans (including any total floor areas), openings and orientation are approximate. No details are guaranteed, they can not be relied upon for any purpose and they do not form part of any agreement. No liability is taken for any error, omission or misstatement. A party must rely upon its own inspections. Proceeded for eye up.

Total area: approx. 117.7 sq. metres (1267.1 sq. feet)



Based in the heart of Yorkshire, ey up combines traditional Yorkshire values, with outstanding service. We believe in more is, well, more!

A fresh approach to buying and selling homes, the Yorkshire way!

01484 972 054
hello@eyup-move.me

eyup-move.me