



2



1



1



D





Situated in the very heart of Worthing town centre and just yards from the seafront, this beautifully presented and exceptionally well-appointed two double bedroom second floor apartment forms part of a desirable recently developed block on South Street. Perfectly positioned to enjoy everything the town has to offer, the property provides immediate access to a wide range of shops, cafés, restaurants, leisure facilities and transport links, making it an ideal home for professionals, downsizers, first-time buyers and investors alike. Further benefits include the remainder of a 999-year lease and being offered to market with no ongoing chain.

Key Features

- Beautifully presented and well-appointed second floor apartment
- Extensive open-plan kitchen, living and dining area with a contemporary fitted kitchen
- Prime town centre location and yards from Worthing seafront
- Luxury modern bathroom with shower over bath
- Offered for sale with no onward chain
- Two generous double bedrooms with impressive high ceilings
- Floor-to-ceiling windows providing excellent natural light
- Remainder of a 999-year lease
- Leasehold
- EPC Rating D | Council Tax band A

Summary

Internally, the apartment boasts an impressive sense of space and light, enhanced by beautiful high ceilings and floor-to-ceiling windows throughout. At the heart of the home is an extensive open-plan kitchen, living and dining room, creating a superb space for both everyday living and entertaining. The contemporary black/anthracite matt-effect kitchen offers a sleek and stylish finish and is complemented by a range of integrated appliances including a dishwasher, washing machine and fridge freezer. Hardwood flooring runs throughout the accommodation, adding warmth and continuity to the modern design, while the generous open-plan layout perfectly suits modern lifestyles.

The property further comprises two well-proportioned double bedrooms, both benefiting from the apartment's impressive ceiling heights and bright, airy feel. The luxury bathroom has been thoughtfully designed and features a panel-enclosed bath with a glass shower screen and a rainfall shower above, creating a contemporary and relaxing space. Finished to a high standard throughout and ready for immediate occupation, this outstanding apartment combines stylish modern living with an enviable central location, offering a fantastic opportunity to enjoy coastal living in the heart of Worthing.

Tenure

Leasehold - Remainder of a 999 year lease
Service Charge - approx £2400 P/A



robertluff.co.uk

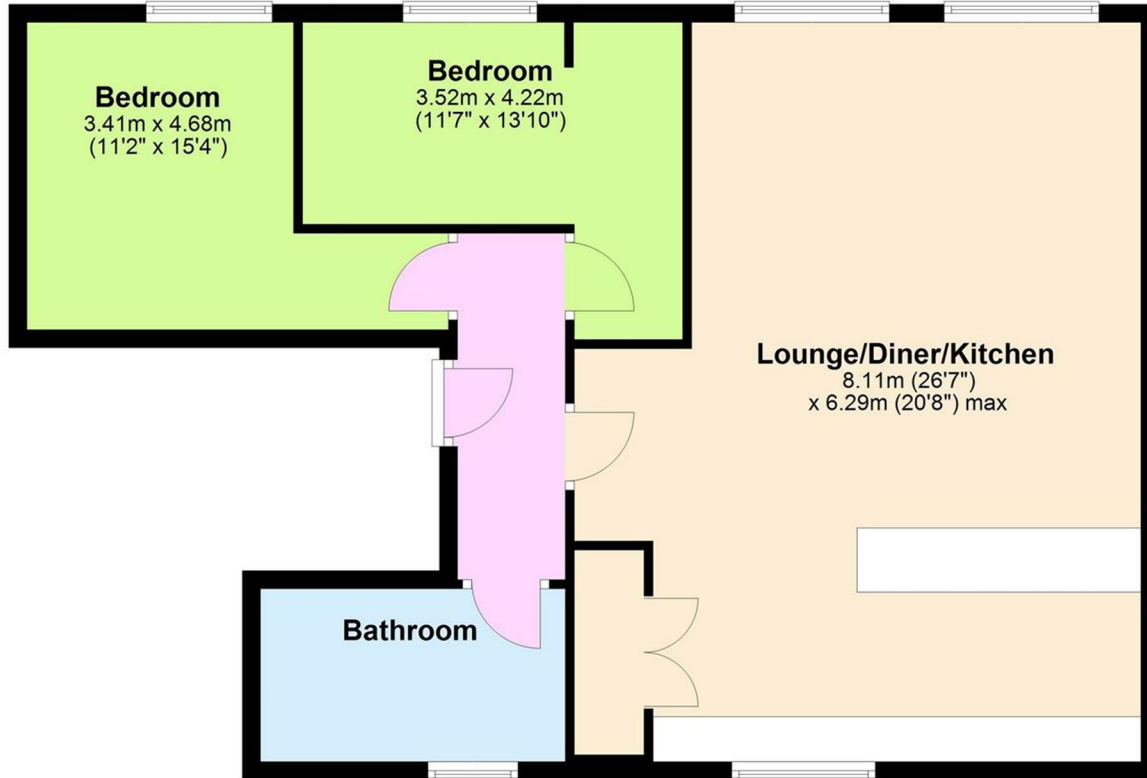
30 Guildbourne Centre, Worthing, West Sussex, BN11 1LZ | 01903 331247 | info@robertluff.co.uk

Robert
Luff & Co

Floor Plan South Street

Floor Plan

Approx. 82.4 sq. metres (887.4 sq. feet)



Total area: approx. 82.4 sq. metres (887.4 sq. feet)



Energy Efficiency Rating			Environmental Impact (CO ₂) Rating		
	Current	Potential		Current	Potential
Very energy efficient - lower running costs			Very environmentally friendly - lower CO ₂ emissions		
(92 plus) A			(82 plus) A		
(81-91) B			(61-81) B		
(69-80) C			(49-60) C		
(55-68) D			(35-48) D		
(39-54) E			(23-34) E		
(21-38) F			(11-23) F		
(1-20) G			(1-20) G		
Not energy efficient - higher running costs			Not environmentally friendly - higher CO ₂ emissions		
England & Wales	EU Directive 2002/91/EC		England & Wales	EU Directive 2002/91/EC	

The information provided about this property does not constitute or form any part of an offer or contract, nor may it be regarded as representations. All interested parties must verify accuracy and your solicitor must verify tenure/lease information, fixtures and fittings and, where the property has been extended/converted, planning/building regulation consents. All dimensions are approximate and quoted for guidance only as are floor plans which are not to scale and their accuracy cannot be confirmed. References to appliances and/or services does not imply that they are necessarily in working order or fit for the purpose.

robertluff.co.uk

30 Guildbourne Centre, Worthing, West Sussex, BN11 1LZ

01903 331247 | info@robertluff.co.uk

Robert
Luff & Co