



2 Bed Flat/Apartment

Flat 9, 77 Dale Road
Matlock
DE4 3LT

£950 Per Month

Fletcher
& Company

F1

Flat 9, 77 Dale Road
Matlock
DE4 3LT



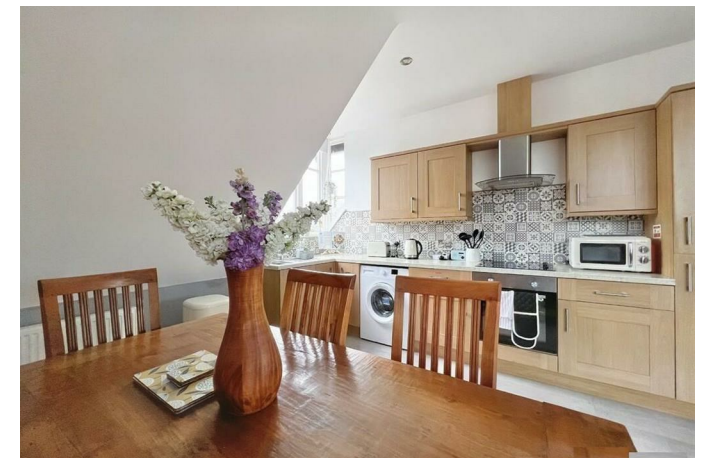
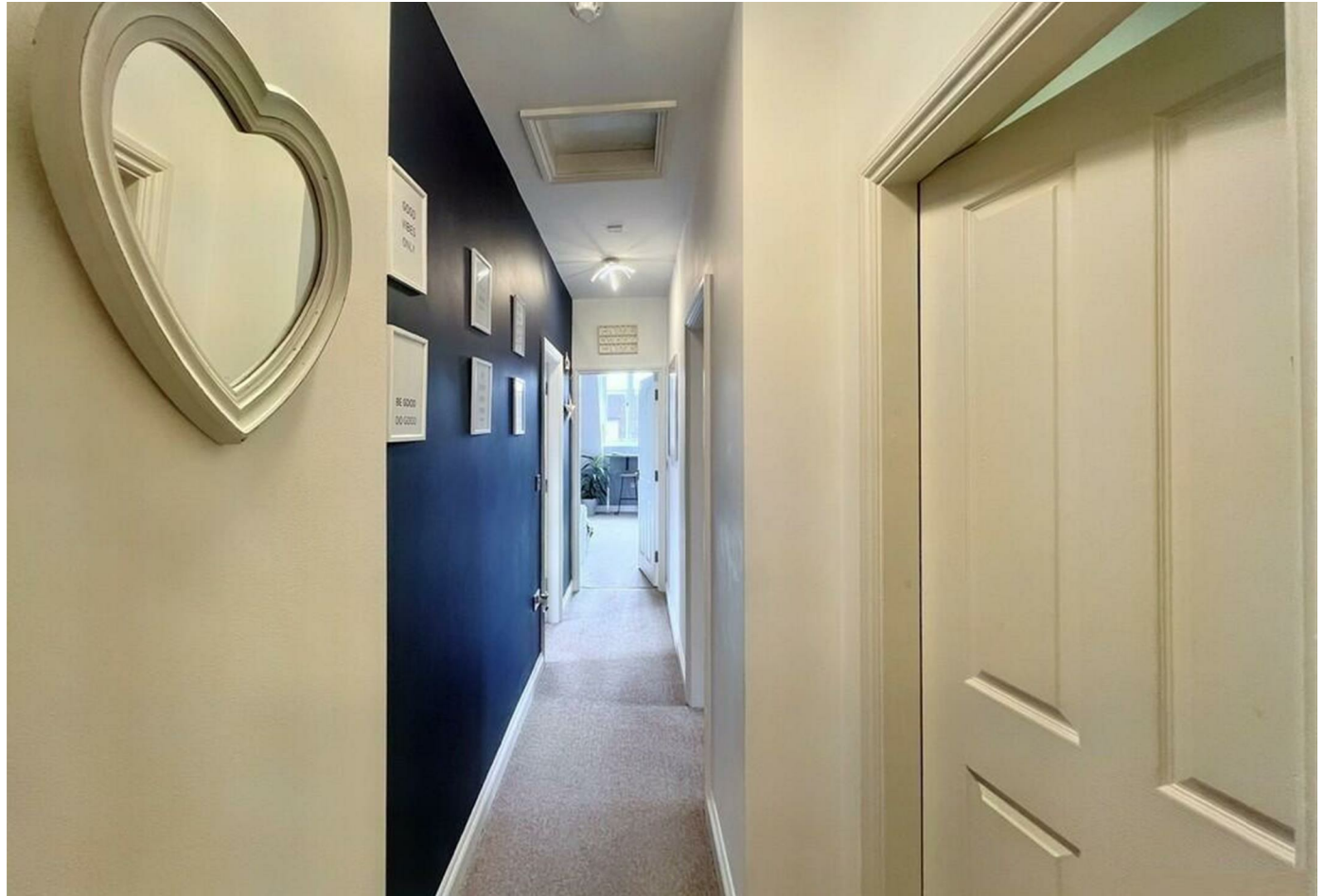
- Top Floor (Second Floor) Apartment - See Floorplan
- Extremely Spacious Apartment - Superb Views
- Two Double Bedrooms
- Open Plan Living At Its Best
- Large four piece Bathroom
- Allocated Car Parking Space
- Close To All Local Amenities
- All Transport Links Within Walking Distance
- Offers A Very Light & Spacious Feeling Throughout
- The Property Is Unfurnished & Immaculately Presented

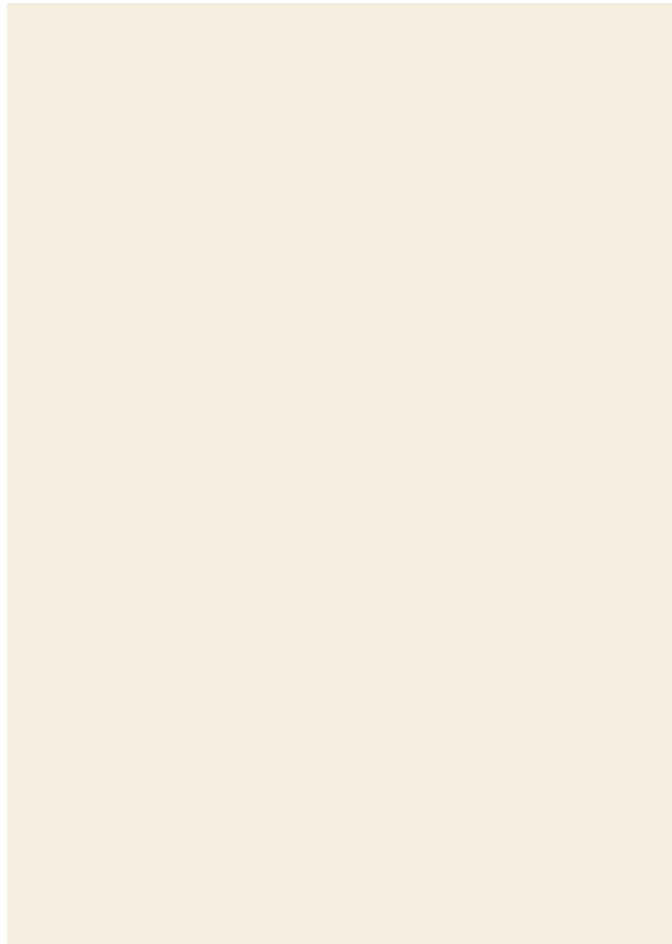
Available Mid August 2026 - A superb top floor (Second Floor) apartment, superbly positioned on Dale Road in the centre of Matlock, and benefits further from its own allocated car parking space.

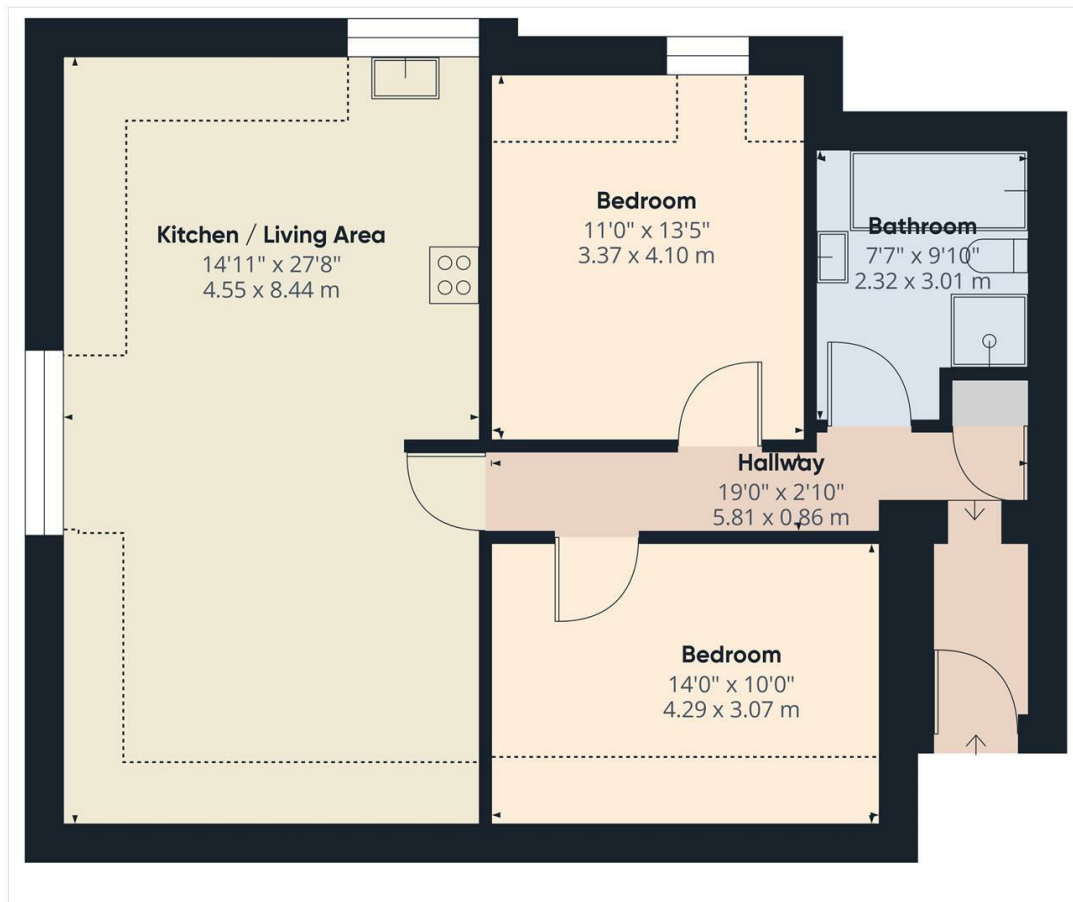
In brief this very spacious property comprises of; Two double bedrooms, a four piece bathroom, an open-plan living dining kitchen that feels light and airy. Please see the floorplan for layout and room sizes.

The property has access to outstanding road and transport links. Also, with this apartment being based in the centre of Matlock it further benefits from access to all required amenities and much, much more.

Council Tax A, Available Mid August 2026, Allocated Car Parking Space Included.







Approximate total area[®]
859.39 ft²
79.84 m²

Reduced headroom
148.65 ft²
13.81 m²

(1) Excluding balconies and terraces

Reduced headroom
..... Below 5 ft/1.5 m

While every attempt has been made to ensure accuracy, all measurements are approximate, not to scale. This floor plan is for illustrative purposes only.

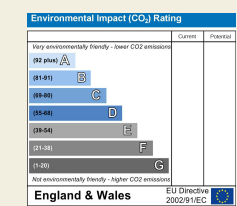
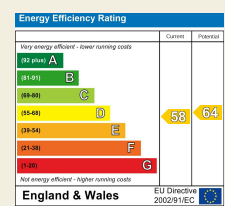
Calculations are based on RICS IPMS 3C standard.

GIRAFFE360

Duffield House
Town Street
Duffield
Derbyshire
DE56 4GD

T: 01332 843390

E: duffield@fletcherandcompany.co.uk
www.fletcherandcompany.co.uk



These particulars do not constitute an offer or a contract neither do they form part of an offer or contract. The vendor does not make or give and Messrs. Fletcher & Company nor any person employed has any authority to make or give any representation or warranty, written or oral, in relation to this property. Whilst we endeavour to make our sales details accurate and reliable, if there is any point which is of particular importance to you, please contact the office and we will be pleased to check the information for you, particularly if contemplating travelling some distance to view the property. None of the services or appliances to the property have been tested and any prospective purchasers should satisfy themselves as to their adequacy prior to committing themselves to purchase.

Fletcher & Company