



**Birch House Heather Close, Moorgate Rotherham S60 2TQ**

**welcome to**

**Birch House Heather Close, Moorgate Rotherham**

SEEING IS BELIEVING - Offered to market is this beautiful four bedroom detached property making the perfect family home. Boasting stylish & modern decor throughout with underfloor heating, three bathrooms, a delightful rear garden & patio with drive & garage providing off road parking...VIEW NOW!



### **Entrance Hall**

Having a front facing door & two built in storage cupboards.

### **Downstairs W.C.**

Fitted with a hand wash basin & a WC.

### **Lounge / Dining Room / Kitchen**

28' 11" into bay window x 26' 10" ( 8.81m into bay window x 8.18m )

Being an open plan space having a front facing double glazed bay window in the Lounge & rear facing double glazed patio doors in the Dining Room leading to the garden.

The kitchen is fitted with a range of wall & base units housing the integrated hob, oven, microwave, fridge/freezer & dishwasher with granite worktops housing the sink & drainer. There are two rear facing double glazed windows, spotlights to the ceiling & access to the utility.

### **Utility**

5' 6" x 4' 11" ( 1.68m x 1.50m )

Fitted with wall & base units with a sink & drainer & space for a washing machine. Having a side facing door.

### **Reception Room**

12' 4" x 9' 2" ( 3.76m x 2.79m )

Having a front facing double glazed window & a radiator.

### **Landing**

Having a built in storage cupboard & a radiator.

### **Bedroom One**

14' 10" x 14' 1" ( 4.52m x 4.29m )

Having a front facing double glazed window & a radiator

### **En Suite**

Fitted with a shower cubicle, a hand washbasin & a WC. Having a side facing double glazed window.

### **Bedroom Two**

12' x 10' 2" ( 3.66m x 3.10m )

Having a rear facing double glazed window & a radiator.

### **Bedroom Three**

13' 1" x 11' 7" ( 3.99m x 3.53m )

Having a front facing double glazed window & a radiator.

### **En Suite**

#### **Bedroom Four**

9' x 10' 6" ( 2.74m x 3.20m )

Having a rear facing double glazed window & a radiator.

### **Bathroom**

Being a part tiled room fitted with a bath with a shower over, a hand wash basin & a WC. Having a rear facing double glazed window, a heated towel rail & spotlights to the ceiling.

### **Outside**

To the front of the property is a small lawned garden & a drive leading to the garage providing off road parking. Also benefiting from an EV charging point.

To the rear is a beautifully presented lawned garden with a patio/seating area.



**view this property online** [williamhbrown.co.uk/Property/RTF115032](http://williamhbrown.co.uk/Property/RTF115032)

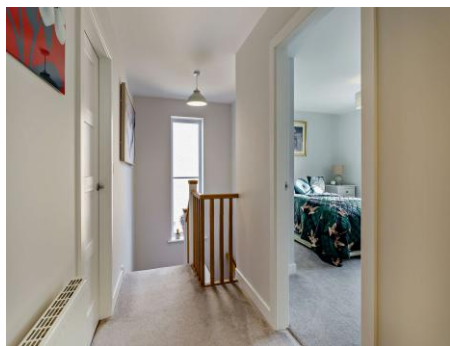


welcome to

## Birch House Heather Close, Moorgate Rotherham

- Four bedroom detached property - NO ONWARD CHAIN
- Stylish & Modern decor throughout - Family bathroom & En Suites
- Fully fitted security alarm system
- Located in a highly sought after area of Moorgate
- Well placed to amenities/colleges/motorway links/ Rotherham Hospital

Tenure: Freehold EPC Rating: B  
Council Tax Band: F



Please note the marker reflects the  
postcode not the actual property

[view this property online](https://www.williamhbrown.co.uk/Property/RTF115032) [williamhbrown.co.uk/Property/RTF115032](https://www.williamhbrown.co.uk/Property/RTF115032)



Property Ref:  
RTF115032 - 0006

1. MONEY LAUNDERING REGULATIONS Intending purchasers will be asked to produce identification documentation at a later stage and we would ask for your co-operation in order that there is no delay in agreeing the sale. 2. These particulars do not constitute part or all of an offer or contract. 3. The measurements indicated are supplied for guidance only and as such must be considered incorrect. Potential buyers are advised to recheck measurements before committing to any expense. 4. We have not tested any apparatus, equipment, fixtures or services and it is in the buyers interest to check the working condition of any appliances. 5. Where an EPC, or a Home Report (Scotland only) is held for this property, it is available for inspection at the branch by appointment. If you require a printed version of a Home Report, you will need to pay a reasonable production charge reflecting printing and other costs. 6. We are not able to offer an opinion either written or verbal on the content of these reports and this must be obtained from your legal representative. 7. Whilst we take care in preparing these reports, a buyer should ensure that his/her legal representative confirms as soon as possible all matters relating to title including the extent and boundaries of the property and other important matters before exchange of contracts.

William H Brown is a trading name of Sequence (UK) Limited which is registered in England and Wales under company number 4268443, Registered Office is Cumbria House, 16-20 Hockliffe Street, Leighton Buzzard, Bedfordshire, LU7 1GN. VAT Registration Number is 500 2481 05.



william h brown



01709 829935



[rotherham@williamhbrown.co.uk](mailto:rotherham@williamhbrown.co.uk)



32 Mansfield Road, ROTHERHAM, South  
Yorkshire, S60 2DR



[williamhbrown.co.uk](https://www.williamhbrown.co.uk)