

Winterpit Close, Mannings Heath

Guide Price £725,000

🛏️ 4 🚗 2 🚗 3



An impressive Detached Family Home set on a generous Corner Plot, boasting Three Separate Reception Rooms, exciting Potential To Improve, Large Wrap Around Garden and a Triple Garage.

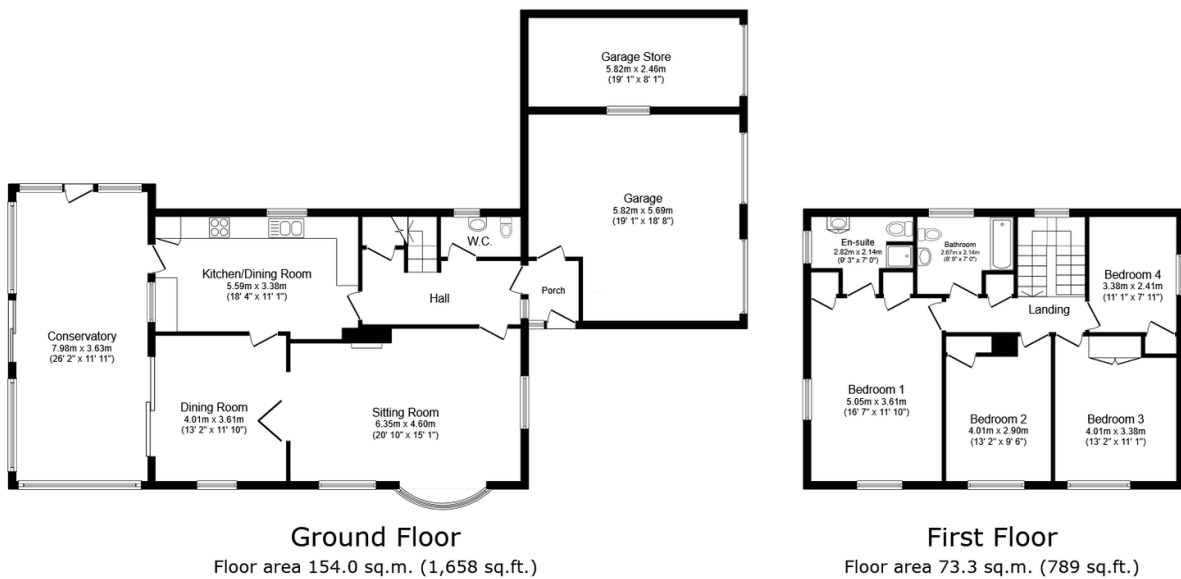
Tenure: Freehold

Council Tax: Band G

EPC Rating: Current D - Potential C.

Key Features

- Watch Our Video Tour
- Substantial Corner Plot
- 18ft Kitchen/Dining Room
- Triple Garage
- Excellent Potential to Extend (stpp)
- Detached Family Home
- Four Generous Bedrooms
- Large Wrap Around Gardens
- Over 2000 Sq Ft of Accommodation
- Popular Village Location



Total floor area: 227.3 sq.m. (2,446 sq.ft.)

This floor plan is for illustrative purposes only. It is not drawn to scale. Any measurements, floor areas (including any total floor area), openings and orientations are approximate. No details are guaranteed, they cannot be relied upon for any purpose and do not form any part of any agreement. No liability is taken for any error, omission or misstatement. A party must rely upon its own inspection(s). Powered by www.Propertybox.io