



Egerton House  
59 Belgrave Road, SW1V

CHESTERTONS





A 3 bedroom situated within the heart of Pimlico, this well-proportioned three-bedroom apartment offers an excellent opportunity for both homeowners and investors alike. The property benefits from Secure access, lift and allocated off road parking. No onward chain.

The property features a bright and spacious reception room, ideal for relaxing or entertaining, alongside a separate, fully fitted kitchen with ample storage and worktop space. All three bedrooms are generously sized, providing flexibility for family living, guest accommodation, or a home office. A family bathroom completes the layout with plenty of built-in storage throughout the property.

Residents of Egerton House benefit from secure entry and a well-maintained building, all set within a prime central London location. Pimlico's charming streets, local cafés, and boutique shops are just moments away, while excellent transport links—including Pimlico Underground Station (Victoria Line) and nearby Victoria Station—offer easy access across the city.

- Three well-sized bedrooms and a Bright reception room
- Allocated Off Road Parking
- Separate fitted kitchen
- No onward Chain
- Prime Pimlico location
- Excellent transport connections

Asking Price £750,000

**Tenure:** Leasehold 164 years 10 months

**Service Charge:** £5040 (Including £984 Sinking Fund)

**Ground Rent:** £400 Per Annum

**Local Authority:** Westminster

**Council Tax Band:** E

*Chestertons Westminster & Pimlico Sales*

105 Wilton Road

London

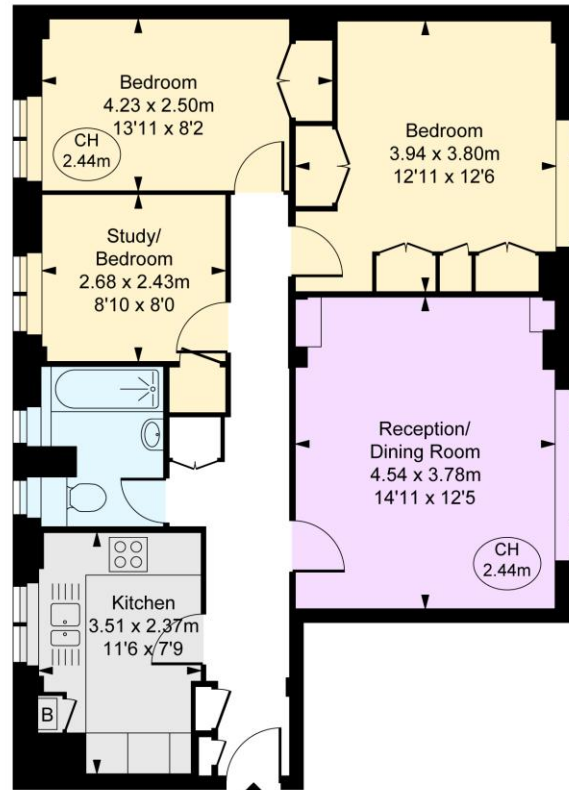
SW1V 1DZ

westminster@chestertons.co.uk

020 3040 8201

chestertons.co.uk

Egerton House,  
 Belgrave Road, SW1V  
 Approximate Gross Internal Area  
 72.60 sq m / 781 sq ft  
 ( CH = Ceiling Heights )



Third Floor



This plan is not to a given scale. A detailed layout plan to scale for application is available on request. All measurements and areas are within 1% tolerance and have been prepared in accordance with industry standards as defined in the RICS Code of Measuring Practice.  
 © Fulham Performance

Chesterton UK Services Limited trading as Chestertons for themselves and for the vendor of this property whose agents they are, give notice that (i) these particulars do not constitute any part of an offer or contract, (ii) all statements contained within these particulars are made without responsibility on the part of Chestertons or the vendor, (iii) whilst made in good faith, none of the statements contained within these particulars are to be relied upon as a statement or representation of fact, (iv) any intending purchasers must satisfy themselves by inspection or otherwise as to the correctness of each of the statements contained within these particulars, (v) the vendor does not make or give either Chestertons or any person in their employment any authority to make or give representation or warranty whatsoever in relation to this property. Wide angle lenses may be used. ©Copyright Chestertons | Chesterton UK Services Limited | Registered Office 5th Floor, The Lantern, 75 Hampstead Road, London, NW1 2PL Registered Company Number 05334580.



This paper is  
 100% recyclable