



 paulwallace

Ottawa Court, Turnford, EN10 6FL |  
£257,500 | Leasehold

## Ottawa Court, Turnford, EN10 6FL

This beautifully presented TWO BEDROOM second floor flat in the heart of sought after Turnford in the popular Canada Fields development benefits from a SPACIOUS LOUNGE/DINER opening to kitchen, family bathroom and two good sized bedrooms with additional storage cupboard in the hallway. With double glazed windows, electric heating, allocated parking space and is ideally situated for the local schools, the A10 and the m25.

### Key features

- Two Bedrooms
- Beautifully Presented
- 102 Year Lease
- Separate Kitchen
- Second Floor
- Allocated Parking
- Spacious Lounge/Diner
- Double Glazed Windows

### Property Information

Tenure  
Leasehold

Council Tax  
C

EPC Rating  
B

Local Authority  
Broxbourne Borough Council

Lease Length  
102 Years

Service Charge & Ground Rent  
£1761 per year - £150 per year




**Paul Wallace Estate Agents**  
Brookfield Centre  
Cheshunt  
Hertfordshire  
EN8 0NN

 01992 781100

 cheshunt@paulwallace.co.uk

 www.paulwallace.co.uk

 Opening Times

Mon - Fri	9 am to 6:30 pm
Sat	9 am to 5:30 pm
Sun	Closed
Bank Hols	Closed

 paulwallace  
estate agents

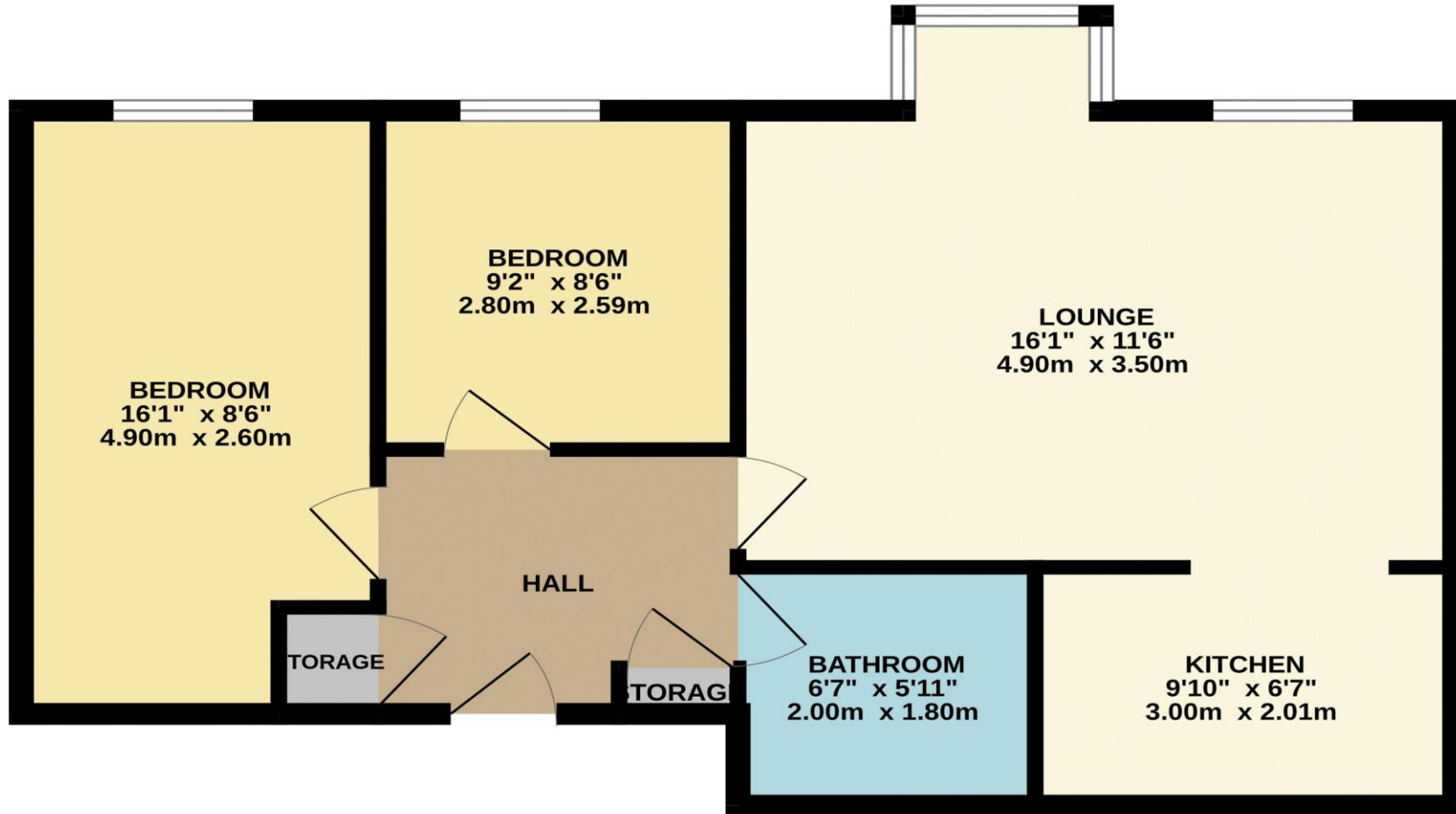
Cheshunt's leading estate agent.  
Please get in touch for your free  
property valuation.







SECOND FLOOR  
607 sq.ft. (56.4 sq.m.) approx.



TOTAL FLOOR AREA : 607 sq.ft. (56.4 sq.m.) approx.

Whilst every attempt has been made to ensure the accuracy of the floorplan contained here, measurements of doors, windows, rooms and any other items are approximate and no responsibility is taken for any error, omission or mis-statement. This plan is for illustrative purposes only and should be used as such by any prospective purchaser. The services, systems and appliances shown have not been tested and no guarantee as to their operability or efficiency can be given.  
Made with Metropix ©2026