



# Pembroke Gardens

London, W8

£6,300 per month  
(£1,453.85 per week)

A peaceful and secure residential cul-de-sac, this charming three-bedroom home provides an ideal haven for families or couples looking for both comfort and convenience.

**CHESTERTONS**



# Pembroke Gardens

London, W8

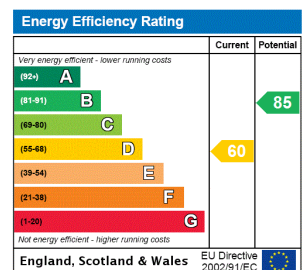
- Three bedrooms
- Newly refurbished
- Wooden floors
- Garden



Nestled in a peaceful and secure residential cul-de-sac, this charming three-bedroom home provides an ideal haven for families or couples looking for both comfort and convenience. The property boasts a spacious open-plan living area, a sleek modern kitchen, and three large double bedrooms, offering plenty of room for relaxation and social gatherings.

Situated on Pembroke Gardens Close, just south of Edwardes Square, the house is within easy reach of the lively shops, restaurants, and transport links of Kensington High Street. Additionally, the beautiful green spaces of Holland Park are nearby, offering a tranquil retreat in one of London's most sought-after locations.

**Minimum Term:** 6 months  
**Deposit Required:** £8,723.08  
**Local Authority:** Kensington and Chelsea  
**Council Tax Band:** H  
**EPC Rating:** D  
**Unfurnished**



### Chestertons Kensington Lettings

116 Kensington High Street  
 Kensington  
 London  
 W8 7RW  
 kensingtonlettingsusers@chestertons.co.uk  
 02079377260  
 chestertons.co.uk

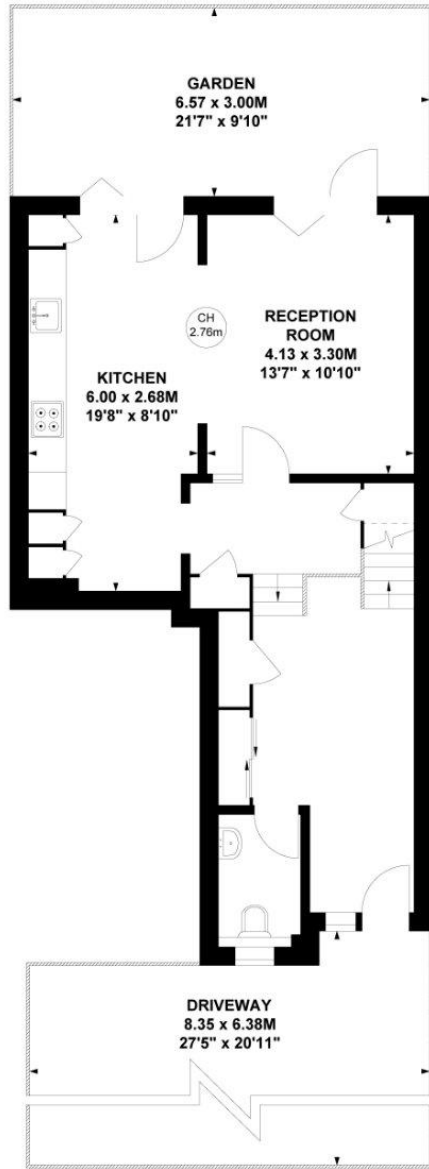
Additional tenant charges apply (fees apply to non-AST tenancies only)  
 Tenancy Agreement Fee: £300  
 References per Tenant/Guarantor: £60  
 Inventory check (approx. £100 – £250 inc. VAT)  
[chestertons.co.uk/property-to-rent/applicable-fees](http://chestertons.co.uk/property-to-rent/applicable-fees)

# Pembroke Gardens, W8

Approximate gross internal area

123.55 sq m / 1330 sq ft

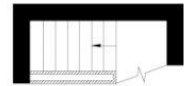
Key :  
CH - Ceiling Height



**Ground Floor**



**First Floor**



**First Floor  
Half Landing**

Not to scale, for guidance only and must not be relied upon as a statement of fact.  
All measurements and areas are approximate only

