



St. Johns Road, TW7

£340,000

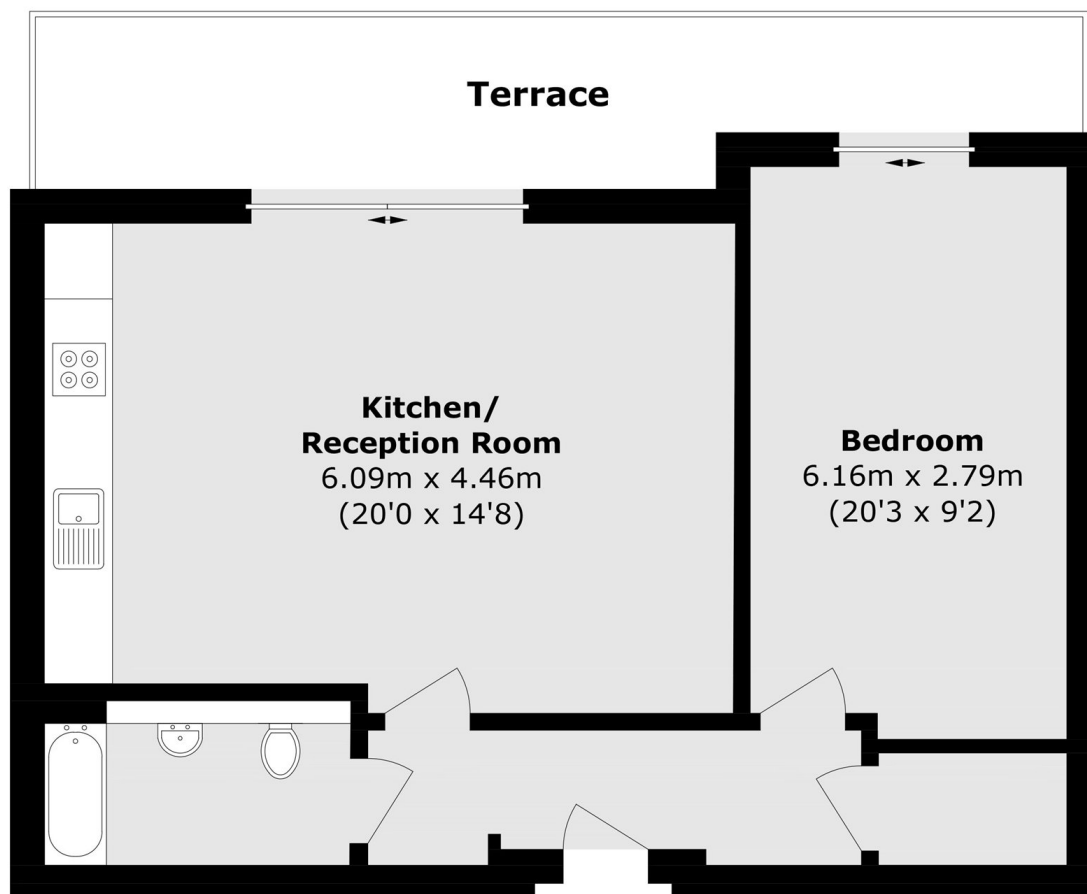
A one double bedroom penthouse apartment, with the bonus of a large wrap around terrace balcony. Further benefits include communal gardens, long lease and low service charges and no onward chain.

Wotton House is superbly positioned in the heart of Isleworth close to Isleworth Train Station, local parks and amenities. St Margarets and Richmond are a pleasant walk away or short bus journey.

Features

- Large Private Balcony
- No Chain
- Lift Serviced
- Close To Train Station
- Close To Amenities
- Perfect Condition

St. Johns Road, Isleworth, TW7



Total area (approx.): 52.1 sq. m (560.8 sq. ft)

Terrace Total (approx.): 12.4 sq. m (133.4 sq. ft)