



## Reedworth Street, SE11

£2,200 Per calendar month

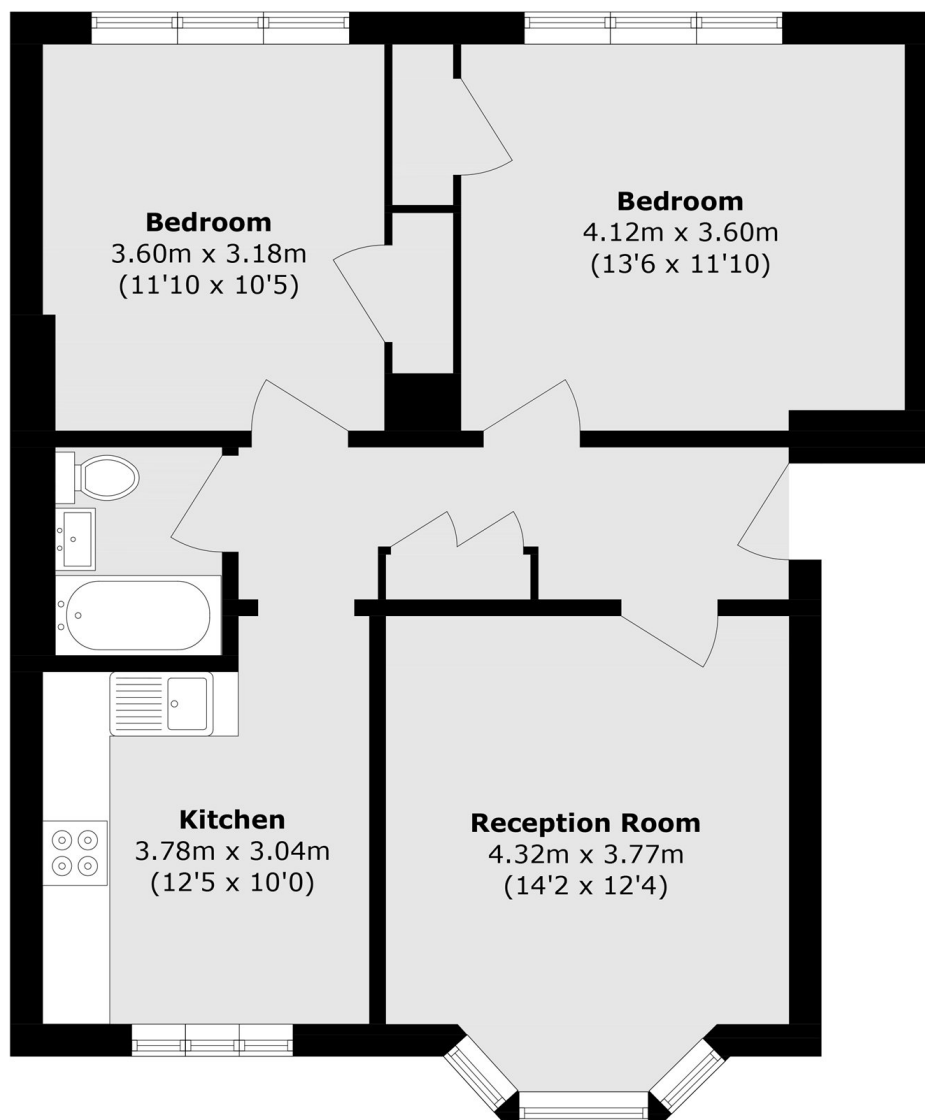
A spacious two bedroom apartment located on a quiet residential street in the heart of Kennington. The property benefits from two equal sized bedrooms with ample space for storage and desks, one bathroom, a spacious reception with a separate kitchen.

Reedworth Street is just a short walk from Kennington's charming high street, offering a variety of independent cafés, popular pubs and restaurants. It's ideally positioned close to Kennington Underground Station (Northern Line) and is moments from the open green spaces of Kennington Park.

### Features

- Two Double Bedroom
- One Bathroom
- Wood Flooring
- Double Glazing
- Great Location
- Quiet Residential Street

# Reedworth Street, London, SE11



Total area (approx.): 68.5 sq. m (737.3 sq. ft)