

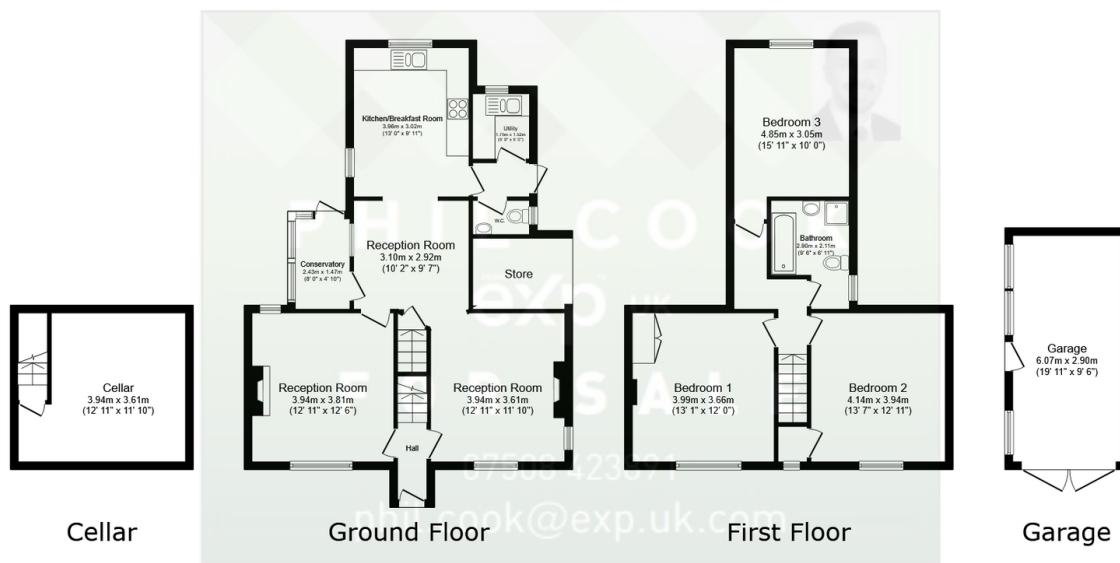
59 Bewdley Road North, Stourport.

Guide Price £325,000

3 1 2



- Quote PC0649 Agent - Phil Cook
- Three Double Bedrooms, Potential to Split Rear Bedroom to Use as Four Bedrooms.
- Cellar, Conservatory, Utility room and Downstairs W.C.
- Amazing Large Level Rear Garden
- Superb Period Family home in a Popular area to the Bewdley side of Stourport
- Three Large Reception Rooms and a Spacious Kitchen
- Large Driveway Leading through Side Gates to Garage and Garden
- Detached Garage with Vehicle Access the Side
- Early Viewing Advised to Avoid Disappointment Click 'CONTACT' or Email Agent to book a viewing now.



Total floor area: 163.3 sq.m. (1,758 sq.ft.)

This floor plan is for illustrative purposes only. It is not drawn to scale. Any measurements, floor areas (including any total floor area), openings and orientations are approximate. No details are guaranteed, they cannot be relied upon for any purpose and do not form any part of any agreement. No liability is taken for any error, omission or misstatement. A party must rely upon its own inspection(s). Powered by www.Propertybox.io

Quote Reference PC0649. Click 'CONTACT' to book a viewing now. A three bedroom semi-detached period family home located to the Bewdley side of Stourport close to all local amenities. For Sale by the Modern Method of Auction. Potential to re-configure the layout and re-fit to create a stunning large family home. Property comprises of a large kitchen/dining room, two further reception rooms, downstairs W.C. utility room to the ground floor, three large bedrooms, plus a family bathroom to the first floor. Very large private garden to the rear with mature planting, driveway and gates to the side leading to a detached garage. Superb

PHIL COOK



@ phil.cook@exp.uk.com

🌐 philcook.exp.uk.com

📞 07508 423 891

opportunity to buy a large family property with period charm in this location. No Upward Chain.
Hit the 'Request Details' or 'Email Agent' button to secure your viewing now!