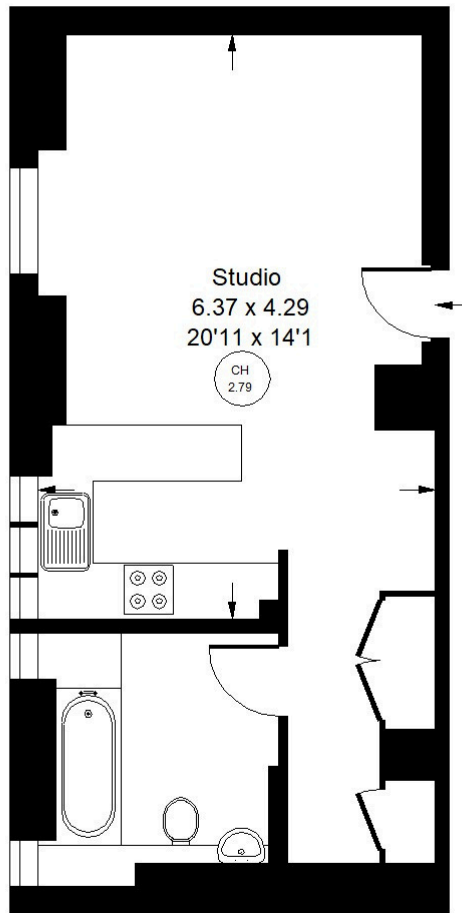




CHATSWORTH
COURT
COURTYARD

PEMBROKE ROAD, W8

Approx. Gross Internal Area
= 39.2 sq m / 422 sq ft



Lower Ground Floor



Pembroke Road, W8 - Share of Freehold

Local Authority - Royal Borough of Kensington & Chelsea

This generous studio apartment located in a quiet west-facing position in this well regarded building which benefits from 24-hour portage and access to communal gardens. The open-plan living area includes the kitchen and built-in storage cupboards, there is a spacious bathroom and good ceiling height. Chatsworth Court is a popular building located to the south of Kensington High Street, close to Holland Park. Earls Court underground station and the numerous shopping and transport facilities of Kensington High Street are within walking distance.

- 24 Hour Porter and Lift
- Communal Gardens
- Quiet Location
- Chain Free
- EPC Rating: D
- Council Tax Band: C



Whilst every attempt has been made to ensure the accuracy of the floor plan, measurements are approximate and not to scale. No guarantee is given on the total square footage of the property quoted on the plan. Figures given are for guidance. Plan is for illustration purposes only, not to be used for valuations.