



Green Walk, SE1

£575,000

An exceptional modern apartment, featuring high ceilings, floor to ceiling windows, air-conditioning, far-reaching views and a premium finish throughout. The large open-plan living and kitchen area offers a stylish and versatile space, complemented by a generous double bedroom and a sleek three-piece bathroom, whilst the particular stand-out feature is a huge private roof terrace.

The Jam Factory is ideally located, close to London Bridge station, along with the vibrant cafés, delis, shops, and restaurants of Bermondsey Street. This sought-after neighbourhood blends historic charm with a lively food and arts scene, placing Borough Market, Maltby Street Market, and the South Bank all within easy reach.

Features

- Private Roof Terrace
- Penthouse Level Apartment
- Air-conditioning
- Fantastic Skyline Views
- Large Open Plan Living Space
- Floor to ceiling windows
- Chain Free Sale



Green Walk, SE1

Occupying a penthouse level position, this exceptional modern apartment is defined by its remarkable private roof terrace, a truly standout feature offering expansive outdoor space and far-reaching panoramic views, ideal for entertaining, relaxing, or simply enjoying the London skyline.

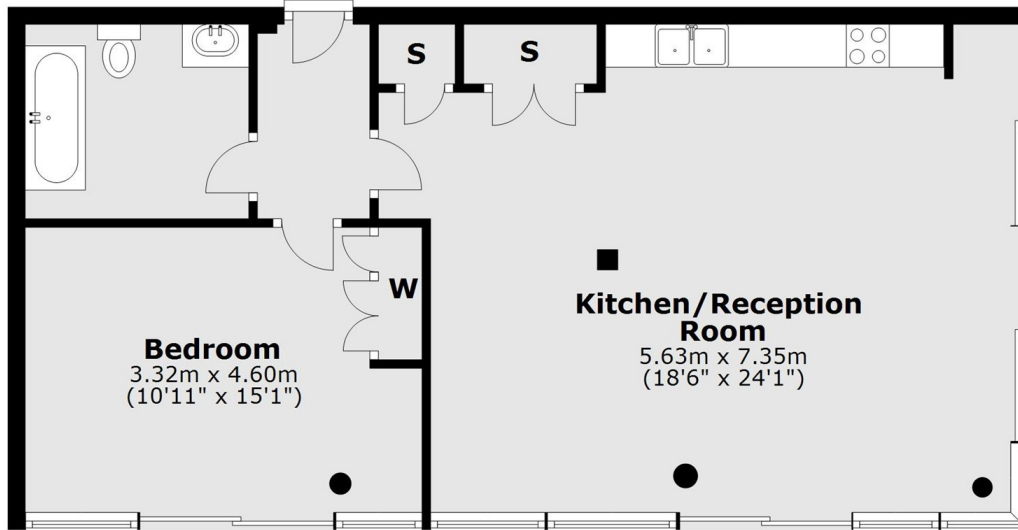
The interior is finished to a high standard throughout, with elegant hardwood flooring, air-conditioning, and a light-filled dual-aspect layout. Floor-to-ceiling windows and two Juliet balconies enhance the sense of openness, drawing in natural light and creating a strong connection between inside and out.

The accommodation comprises a generous double bedroom and a sleek three-piece bathroom, all set within a refined and contemporary design. A spacious open-plan living and kitchen area completes the home, offering a stylish and versatile setting for everyday living, while residents also benefit from the added convenience of a concierge service.

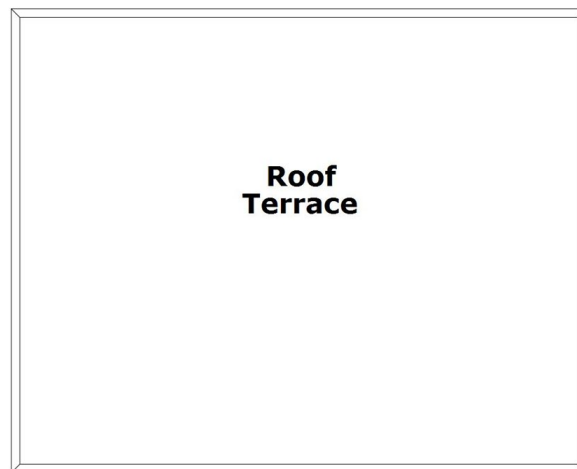


Green Walk,
London, SE1

Sixth Floor



Seventh Floor



Main area: Approx. 65.1 sq. metres (700.7 sq. feet)
Plus roof terrace, approx. 33.8 sq. metres (363.8 sq. feet)