



# THE OLD CHAPEL

LANGFORD, OXFORDSHIRE

A unique and beautifully presented, period stone one-bedroom Chapel, situated in the heart of the desirable village of Langford

**Ground Floor:** Entrance porch  
Open plan kitchen/ dining/sitting room

**First Floor:** Double bedroom with shower room and dressing area

**Outside:** Courtyard Patio Terrace



**Butler**   
**Sherborn**

**Burford Office**

2 Lower High Street, Burford, Oxfordshire, OX18 4RR

T: 01993 822325

E: [burford@butlersherborn.co.uk](mailto:burford@butlersherborn.co.uk)

[www.butlersherborn.co.uk](http://www.butlersherborn.co.uk)

## DESCRIPTION

Dating from the 19th century and tucked away on a peaceful village lane, The Old Chapel beautifully combines historic character with exceptional contemporary design. Original features, including a magnificent full-height reception space and striking arched windows, fill the home with natural light. Extensively renovated to an impeccable standard throughout, it presents a superb opportunity as a luxury holiday retreat, investment property, or an elegant village escape.

Outside a delightful south-west-facing courtyard offers a private outdoor retreat, perfectly positioned to enjoy the warmth of the afternoon and evening sun.

## SERVICES

Mains water and electricity. Electric central heating. Private drainage, Fibre broadband available in the village. No tests to the suitability of services have been carried out and intending purchasers should commission their own tests (if required).

## WAYLEAVES, EASEMENTS & RIGHTS OF WAY

The property is being sold subject to and with the benefit of all rights including; rights of way, whether public or private, light, support, drainage, water and electricity supplies and other rights and obligations, easements and quasi-easements and restrictive covenants and all existing and proposed wayleaves for masts, pylons, stays, cables, drains, water and gas and other pipes whether referred to in these particulars or not.



## TENURE

Freehold

## FIXTURES & FITTINGS

Only those items mentioned in these particulars are included in the sale. Some additional items may be available by separate negotiation.

## LOCAL AUTHORITY

West Oxfordshire District Council,  
Church Green, Witney, Oxfordshire

T: 01993 861000 | W: [westoxon.gov.uk](http://westoxon.gov.uk)

## COUNCIL TAX

Band C

## VIEWINGS

Please telephone Butler Sherborn, Burford Office -  
T: 01993 822325 | E: [burford@butlersherborn.co.uk](mailto:burford@butlersherborn.co.uk)

## DIRECTIONS (GL7 3LF)

From Burford take the A361 towards Lechlade. After approximately 5 miles take a left turn into Filkins. Follow the road to the right and take the next turning right signposted to Langford. Continue into the village and before The Bell Inn on the right, turn right into Chapel Street, the chapel can be found on your left-hand side. Parking is on street in the village.

**what3words:** ///conducted.avid.magnitude



### Pubs

Double Red Duke - 4 miles  
 The Bell, Langford - within walking distance  
 Five Alls, Filkins - 1.4 miles



### Schools

St Christopher's C of E School - within walking distance  
 St Hugh's School - 9.4 miles  
 Hatherop Castle - 7.4 miles  
 Burford School - 6.8 miles



### Train station

Swindon - 15 miles  
 Oxford - 25.7 miles



### Members Clubs

Thyme, Southrop - 4.2 miles  
 Daylesford Farmhouse - 20.3 miles  
 Estelle Manor - 19.7 miles

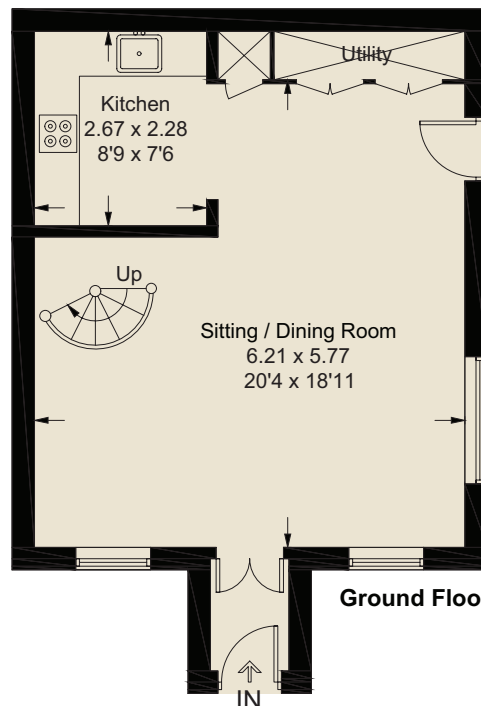
**Butler**   
**Sherborn**

[www.butlersherborn.co.uk](http://www.butlersherborn.co.uk)

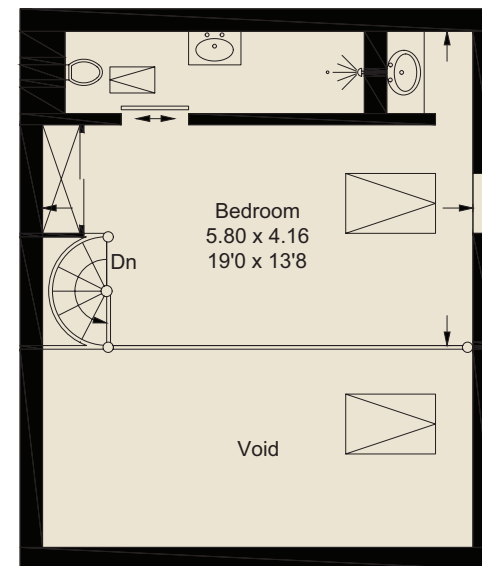
## The Old Chapel

Approximate Gross Internal Area = 65.8 sq m / 708 sq ft  
 (Excluding Void)

Illustration for identification purposes only, measurements are approximate, not to scale. Fourlabs.co © (ID1312809)



Ground Floor



First Floor

**Disclaimer** 1. These particulars, including any plan, are a general guide only and do not form any part of any offer or contract. All descriptions, including photographs, dimensions and other details are given in good faith but do not amount to a representation or warranty. They should not be relied upon as statements of fact and anyone interested must satisfy themselves as to their correctness by inspection or otherwise. 2. Neither Butler Sherborn LLP, nor the seller, accepts responsibility for any error that these particulars may contain however caused. Neither the partners, nor any employees of Butler Sherborn LLP have any authority to make any representation or warranty whatsoever in relation to this property. 3. Any plan is for layout guidance only and is not drawn to scale. All dimensions, shapes and compass bearings are approximate, and you should not rely upon them without checking them first. 4. Please discuss with us any aspects which are particularly important to you before travelling to view this property. 5. Please note that in line with Money Laundering Regulations potential purchasers will be required to provide proof of identification documents no later than when a purchaser's offer is informally accepted by the seller. 6. Butler Sherborn LLP uses the title partner for a member who is an equity partner, fixed share partner or senior employee. Photographs taken: June 2026. Particulars written: June 2026. Brochure by wordperfectprint.com

