



Hampton Road, TW11

£1,700 PCM

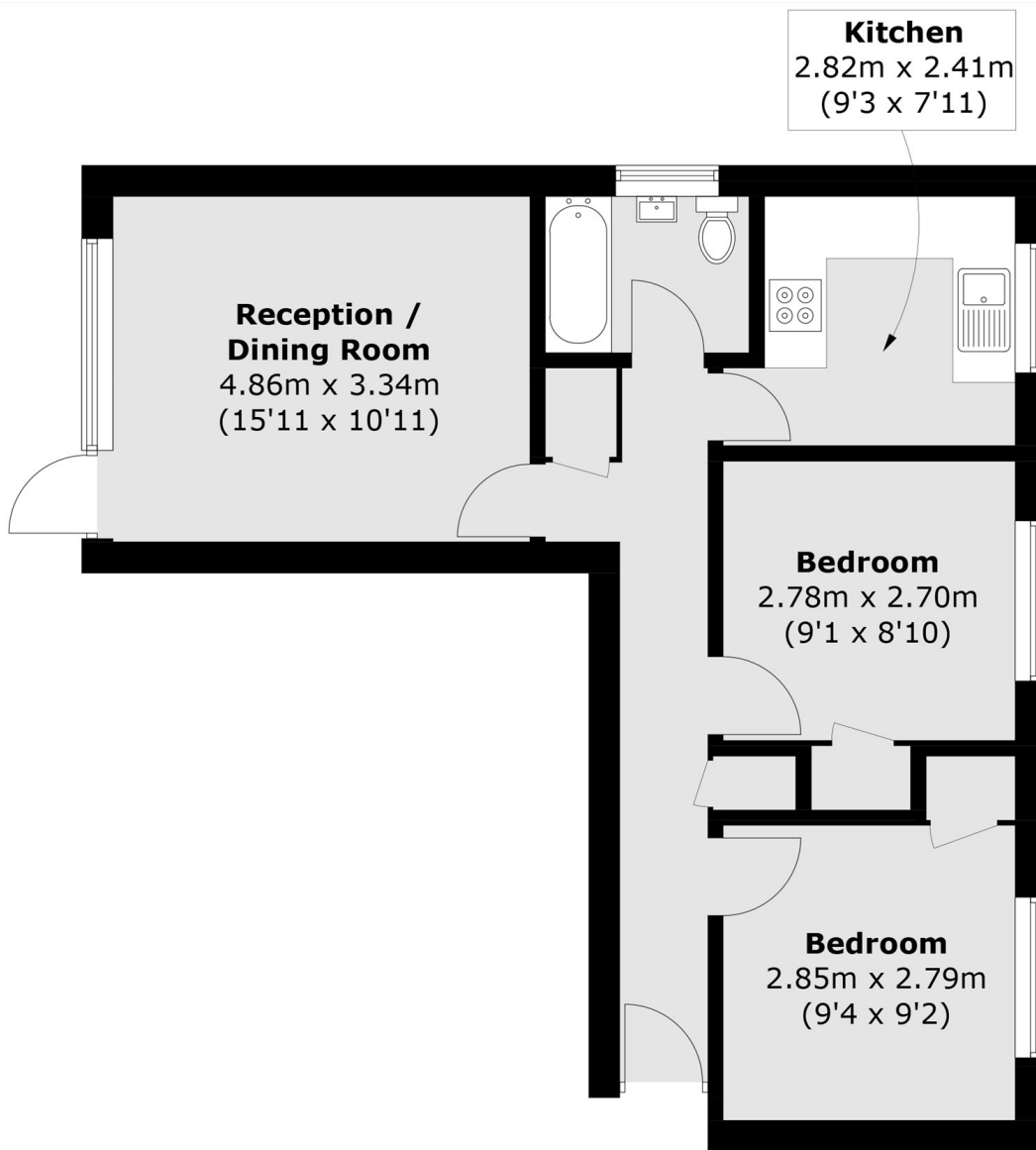
A two double bedroom ground floor apartment with a bright and spacious living room with patio doors on to the communal garden.

Charles Court is in central Teddington, moments from Broad street's shops and restaurants with easy access to Bushy Park and Teddington Train Station.

- Two Double Bedrooms • Spacious Living Room • Built In Storage •
- Central Teddington • Close To Bushy Park • Separate Kitchen •

SNELLERS

ESTATE AGENTS



Ground Floor

Total area (approx.): 50.1 sq. m (539.2 sq. ft)

Snellers Teddington Lettings
74 Broad Street
Teddington
TW11 8QX
020 8614 6140
teddingtonlettings@snellers.co.uk

Energy Rating: E We aim to make our particulars both accurate and reliable. However they are not guaranteed; nor do they form part of an offer or contract. If you require clarification on any points then please contact us, especially if you're traveling some distance to view. Please note that appliances and heating systems have not been tested and therefore no warranties can be given as to their good working order