



Dover House Road, SW15

£450,000

This stunning ground floor garden flat that was built in the 1920s. Offered with a low service charges and council tax, the flat is ideal for a first time buyer.

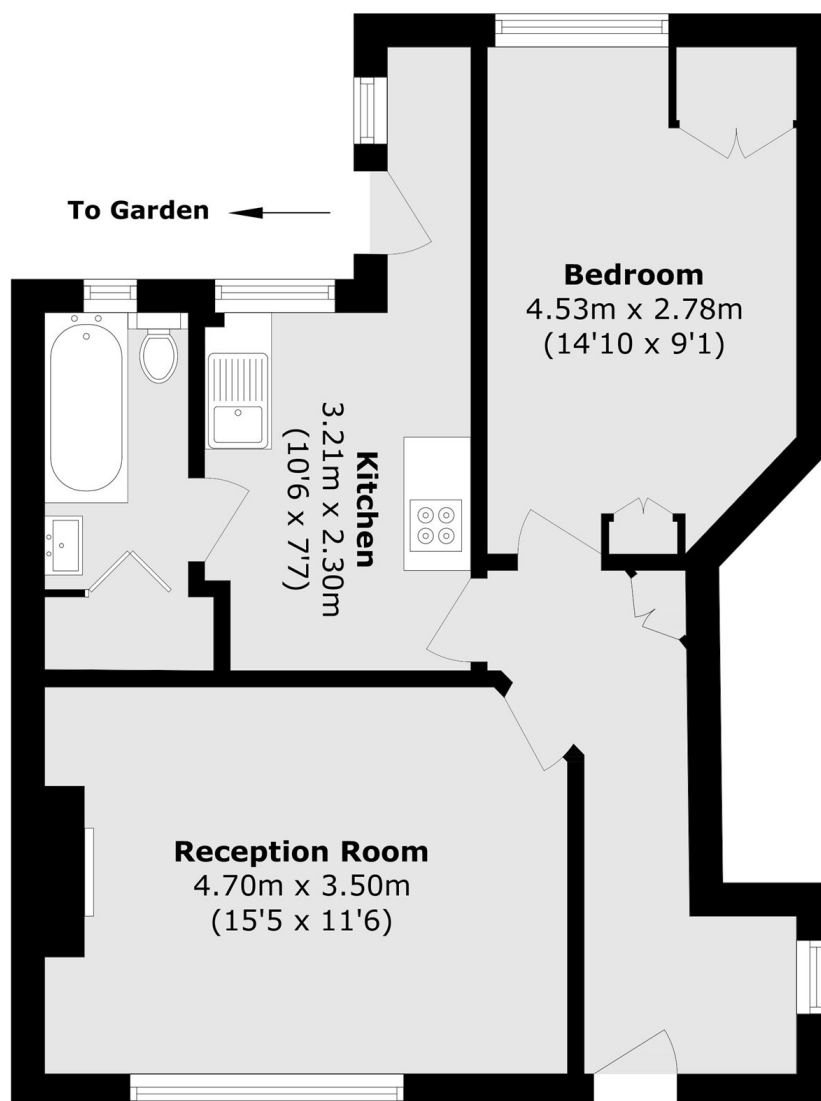
The property is also offered to the market chain free with a Share of the Freehold

Dover House Road is part of the Dover House Estate which was created in the 1920s for the benefit of soldiers returning from WW1. The 430 bus (to South Kensington via Putney, Fulham & West Brompton) stops on the road & Barnes station is only 0.3 miles away (7 minute walk according to Google).

Features

- Chain Free
- One Bedroom
- 552 Sq.Ft
- Private Garden
- 1920s Build
- Share of Freehold

Dover House Road, London, SW15



Total area (approx.): 51.3 sq. m (552.1 sq. ft)