



strakers

📍 107 Pickwick Road, Corsham, Wiltshire, SN13 9DA

In branch | Online | On the move  
strakers.co.uk

📍 107 Pickwick Road, Corsham, Wiltshire, SN13 9DA

🏠 Guide Price £250,000

A beautifully presented two-bedroom semi-detached bungalow having been renovated throughout to a high standard, being only a short level walking distance of The High Street. Whether you're a first-time buyer or downsizer alike, it is a must-see.

- Newly Refurbished to a High Standard Throughout
- Short Level Walking Distance to The High Street
- Semi Detached Bungalow
- Two Generous Sized Bedrooms
- Newly Fitted Modern Fully Fitted Kitchen
- Newly Fitted White Shower Room
- Electric heating & Double Glazed Throughout
- Beautifully Landscaped Gardens to Front & Rear
- No Onward Chain Early Viewing Strongly Advised

🏠 Freehold

🏠 EPC Rating D



Upon entering, you are greeted by a bright entrance hall, laid with new flooring and freshly decorated in soft neutral tones that immediately give a sense of warmth and modernity. The living room is inviting, with a large front-facing window that floods the space with natural light. The room has been tastefully updated with new flooring, with ample space for both seating and dining arrangements. The kitchen has been completely transformed. Sleek cabinetry and stylish worktops create a contemporary feel, while the layout offers plenty of practicality. From here, there is a door out to the rear lobby with a very handy large utility area that has both power and light, ideal for an extra appliance or valuable storage space, plus a door out to the rear garden. The property has two well-proportioned bedrooms, plus the shower room has been fully renovated to a high standard. It's a clean, bright space designed for comfort and ease. Moving outside the gardens has been a real passion for the owners, who wanted to create a low-maintenance garden that maximises the space, with ample space to enjoy the outdoors. There is a generous-sized lawn to the rear, an ample paved patio, plus well-stocked boards. In short, we are delighted to bring to the market this beautifully presented bungalow in the enviable location, being only a short level walk to The High Street with No Onward Chain

#### **Situation**

Corsham is a pretty and historic town of architectural significance located on the southern fringes of the Cotswolds, an area of outstanding natural beauty and some 8 miles North East of the fine Georgian City of Bath. The town, noted for its fine High Street, has a wealth of beautiful and historic buildings dating from the 16th Century such as the Alms House and the historic Corsham Court with its landscaped open parkland. The town caters for most day to day needs with a range of national and bespoke shops, coffee houses, boutiques, restaurants and a variety of public houses. There are very good Primary and Secondary schools and the new Corsham Leisure Centre. Communications are excellent: Bath, Bristol and Swindon are all within easy motoring distance; there are fast road links to London and the West Country via the M4 motorway (J17 and 18 approximately 15 - 20 minutes away); and main line rail services are available from either Bath or Chippenham to Bristol Temple Meads and London Paddington.

#### **Property Information**

Council Tax Band: B

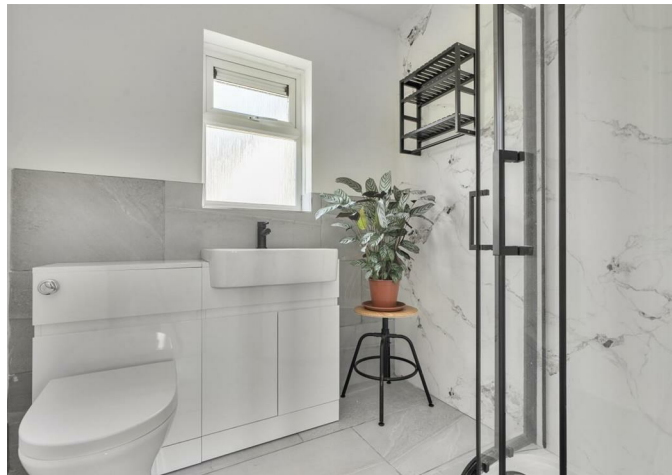
Freehold

Mains Services

E.P.C Rating: D

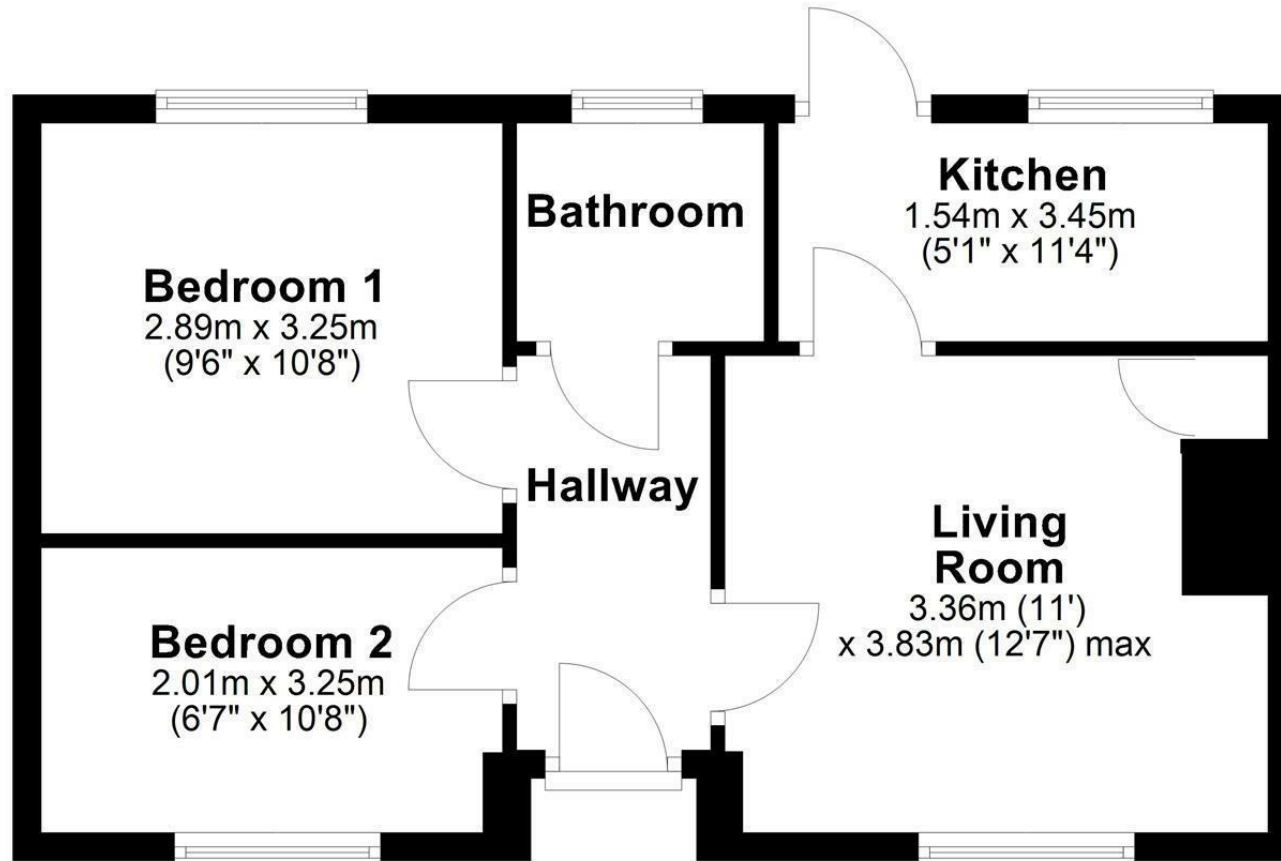
Electric Heating

No Onward Chain



## Ground Floor

Approx. 42.3 sq. metres (455.8 sq. feet)



Total area: approx. 42.3 sq. metres (455.8 sq. feet)

Disclaimer: These particulars, whilst believed to be accurate are set out as a general outline only for guidance and do not constitute any part of an offer or contract. Intending purchasers should not rely on them as statements of representation of fact, but must satisfy themselves by inspection or otherwise as to their accuracy. No person in this firm's employment has the authority to make or give any representation or warranty in respect of the property. All measurements and distances are approximate only. Your home is at risk if you do not keep up repayments on a mortgage or other loan secured on it.