



## Admiralty Avenue, E16

### £325,000

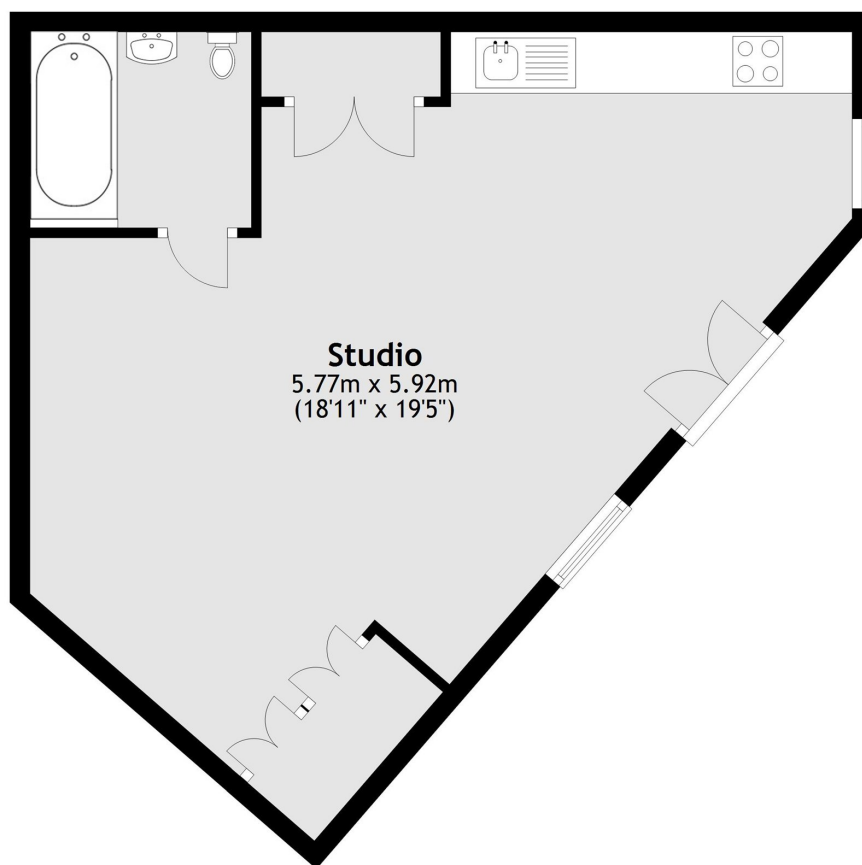
An impressive studio apartment on the fourth floor of this sought after development. This large apartment has wooden flooring, ample storage and access to residents facilities.

Royal Wharf is well located for the water sports, bars, and restaurants of Royal Victoria Docks including the popular China Palace.

### Features

Studio Apartment  
Fourth Floor  
Ample Storage  
Residents Gym  
Concierge

# Admiralty Avenue, London, E16



Total area: approx. 46.4 sq. metres (500.0 sq. feet)