



CLANRICARDE GARDENS, W2

£825,000

Two double bedrooms

High specification

Share of freehold

Two bathrooms

Ground floor

EPC- D

@marshandparsons
marshandparsons.co.uk

MARSH &
PARSONS



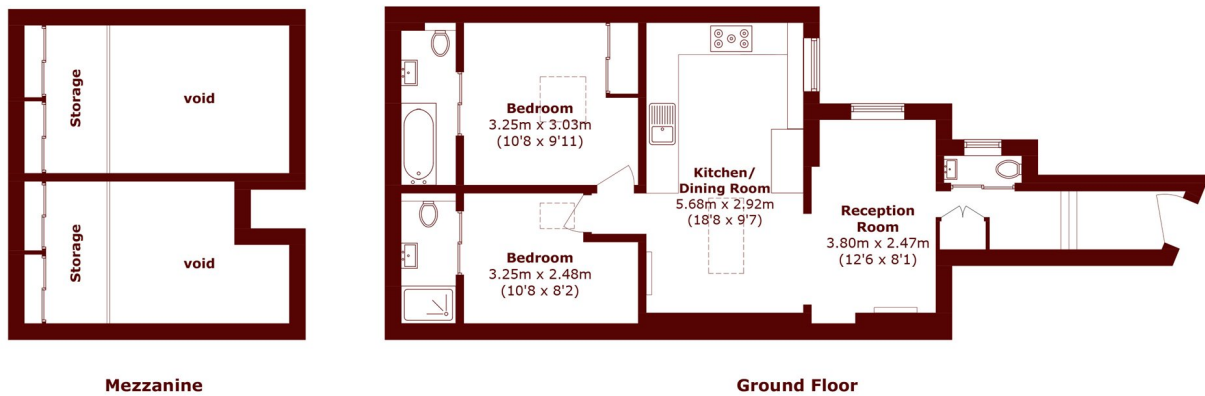
ABOUT THE PROPERTY

A beautifully presented two-bedroom, two-bathroom apartment occupying the raised ground floor of an attractive and well-maintained period building. The property further benefits from a separate guest WC and offers bright accommodation with high ceilings and ample storage space. Combining period charm with modern convenience.

Clanricarde Gardens is a peaceful cul-de-sac tucked away just moments from Notting Hill Gate. Ideally positioned, the property is within easy walking distance of the extensive amenities and excellent transport connections of Notting Hill Gate station, while the open green spaces of Hyde Park and Kensington Gardens are also close by.



STEP INSIDE CLANRICARDE GARDENS



Total area (approx.): 65.9 sq. m (709.3 sq. ft)
(Excluding Void)

Notting Hill
020 7313 2890

Energy Rating: D We aim to make our particulars both accurate and reliable. However, they are not guaranteed; nor do they form part of an offer or contract. If you require clarification on any points then please contact us, especially if you're traveling some distance to view. Please note that appliances and heating systems have not been tested and therefore no warranties can be given as to their good working order

MARSH &
PARSONS