

# COMPASS

Lettings & Sales  
New Homes  
Property Management  
Buy To Let Agents  
Mortgage Advice  
Block Management



## *HERON WAY, DOVERCOURT*



**FOR RENT @ £900pcm    DEPOSIT £1000**

***RECENTLY DECORATED GROUND FLOOR FLAT  
2 BEDROOMS \* LOUNGE \* MODERN KITCHEN  
NEW WOODEN FLOORING \* DOUBLE GLAZING  
OFF STREET PARKING \* CLOSE TO SHOPS \* GAS C/H  
FITTED BLINDS \* AVAILABLE END MARCH***

28 Kingsway  
Dovercourt  
Harwich  
Essex CO12 3AB

(T) 01255 556660

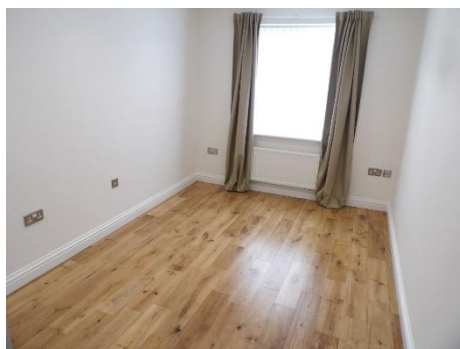
(E) [info@compassproperty.me.uk](mailto:info@compassproperty.me.uk)

(W) [www.compassproperty.me.uk](http://www.compassproperty.me.uk)

## Fulmer House, Heron Way, Dovercourt CO12 3FG...

### Communal entrance door to: -

- Communal Hall** With post box & private entrance door.
- Entrance Hall** Doors to all rooms except kitchen, radiator, new wooden flooring, storage cupboard, entry phone, inset ceiling lights.
- Bedroom 1** **14' x 8'4**. UPVC double glazed window to front, radiator, new wooden flooring, inset ceiling lights.
- Bedroom 2** **8'6 X 8'**. UPVC double glazed window to front, radiator, new wooden flooring, inset ceiling lights.
- Bathroom** Part tiled white suite comprising panelled bath with separate shower above & glazed screen, new vanity wash basin with gloss white cupboard under & mirrored wall cabinet above, close-coupled WC, chrome heated towel radiator, tiled floor, extractor fan, part tiled walls, inset ceiling lights.
- Lounge** **14' (11' min) x 11'4 (9' min)**. UPVC double glazed windows to front & side, 2 radiators, new wooden flooring, inset ceiling lights, open to: -
- Kitchen** **9' x 8'4 (5' min)**. White gloss fitted units comprising eye level cupboards with work surfaces, drawers & cupboards under, built in stainless steel double oven, gas hob & stainless steel chimney style extractor fan hood, stainless steel 1½ bowl sink unit with mixer tap, tiled splash backs, integrated fridge/freezer, dish washer & washing machine, inset ceiling lights, tiled floor, UPVC double glazed window to side.
- Outside** There is 1 allocated car park space to the front.
- Council Tax** Band B: £1,687.76 pa (April 2025 – March 2026).



PHOTOS TAKEN PRIOR TO LATEST TENANCY IN SEPTEMBER 2025