



Ivory Close, Eccles

Manchester



In Excess of £220,000

Ivory Close

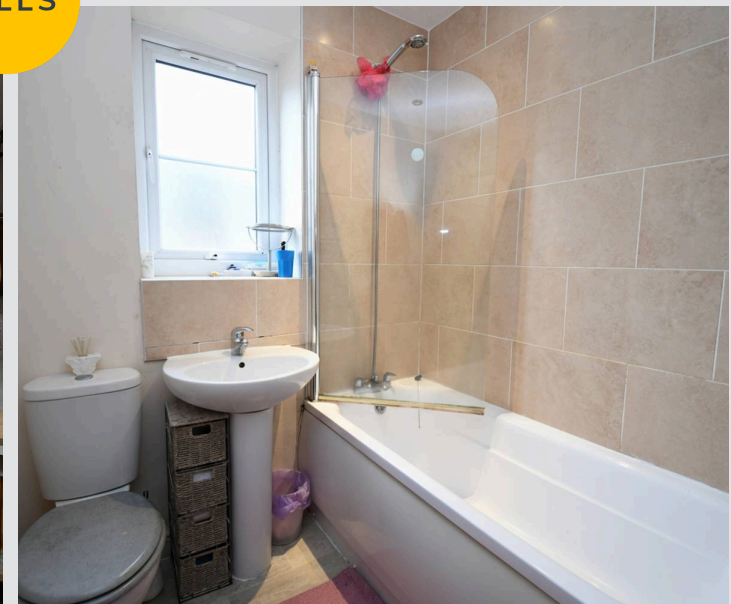
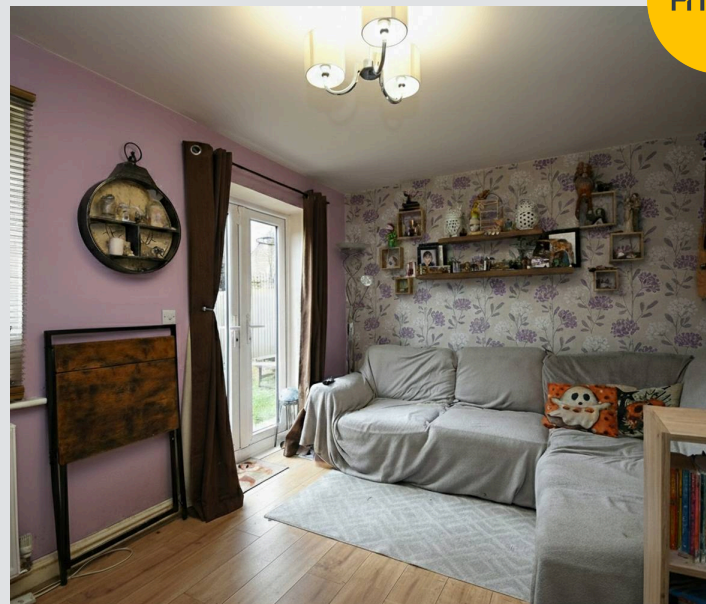
Eccles, Manchester

Spacious three-bed semi in a quiet Peel Green cul de sac. Modern kitchen, large lounge, guest W.C., off-road parking, and a bigger plot. Close to schools, amenities, and transport links.

Council Tax band: B

Tenure: Leasehold

- Tucked Away within a Cul De Sac in the Popular Peel Green Area Occupying a Larger Plot than Most
- Perfect First Time Buy
- Lounge with French Doors over Looking the Rear Garden
- Fitted Modern Kitchen and Dining Space
- Three Generous Bedrooms
- Three Piece Bathroom Suite & Guest W.C.
- Gardens to the Front, Side & Rear along with Off Road Parking for Multiple Cars
- Excellently Surrounded by Amenities & Transport Links



HILLS

Lounge

14' 4" x 9' 7" (4.38m x 2.92m)

Kitchen

16' 1" x 7' 7" (4.90m x 2.31m)

W.C

6' 1" x 2' 5" (1.85m x 0.73m)

Bedroom One

14' 3" x 8' 0" (4.35m x 2.43m)

Bedroom Two

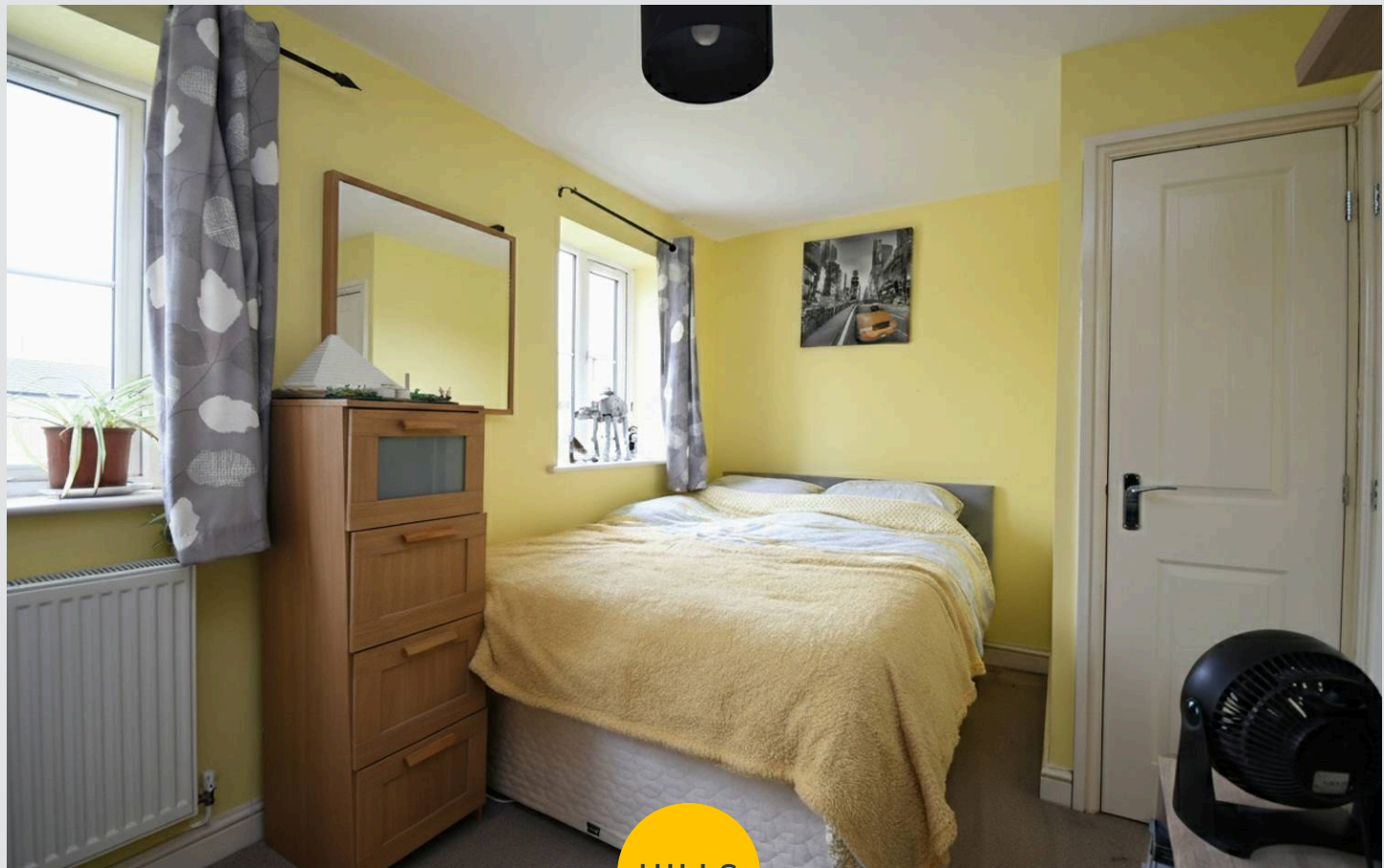
11' 8" x 8' 1" (3.56m x 2.46m)

Bedroom Three

9' 7" x 5' 10" (2.92m x 1.79m)

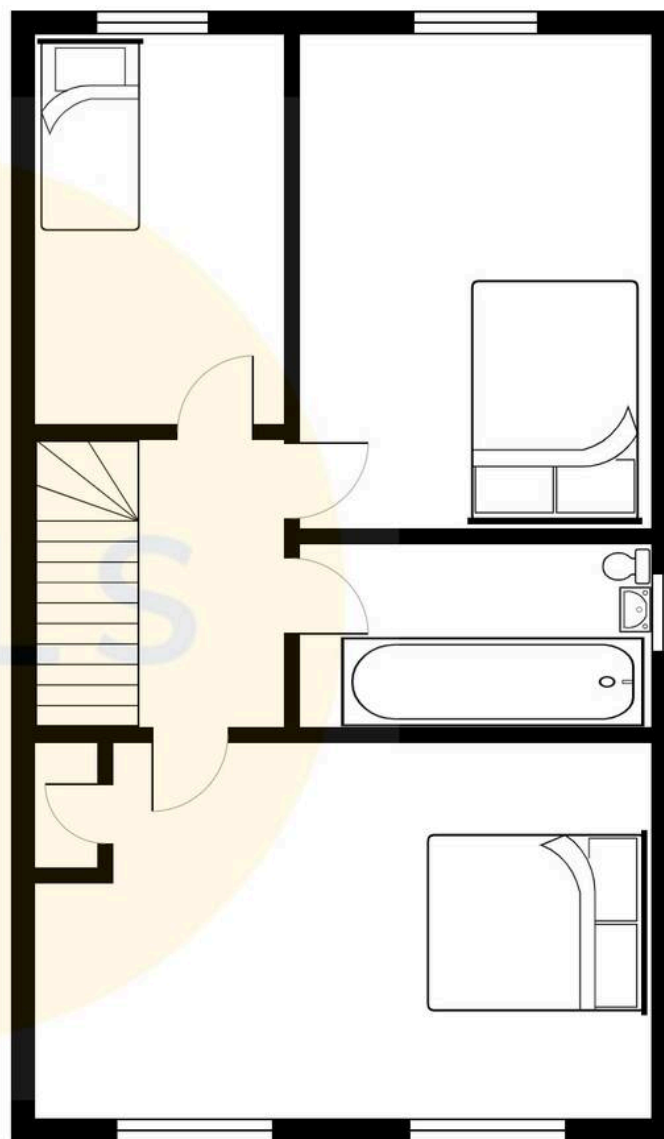
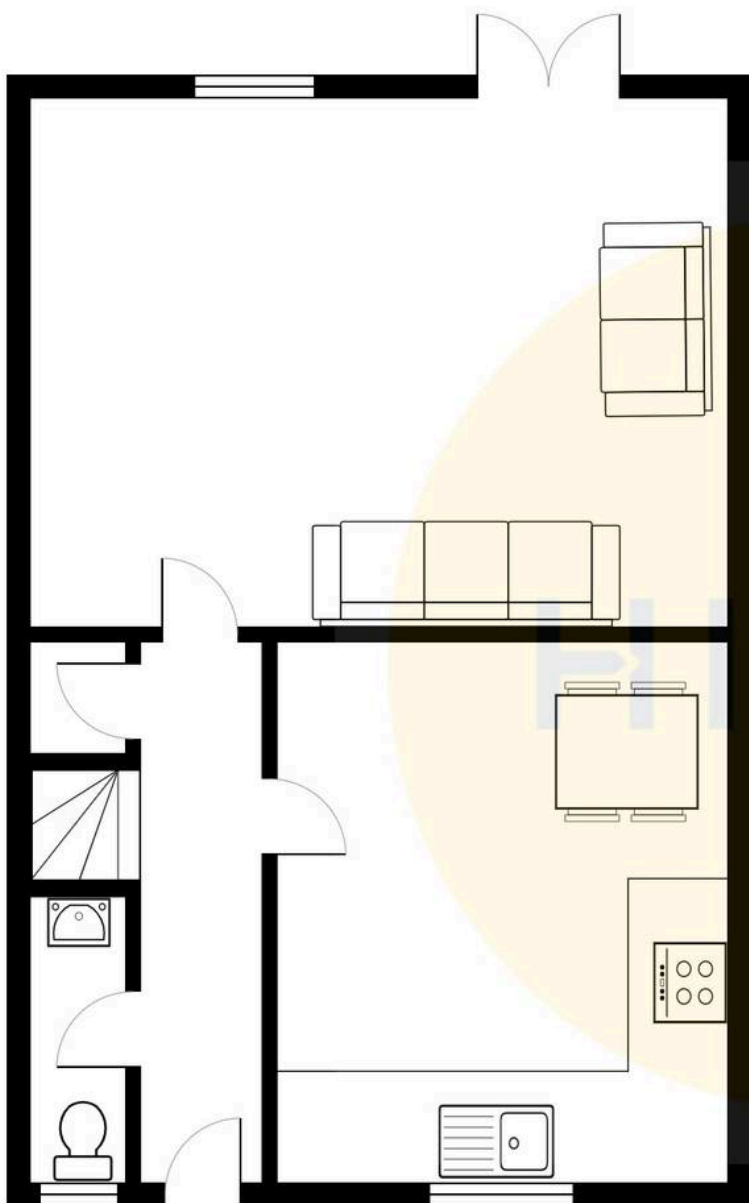
Bathroom

7' 7" x 5' 8" (2.31m x 1.73m)



HILLS







Hills | Salfords Estate Agent

Hills Residential, Sentinel House Albert Street – M30 0SS

0161 707 4900

sales@hills.agency

www.hills.agency/



By law, we are required to conduct anti-money laundering checks on all potential buyers and sellers. In line with HMRC guidelines, our trusted partner, Coadjute, will securely manage these checks on our behalf. A non-refundable fee of £45 + VAT per person will apply, and Coadjute will handle the payment. Once an offer is accepted, Coadjute will send a secure link for you to complete the biometric checks. These checks must be completed before we can send the memorandum of sale to all parties. PLEASE NOTE: The Agent has not tested any equipment, fixtures, fittings or services so cannot verify that they are in working order or fit for the purpose. References to the properties tenure are based on information supplied by the seller. You are advised to check the availability of this property before travelling any distance to view. Every effort has been made to ensure these particulars are correct and not misleading but their accuracy is not guaranteed nor do they form part of any contract.