



Greenmoor Avenue | Lofthouse | WF3 3LG

£200,000

Two bedroom semi-detached bungalow | Council Tax Band C | EPC Rating TBC

**Emsleys** | estate agents

**\*\*\*POPULAR LOCATION. WELL PRESENTED. NO CHAIN & VACANT POSSESSION.  
CLOSE TO AMENITIES/WAKEFIELD/ROTHWELL.\*\*\***

A charming semi-detached true bungalow which presents an excellent opportunity for those seeking a comfortable and convenient living space. The property boasts two well-proportioned bedrooms, making it ideal for small families, couples, or individuals looking for a peaceful retreat.

Upon entering, you will find a welcoming reception room that offers a perfect space for relaxation or entertaining guests. A modern cream gloss finished range of fitted units are found to the functional kitchen. The layout is both practical and inviting, ensuring that you feel right at home from the moment you step inside. The bungalow also features a modern wet room, designed for both functionality and comfort.

One of the standout features of this property is the newly fitted boiler, providing peace of mind and energy efficiency for years to come. Additionally, the bungalow benefits from ample parking space for up to three vehicles including the garage, a rare find that adds to the convenience of this lovely home, completed by a low maintenance garden.

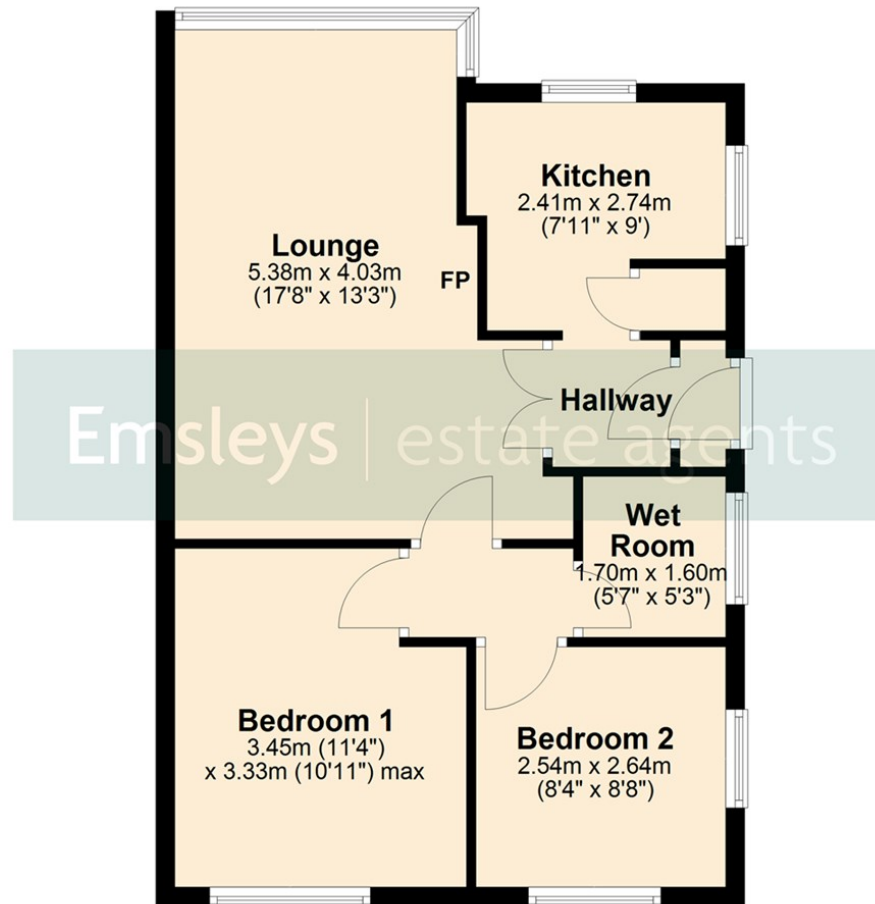
With no onward chain, this property is ready for you to move in without delay. Whether you are a first-time buyer or looking to downsize, this bungalow offers a wonderful opportunity to enjoy a relaxed lifestyle in a desirable location. Don't miss your chance to make this delightful property your own.





## Ground Floor

Approx. 52.4 sq. metres (564.3 sq. feet)



Total area: approx. 52.4 sq. metres (564.3 sq. feet)

These details are for guidance only and complete accuracy cannot be guaranteed. If there is any point, which is of particular importance, verification should be obtained. They do not constitute a contract or part of a contract. All measurements are approximate. No guarantee can be given with regard to planning permissions or fitness for purpose. No apparatus, equipment, fixture or fitting has been tested. Items shown in photographs are NOT necessarily included. Interested Parties are advised to check availability and make an appointment to view before travelling to see a property.

65 Commercial Street | Rothwell | Leeds | LS26 0QD

t: 0113 201 4040 [www.emsleysestateagents.co.uk](http://www.emsleysestateagents.co.uk)

**Emsleys** | estate agents