

**2 Bed
Apartment
located in**

AiHOMES.

Modern 2-Bed Apartment | Local Crescent | C37595LC



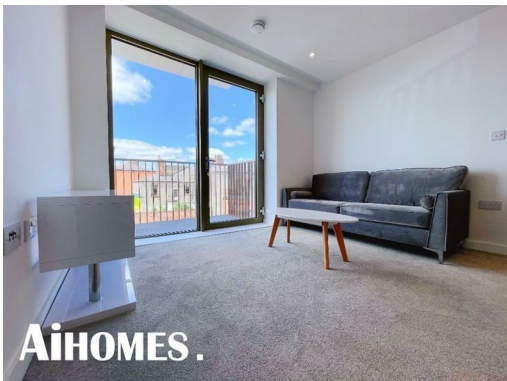
£270,000

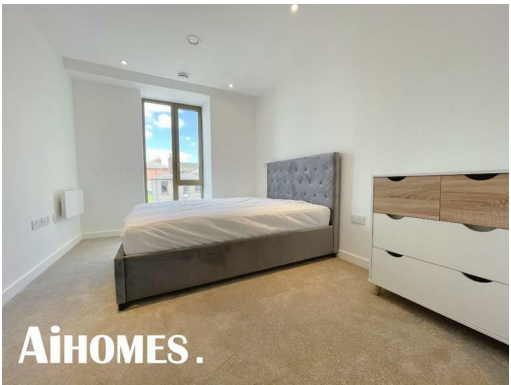
Welcome to this modern apartment located at 14 Hulme Street in the vibrant city of Manchester. This stylish residence boasts two well-proportioned bedrooms and two contemporary bathrooms, making it an ideal choice for professionals, couples, or small families seeking comfort and convenience.

Spanning an impressive 699 square feet, the apartment offers a spacious and airy living environment, perfect for both relaxation and entertaining. Built in 2020, the property features the latest in design and construction, ensuring a high standard of living with modern amenities and finishes.

The location is superb, placing you in the heart of Manchester, where you can enjoy a wealth of local attractions, including shops, restaurants, and cultural venues. With excellent transport links nearby, commuting to work or exploring the city is effortless.

This apartment presents a wonderful opportunity to experience urban living at its finest. Whether you are looking to buy or rent, this property is sure to impress with its blend of style, comfort, and convenience. Do not miss the chance to make this delightful apartment your new home.







Modern 2-Bed Apartment | Local Crescent | C37595LC





Energy Efficiency Rating		
	Current	Potential
<i>Very energy efficient - lower running costs</i>		
(92 plus) A		
(81-91) B	83	
(69-80) C		
(55-68) D		
(39-54) E		
(21-38) F		
(1-20) G		
<i>Not energy efficient - higher running costs</i>		
England & Wales	EU Directive 2002/91/EC	

EPC Rating: B
Council Tax Band: C

CONTACT

5th floor, Empress Business Center
380 Chester Road
Manchester
M16 9EA

E: info@aihomes.uk

T: 0127 332 8069

AiHOMES.