



Jamaica Road, SE16

£2,300 Per calendar month

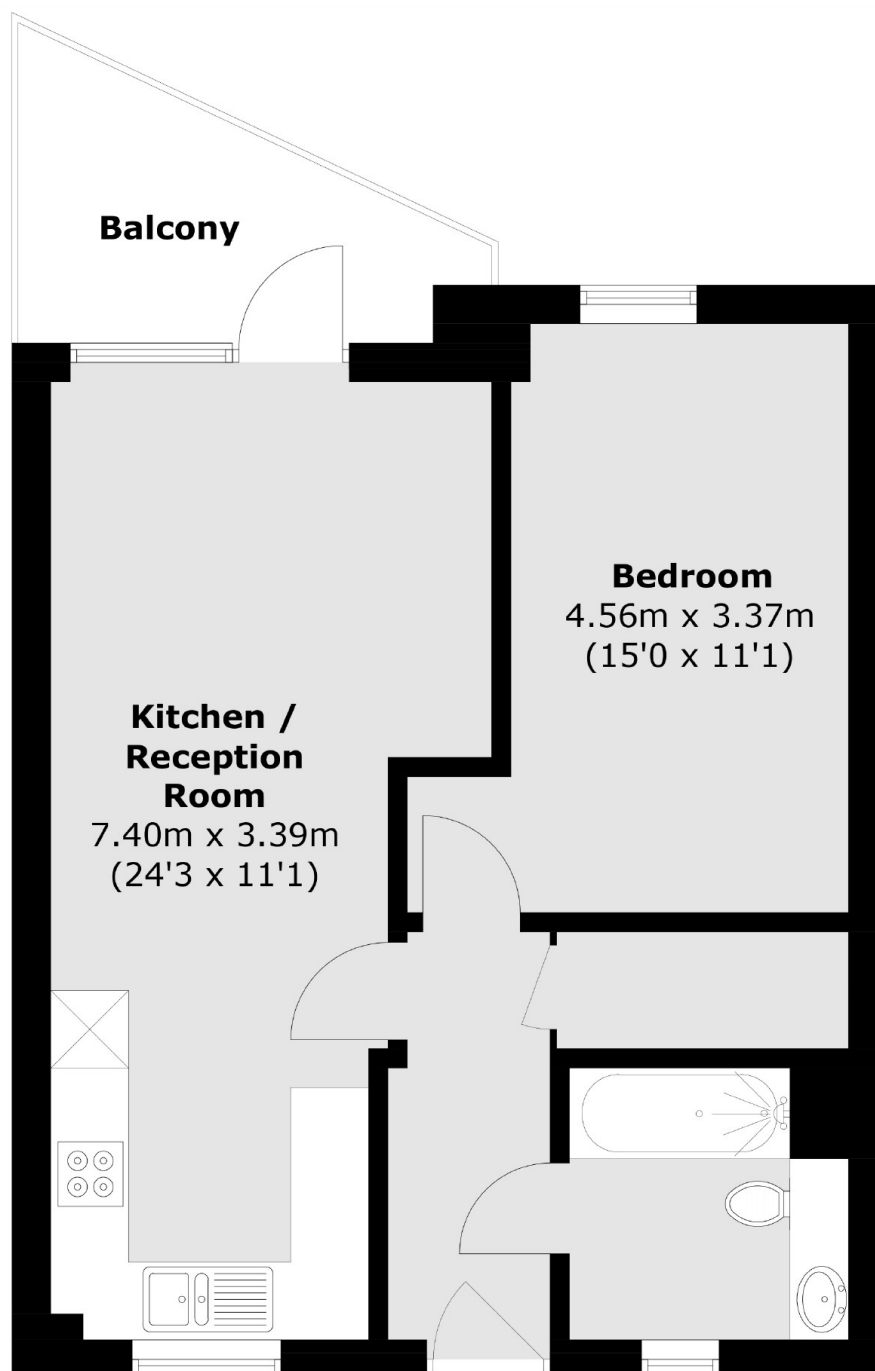
This smart and stylish one double bedroom apartment, with a modern finish, is ideal for a single professional or professional couple. This property comes with a large balcony and an open plan living space.

The Parker Building is part of a recently developed area in the heart of Bermondsey, less than 0.2 miles from the Jubilee Line which gives easy access to The City and Canary Wharf. Maltby Street Market is close by, as is London Bridge and Shad Thames.

Features

- One Double Bedroom
- Storage Room
- Modern
- Balcony
- Open Plan
- Bermondsey

Jamaica Road,
London, SE16



Total area (approx.): 47.3 sq. m (509.1 sq. ft)
Balcony area : 5.7 sq. m (61.3 sq. ft)

Dexters

Tower Bridge
50 Shad Thames
London
SE1 2LY
Lettings
0207 650 5105

Energy Rating: B. We aim to make our particulars both accurate and reliable. However they are not guaranteed; nor do they form part of an offer or contract. If you require clarification on any points then please contact us, especially if you're traveling some distance to view. Please note that appliances and heating systems have not been tested and therefore no warranties can be given as to their good working order.

 **RICS** | Regulated
Estate Agent
and Letting Agent

dexters.co.uk