



Priory Green Estate, N1

£420,000

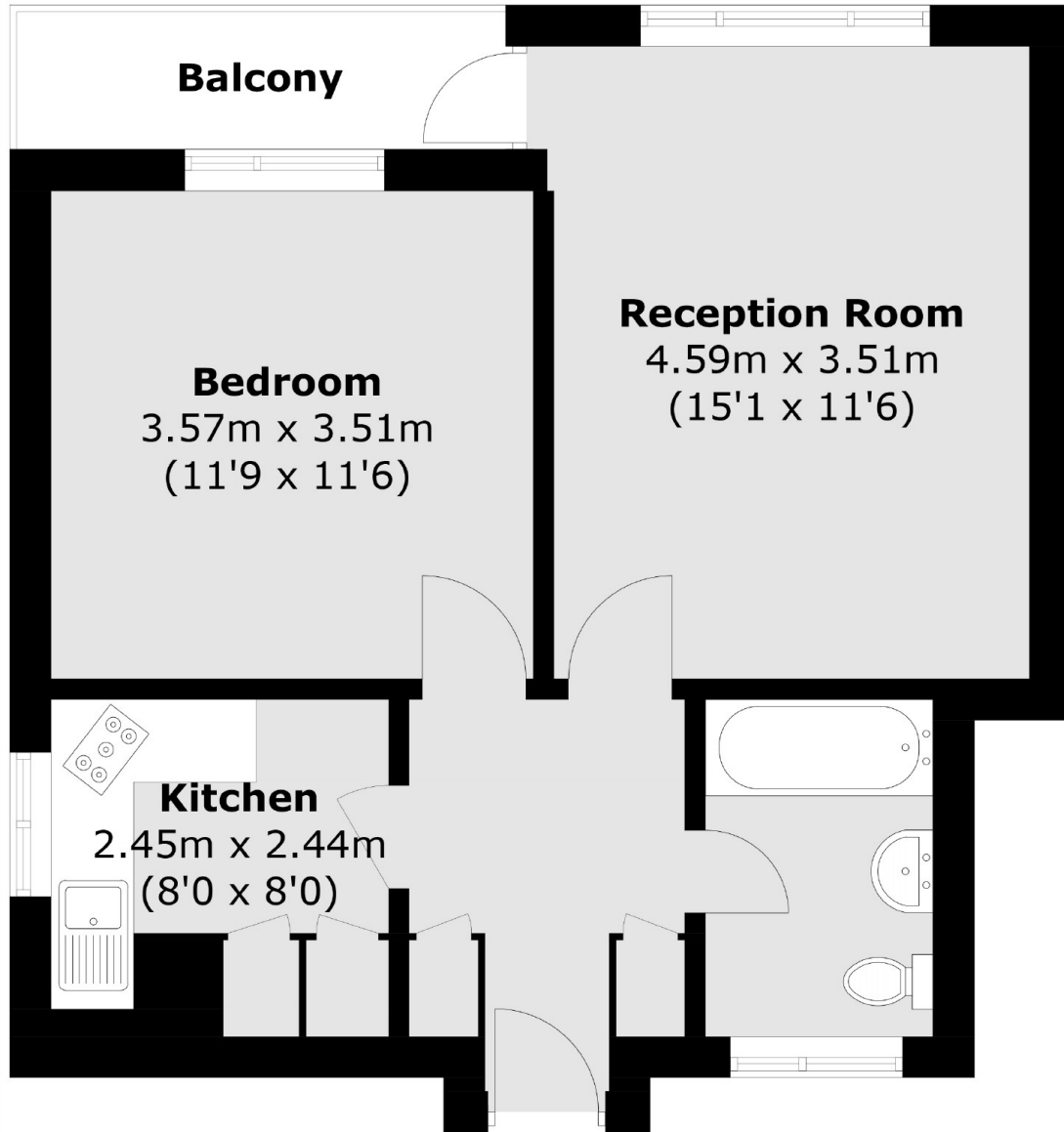
A well presented top floor (3rd floor) apartment with a separate kitchen and living room. The property is located within a gated development and includes excellent storage, low service charge and a private balcony off the living room.

Located close to King's Cross St Pancras as well as numerous amenities including Coal Drops Yard, soon to house up to 7000 Google employees.

Features

Nearly 500 Sq Ft
Private Balcony
Separate Living Room
Excellent Storage
Top Floor
No Onward Chain

Priory Green Estate,
London, N1



Total area (approx.): 46.1 sq. m (496.2 sq. ft)
Balcony area: 3.5 sq. m (37.6 sq. ft)