





**\*\*GUIDE PRICE £275,000\*\***

**\*\*NO ONWARD CHAIN\*\***

NEXA Properties are delighted to welcome this three bedroom terraced house situated on Manners Road, Southsea.

The ground floor offers three spacious reception rooms, a modern kitchen, utility area and a shower room with WC and basin.

Upstairs is comprised of three double bedrooms and a bathroom suite with bath, basin and WC.

The garden is compact but does have the benefit of a garage.

Offered with no onward chain.

Video available on request.

Contact NEXA to arrange a viewing.

- GUIDE PRICE £275,000
- NO ONWARD CHAIN
- THREE RECEPTION ROOMS
- DOUBLE BEDROOMS
- GARAGE INCLUDED
  - UTILITY AREA
- TWO BATHROOMS
- VIDEO AVAILABLE

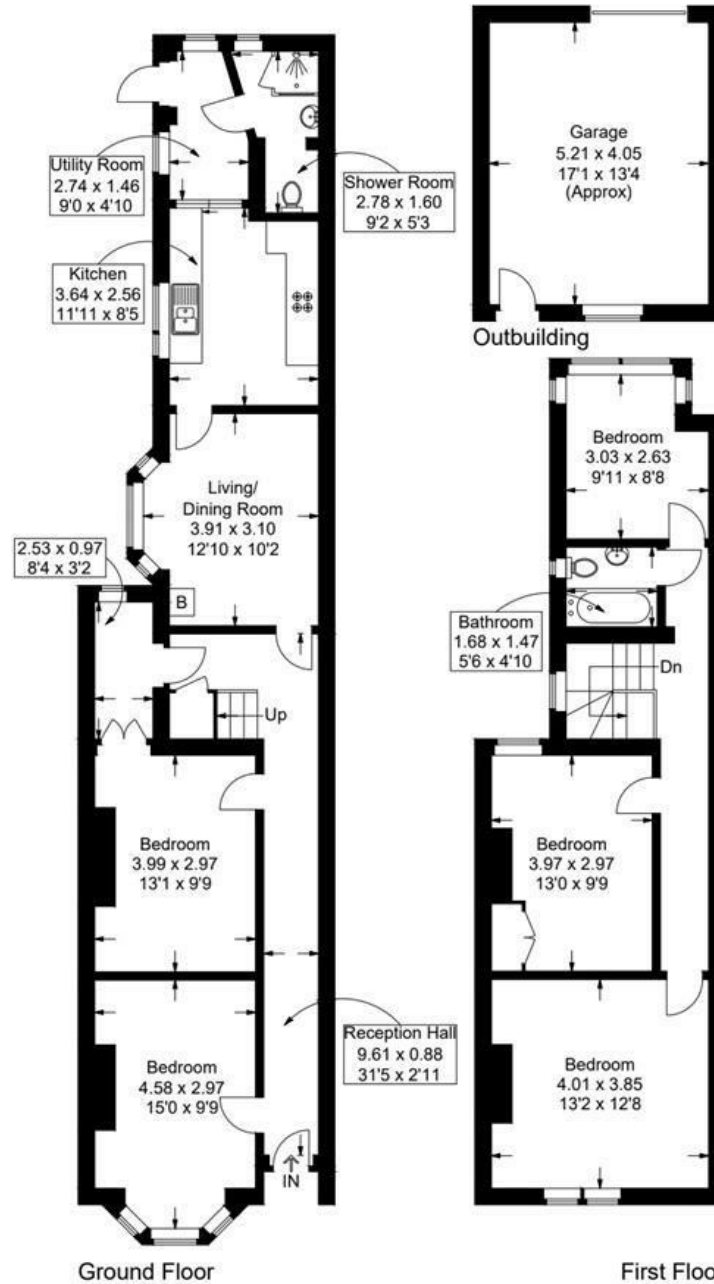


# Manners Road, Southsea

Approximate Gross Internal Area = 124 sq m / 1335 sq ft

Outbuilding = 21.4 sq m / 230 sq ft

Total = 145.4 sq m / 1565 sq ft



This plan is for layout guidance only. Not drawn to scale unless stated. Windows and door openings are approximate. Whilst every care is taken in the preparation of this plan, please check all dimensions, shapes and compass bearings before making any decisions reliant upon them.