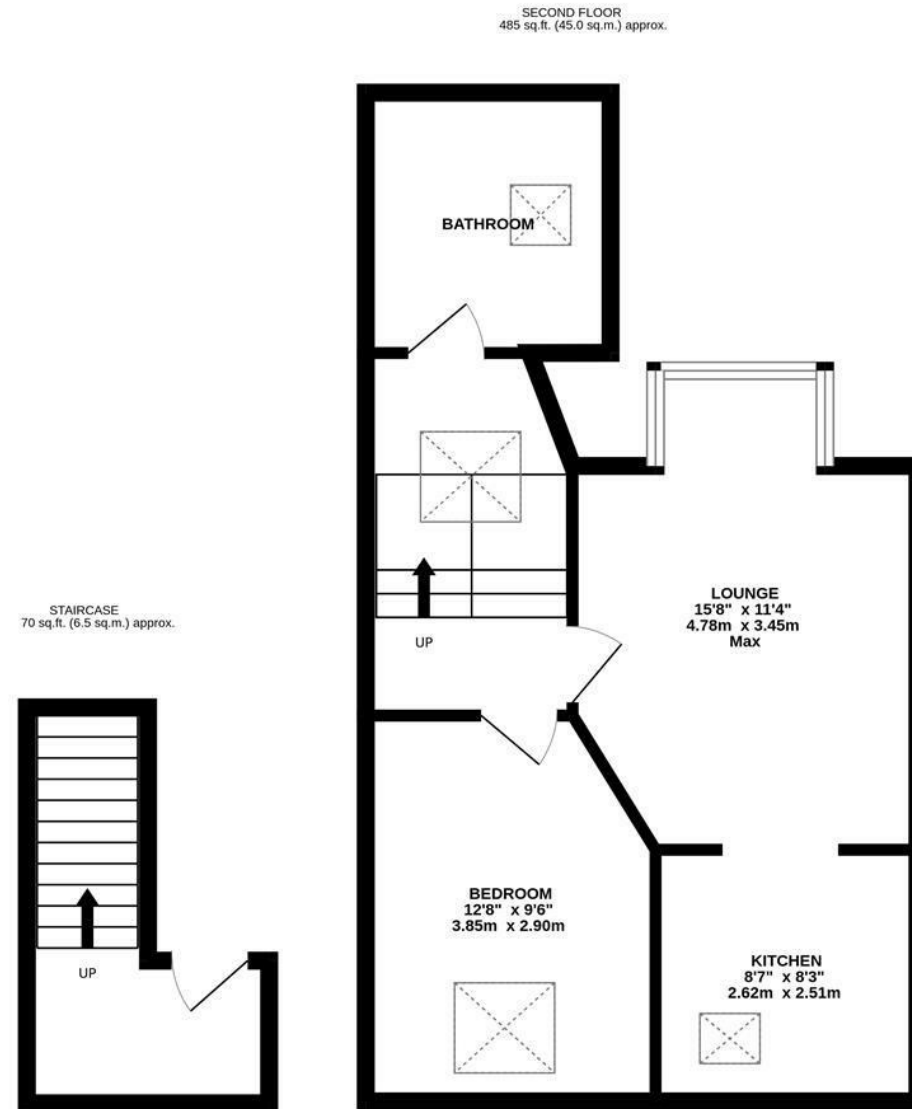




With no onward chain! This one bedroom, second floor conversion apartment is ideally located on Queens Road within the heart of Jesmond. Queens Road, situated close to the shops, restaurants and cafés of Jesmond, as well as excellent local transport links into the city centre and beyond with both Jesmond and West Jesmond Metro Stations a short walk away.

The accommodation briefly comprises: communal entrance with stairs to second floor; private entrance hall with stairs to landing; split level landing with sky light; lounge with walk in bay and dormer window, open to kitchen area with fitted units, work surfaces and sky light; double bedroom with sky light; bathroom complete with three piece suite.

Second Floor Conversion Apartment | 555 Sq ft (51.5m<sup>2</sup>) | One Double Bedroom | Lounge to Kitchen | Bathroom | No Onward Chain | Leasehold - Share of Freehold 955 Years Remaining | Service Charge Ad-Hoc | Council Tax Band A | EPC: Rating D



TOTAL FLOOR AREA: 555 sq.ft. (51.5 sq.m.) approx.

Whilst every attempt has been made to ensure the accuracy of the floorplan contained here, measurements of doors, windows, rooms and any other items are approximate and no responsibility is taken for any error, omission or mis-statement. This plan is for illustrative purposes only and should be used as such by any prospective purchaser. The services, systems and appliances shown have not been tested and no guarantee as to their operability or efficiency can be given.  
Made with Metropix ©2026



**Offers Over £120,000**

**IMPORTANT NOTE:** These particulars and the descriptions and measurements herein do not constitute representation and whilst every effort has been made to ensure accuracy, this cannot be guaranteed.

