



2 Conquerors Hill

Wheathampstead, AL4 8NT

Built in the 1940's, this well planned semi-detached family home has a spacious living space with generous garden to the rear. Features of particular note include a main bedroom with attractive en suite shower room and a garage with additional parking on the drive. CHAIN FREE

Guide price £730,000

2 Conquerors Hill

Wheathampstead, AL4 8NT



- 1940's built semi-detached house, a convenient stroll from the village High Street shops, restaurants and bars
- Spacious living room and study
- Fitted kitchen/breakfast room with adjoining dining room, cloakroom and small conservatory
- Spacious master bedroom with attractive en suite shower room
- 2 further bedrooms and family bathroom
- Garage with additional drive parking for two more cars
- Raised front garden and generously proportioned rear west facing garden
- Just a short stroll for a good selection of shops, bars, restaurants and within reach of a choice of excellent schools
- Harpenden town centre and station (3.3 miles), St Albans City Centre (5.9 miles)

GROUND FLOOR

Entrance Hall

Cloakroom

Living Room

15'5 x 11'5 (4.70m x 3.48m)

Dining Room

12'11 x 8'6 (3.94m x 2.59m)

Study

12'11 x 8'7 max (3.94m x 2.62m max)

Conservatory

9'3 x 5'8 (2.82m x 1.73m)

Kitchen/Breakfast Room

22'4 x 9'8 (6.81m x 2.95m)

FIRST FLOOR

Landing

Bedroom One

15'2 x 10'6 (4.62m x 3.20m)

En Suite Shower Room

Bedroom Two

13'3 x 9'11 (4.04m x 3.02m)

Bedroom Three

11'5 x 8'5 (3.48m x 2.57m)

Family Bathroom

EXTERNALLY

Garage and Drive

17'11 x 8'6 (5.46m x 2.59m)

Large Rear Garden



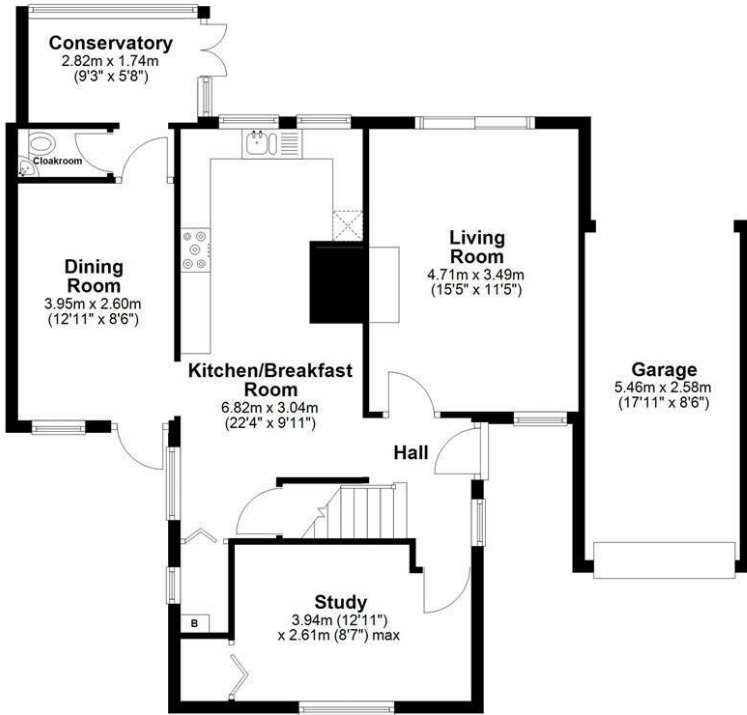
[Directions](#)



Floor Plan

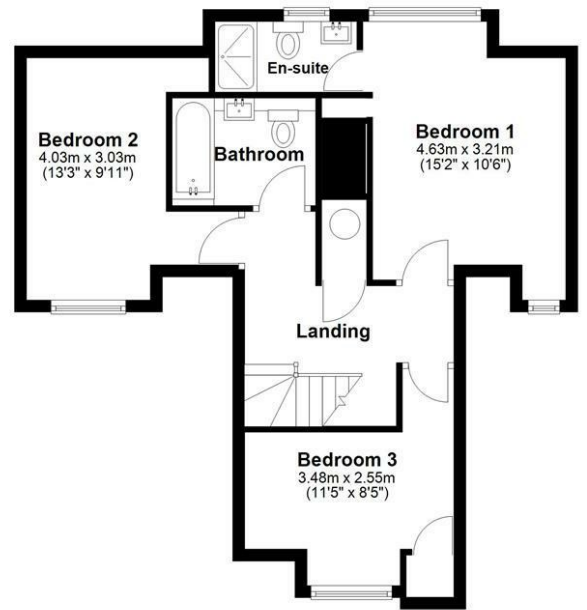
Ground Floor

Main area: approx. 72.8 sq. metres (783.3 sq. feet)
Plus garage: approx. 14.1 sq. metres (151.7 sq. feet)



First Floor

Approx. 53.4 sq. metres (574.3 sq. feet)



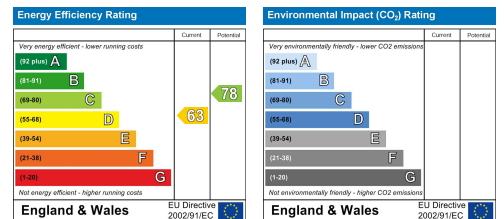
Main area: Approx. 126.1 sq. metres (1357.6 sq. feet)

Plus garage: approx. 14.1 sq. metres (151.7 sq. feet)

Sketch layout only. Not to scale. Plan produced for Whittaker & Co.

Plan produced using PlanUp.

These particulars, whilst believed to be accurate are set out as a general outline only for guidance and do not constitute any part of an offer or contract. Intending purchasers should not rely on them as statements of representation of fact, but must satisfy themselves by inspection or otherwise as to their accuracy. No person in this firm's employment has the authority to make or give any representation or warranty in respect of the property.



1 Leyton Green, Harpenden, Hertfordshire, AL5 2TE

Tel: 01582 761500 Email: sales@whittakerandco.co.uk www.whittakerandco.co.uk