



38 Armson Road, Exhall
£220,000

**SHELDON
BOSLEY
KNIGHT** LAND AND
PROPERTY
PROFESSIONALS

38 Armson Road

Exhall, Coventry

Semi Detached| Hall| Lounge|Dining Room| Modern Kitchen| Three Bedrooms| Shower Room| Gas Central Heating| Double Glazing| Frontage Provides Vehicle Parking & Rear Garden
Council Tax band: B

Tenure: Freehold

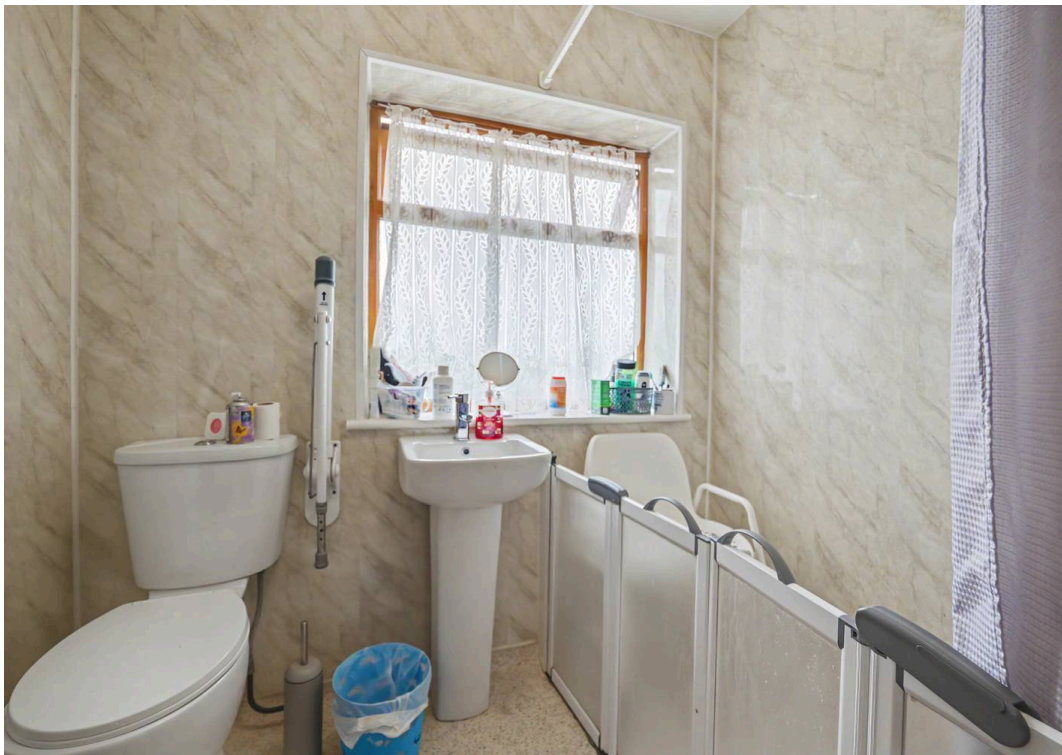
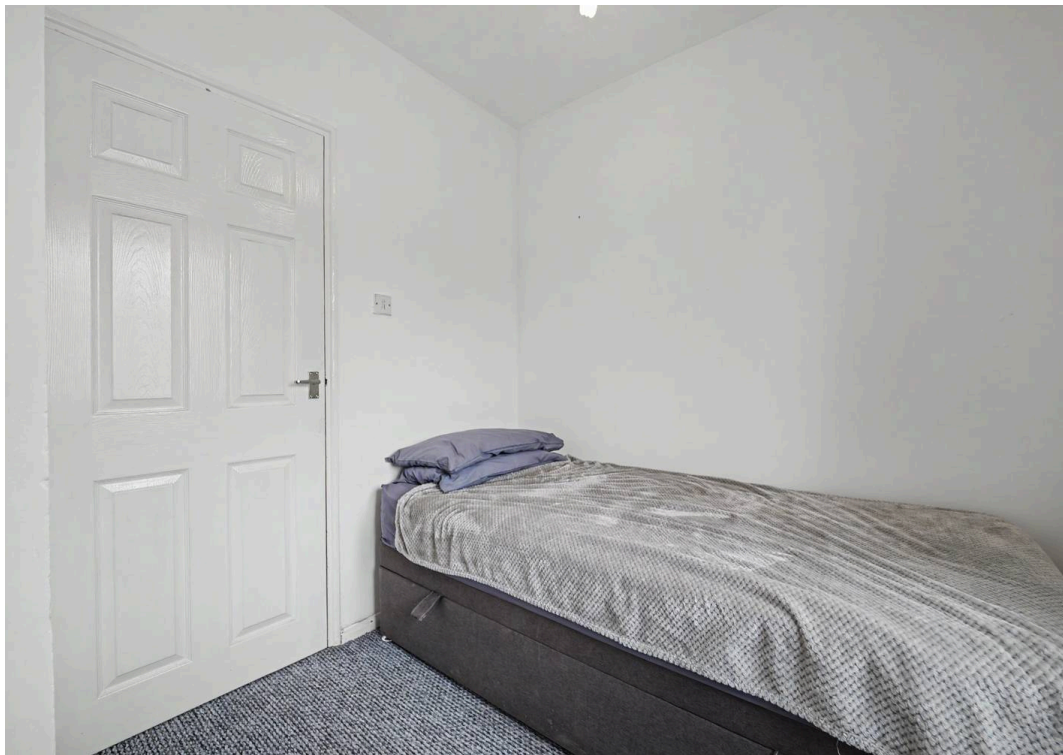
EPC Energy Efficiency Rating: D

EPC Environmental Impact Rating:

- Semi Detached House
- Porch & Entrance Hall
- Spacious Lounge & Dining Room
- Modern Kitchen
- Three Bedrooms
- Shower Room
- Gas Central Heating
- PVCu Double Glazing
- Front & Rear Gardens
- Off Road Vehicle Parking

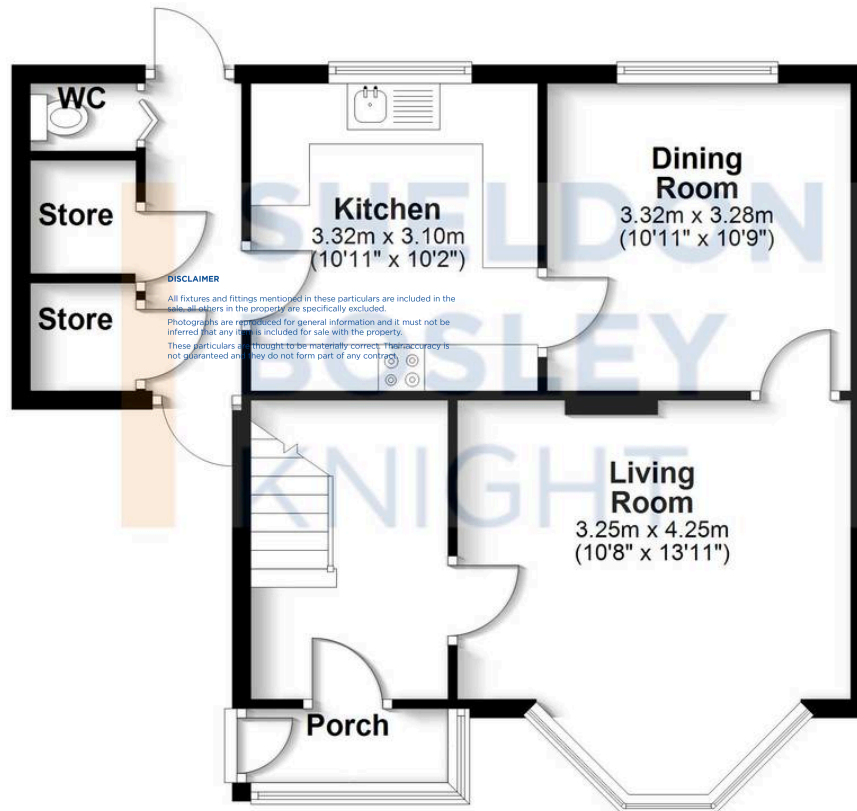






Ground Floor

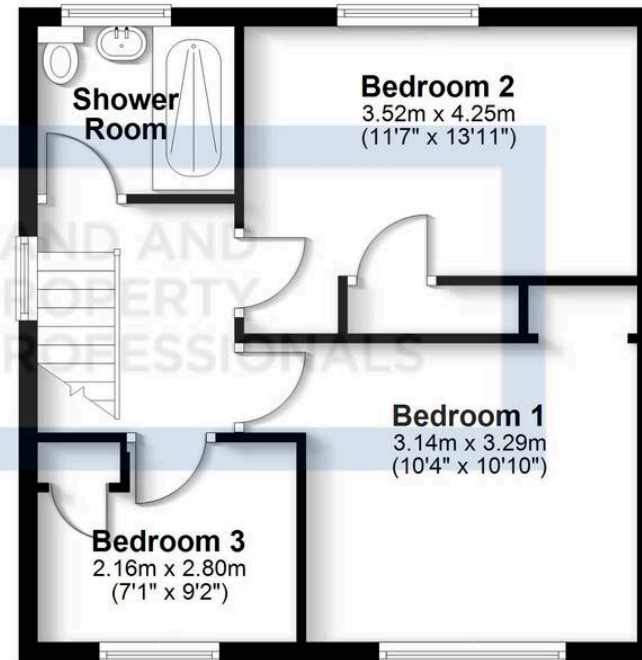
Approx. 52.8 sq. metres (568.7 sq. feet)



DISCLAIMER
All fixtures and fittings mentioned in these particulars are included in the sale, all others in the property are specifically excluded.
Photographs are reproduced for general information and it must not be inferred that any item is included for sale with the property.
These particulars are thought to be materially correct. Their accuracy is not guaranteed and they do not form part of any contract.

First Floor

Approx. 42.9 sq. metres (461.9 sq. feet)



Total area: approx. 95.7 sq. metres (1030.6 sq. feet)

All efforts have been made to ensure the measurements are accurate on this floor plan, however these are for guidance purposes only.
Plan produced using PlanUp.

Sheldon Bosley Knight Nuneaton

Sheldon Bosley Knight, 39 Newdegate Street, Nuneaton - CV11 4ER

02476374949 · nuneaton@sheldonbosleyknight.co.uk · www.sheldonbosleyknight.co.uk/

DISCLAIMER

All fixtures and fittings mentioned in these particulars are included in the sale, all others in the property are specifically excluded.

Photographs are reproduced for general information and it must not be inferred that any item is included for sale with the property.

These particulars are thought to be materially correct. Their accuracy is not guaranteed and they do not form part of any contract.