



Kepler Road, SW4

£3,500 Per calendar month

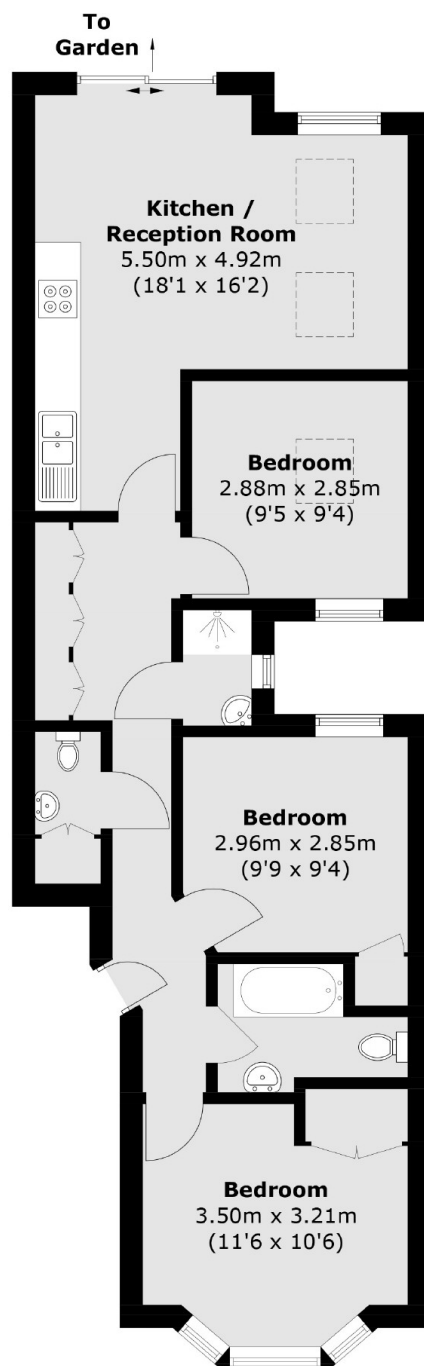
This split-level three double bedroom, two bathroom flat has a open plan reception and kitchen and a private rear patio garden which will prove a great asset in the summer months.

With Brixton Town Centre, Acre Lane's bars and Clapham High Street's famous nightlife all on your doorstep Kepler Road is perfect for young professionals!

Features

- Three Double Bedrooms
- Open Plan Reception
- Private Patio Garden
- Two Bathrooms
- Modern Specification
- Prime Location

Kepler Road, London, SW4



Total area (approx.): 67.9 sq. m (730.9 sq. ft)