



271 Wick Road

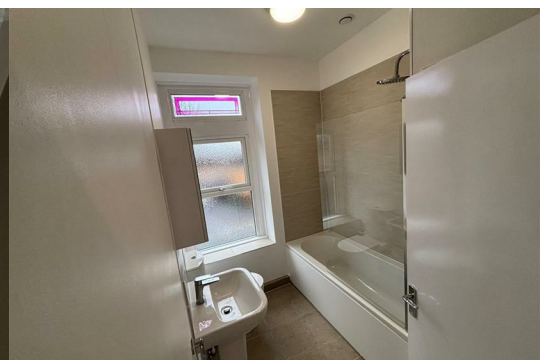
, Bristol, BS4 4HR

£1,300 Per Calendar Month



PLEASE READ DO NOT PHONE If you are interested in viewing this property please send us an alert through Rightmove / Zoopla using the Email Agent/request details option on their site. We will then respond with a brief questionnaire. On receipt, we will then contact you.

Two double bedroom, spacious first floor flat. Just been refurbished to a high standard. Great size lounge/diner with modern kitchen fitted with white goods, bay window with views towards Bristol. Modern bathroom with shower over bath. UPVC double glazing and electric modern radiators. The flat is located just a short walk from popular Sandy Park, with an array of cafes, shop and everyday amenities. Bristol city centre is easily accessible by public transport with easy links to Bristol Temple Meads. Bath city centre is also a short car or train journey.

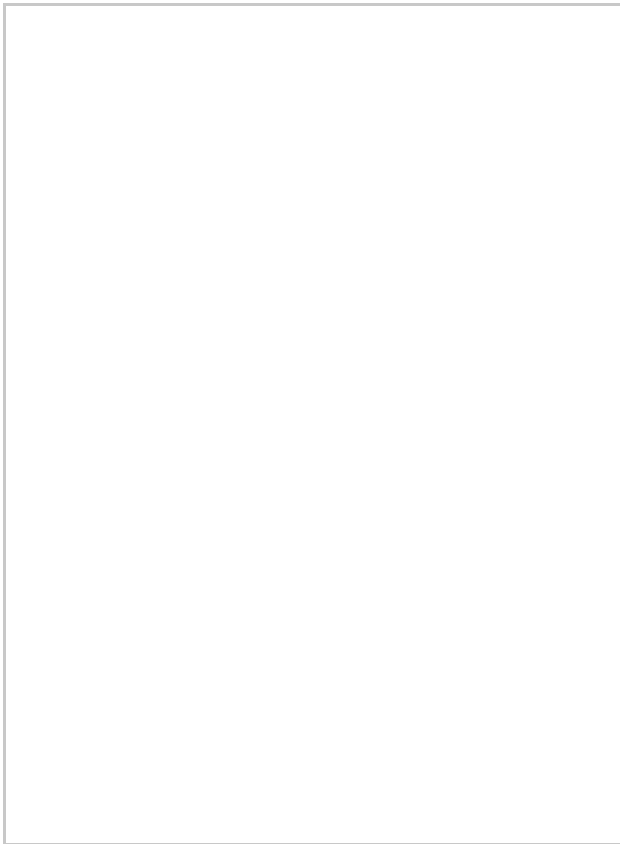


- Landing
- Lounge Kitchenette
- Bedroom 1
- Bedroom 2
- Bathroom

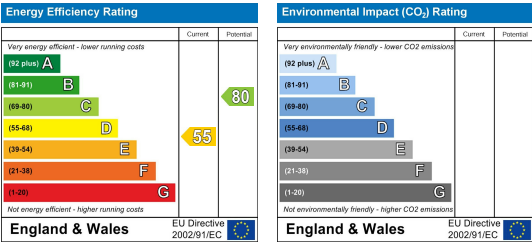
Area Map



Floor Plans



Energy Efficiency Graph



These particulars, whilst believed to be accurate are set out as a general outline only for guidance and do not constitute any part of an offer or contract. Intending purchasers should not rely on them as statements of representation of fact, but must satisfy themselves by inspection or otherwise as to their accuracy. No person in this firms employment has the authority to make or give any representation or warranty in respect of the property.