



## Lakeside Drive, NW10

£554 Per week

Stunning two double bedroom, two bathroom apartment with great views over London, comprising open plan living space with modern kitchen, private balcony, allocated parking space and ample storage throughout.

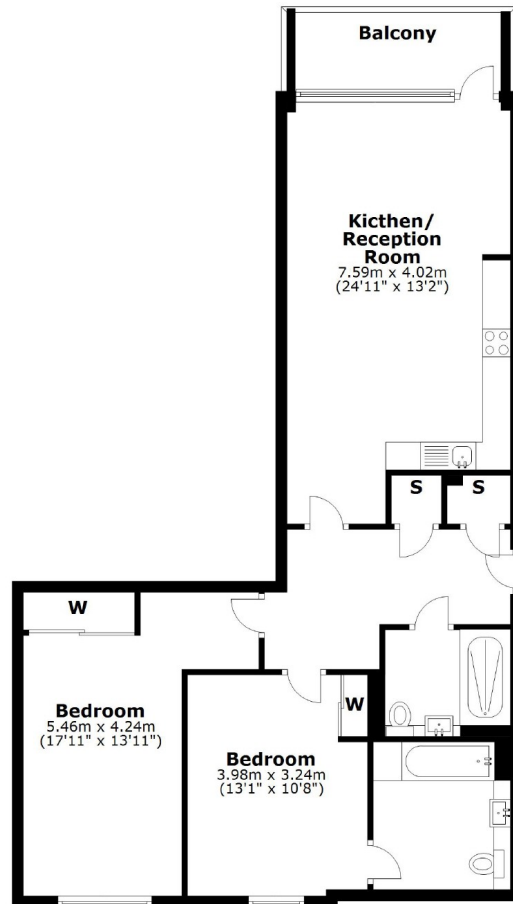
Hanger Lane (Central line) and Park Royal tube stations are just over half a mile away. Lakeside Drive is served by the 226 bus route.

### Features

- Modern Development
- Two Double Bedroom
- Wooden Floors
- Two Bathrooms
- Allocated Parking
- Private Balcony

# Lakeside Drive, London, NW10

## First Floor



Total area: approx. 83.0 sq. metres (893.1 sq. feet)