



Seymour Street, W1H

£3,445 Per calendar month

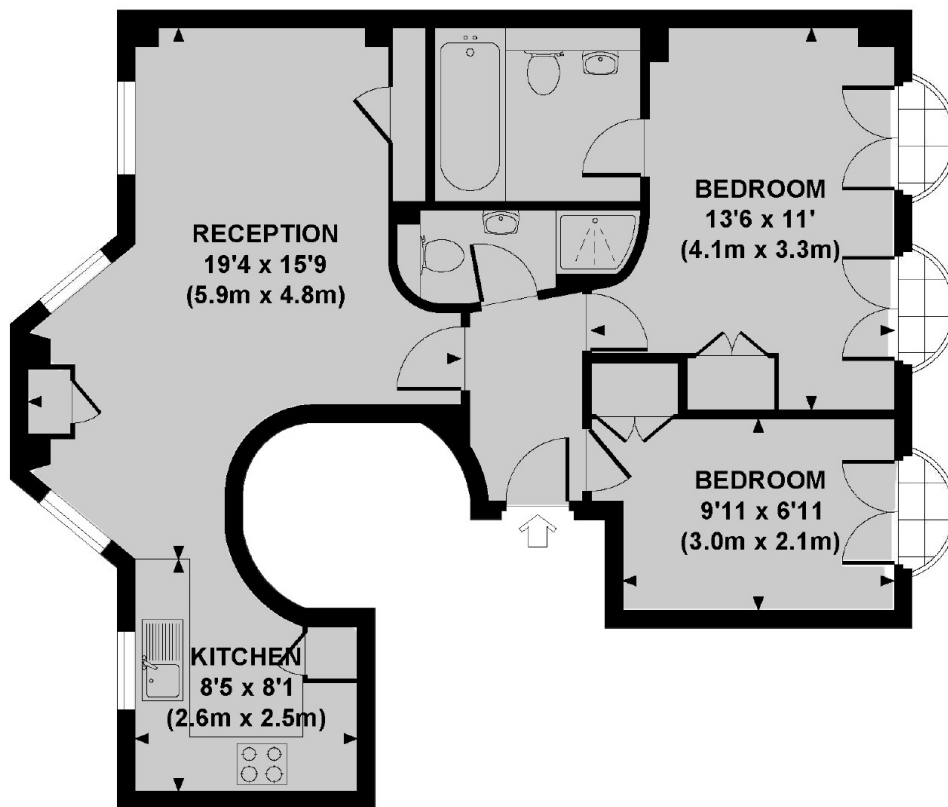
A two bedroom apartment on the first floor, with lift, of this period conversion close to Hyde Park. The property has an open-plan kitchen/reception room with wood flooring, two bedrooms and two bathrooms.

Seymour Street is a short walk from Portman Village, a favourite for locals, providing a village vibe in the heart of London. There are transport links from Marble Arch and Bond Street stations and the open spaces of Hyde Park are close by.

Features

- First Floor Flat
- Lift Access
- High Ceilings
- Two Bedrooms
- Two Bathrooms
- Kitchen/Reception

Seymour Street, London, W1H



FIRST FLOOR

Approx. gross internal area
577 Sq Ft. / 53.6 Sq M.