



Limestone Close, Great Blakenham, Ipswich, IP6 0FG

welcome to

Limestone Close, Great Blakenham, Ipswich

This well-presented, mid-terraced home is situated on the popular Blakenham Fields development and benefits from two bedrooms, a lounge/diner with doors to garden, a ground floor cloakroom, a 1st floor bathroom and off street parking for 2 cars.

Agents Note

Please note there is an annual Management Fee of approximately £299.87 payable on this property.

Entrance Hall

Tiled flooring, stairs up to the first floor and one radiator.

Lounge/Diner

Double glazed patio doors to the rear garden, carpet flooring, one radiator and an under stairs storage cupboard.

Kitchen

Double glazed window to front, tiled flooring, eye and base level units, an integrated oven with gas hob and extractor hood, an integrated fridge/freezer, space for a washing machine, a stainless steel sink with chrome mixer tap, a wall mounted gas fired boiler and spotlights.

Cloakroom

Double glazed window to front, low level WC, pedestal hand wash basin, tiled flooring, extractor fan and one radiator.

First Floor Landing

Carpet flooring and loft hatch.

Master Bedroom

Double glazed window to rear, carpet flooring and one radiator.

Bedroom Two

Double glazed window to front, carpet flooring, a storage cupboard and one radiator.

Bathroom

Low level WC, pedestal hand wash basin, a bath with overhead shower and foldable glass screen, part tiled walls, tiled effect flooring, spotlights, extractor fan and one radiator.

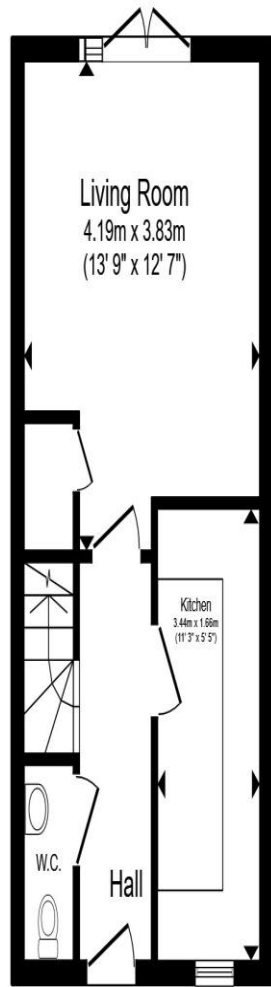
Outside:

Front Garden

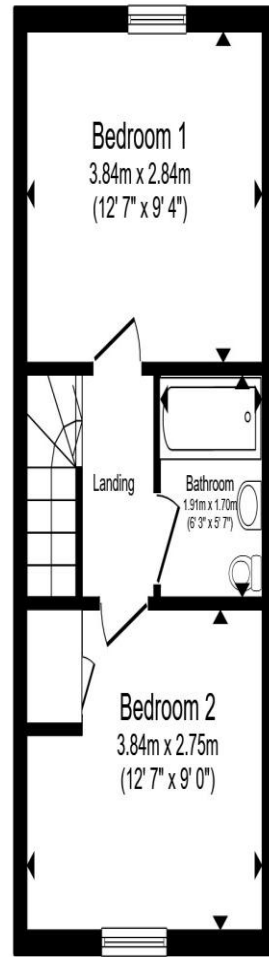
A brick paved driveway, providing off street parking for two cars, an outside tap and a pathway leading to the front door.

Rear Garden

Low maintenance rear garden with a grassed area, a patio seating area, raised flower beds, shrubs, an outside tap, a shed, a path leading to the rear of the garden and a side access leading to the front of the property.



Ground Floor



First Floor

Total floor area 59.0 m² (635 sq.ft.) approx

This floor plan is for illustrative purposes only. It is not drawn to scale. Any measurements, floor areas (including any total floor area), openings and orientation are approximate. No details are guaranteed, they cannot be relied upon for any purpose and they do not form part of any agreement. No liability is taken for any error, omission or misstatement. A party must rely upon its own inspection(s). Powered by www.propertybox.io



welcome to
Limestone Close,
Great Blakenham, Ipswich

- Two bedrooms
- Lounge/diner
- Ground floor cloakroom
- 1st floor bathroom
- Off street parking for 2 cars

Tenure: Freehold EPC Rating: C
Council Tax Band: B

£225,000



view this property online williamhbrown.co.uk/Property/IPS121202



Property Ref:
IPS121202 - 0003

1. MONEY LAUNDERING REGULATIONS Intending purchasers will be asked to produce identification documentation at a later stage and we would ask for your co-operation in order that there is no delay in agreeing the sale. 2. These particulars do not constitute part or all of an offer or contract. 3. The measurements indicated are supplied for guidance only and as such must be considered incorrect. Potential buyers are advised to recheck measurements before committing to any expense. 4. We have not tested any apparatus, equipment, fixtures or services and it is in the buyers interest to check the working condition of any appliances. 5. Where an EPC, or a Home Report (Scotland only) is held for this property, it is available for inspection at the branch by appointment. If you require a printed version of a Home Report, you will need to pay a reasonable production charge reflecting printing and other costs. 6. We are not able to offer an opinion either written or verbal on the content of these reports and this must be obtained from your legal representative. 7. Whilst we take care in preparing these reports, a buyer should ensure that his/her legal representative confirms as soon as possible all matters relating to title including the extent and boundaries of the property and other important matters before exchange of contracts.

William H Brown is a trading name of Sequence (UK) Limited which is registered in England and Wales under company number 4268443, Registered Office is Cumbria House, 16-20 Hockliffe Street, Leighton Buzzard, Bedfordshire, LU7 1GN. VAT Registration Number is 500 2481 05.



william h brown



01473 226101



ipswich@williamhbrown.co.uk



16-18 Wolsey House, Princes Street, IPSWICH,
Suffolk, IP1 1QT



williamhbrown.co.uk