



## Petersham Place, SW7

£2,423 Per week

**Dexters**



## Petersham Place, SW7

A beautifully presented five bedroom mews house arranged over four thoughtfully designed floors, offering well-proportioned living spaces and a refined contemporary finish throughout.

The property further features a private home sauna and a generous open plan kitchen and reception area, creating an inviting setting for both everyday living and sophisticated entertaining.

Petersham Place is situated just moments from Gloucester Road, providing convenient access to a wide selection of bars, restaurants, and cafés, including Como Momo Kensington.

### Features

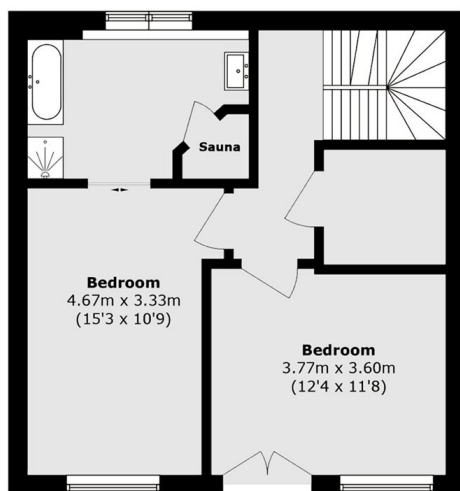
- Five Bedrooms House
- Three Bathrooms
- Four Storey
- Open Plan Reception
- Home Sauna
- Ample Storage Space



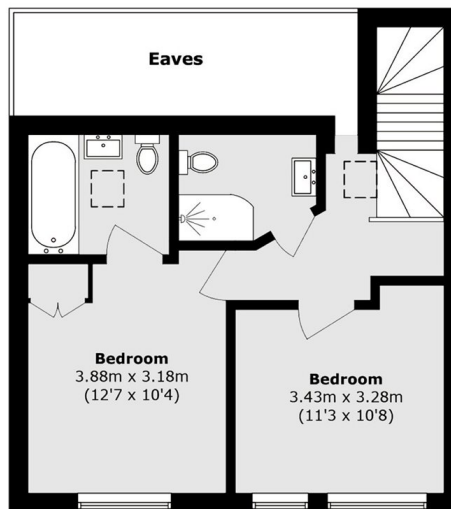




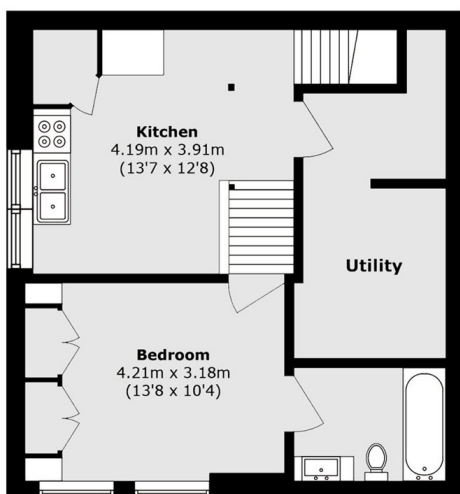
# Petersham Place, London, SW7



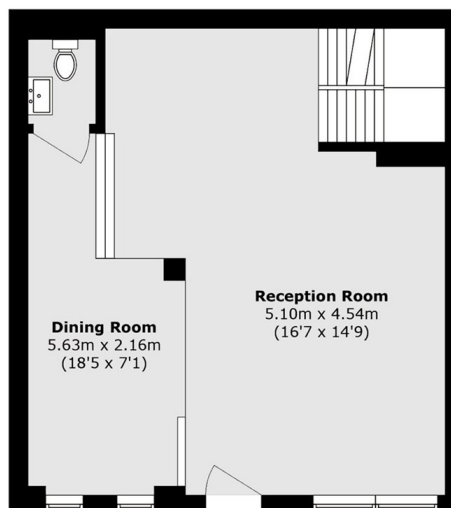
**First Floor**



**Second Floor**



**Lower Ground Floor**



**Ground Floor**

Total area (approx.): 187.5 sq. m (2018.2 sq. ft)  
(Excluding Eaves)