

Ashford Road  
Burton-on-Trent, DE13 0QG



**NO UPWARD CHAIN!** Occupying a generous corner plot at the junction of Ashford Road and Denton Road, this well-proportioned two-bedroom semi-detached bungalow offers flexible single-storey living with a variety of versatile spaces both inside and out.

**Guide Price £230,000**



**John German**

Entry to the property is via a porch which opens into a spacious central hallway, providing access to the principal accommodation. Positioned to the front of the property is the living room, a bright and welcoming space enhanced by a bay window and an attractive feature fireplace, creating a comfortable setting for relaxation.

Adjacent to the living room is the second bedroom, a versatile room which comfortably accommodates a double bed but would equally serve well as a generous single bedroom, home office, hobby room or study.

Further along the hallway is the principal bedroom, a larger double room enjoying views over the rear garden. This room benefits from framed built-in storage, offering practical wardrobe space while maintaining a comfortable layout.

Opposite the bedrooms is the family bathroom, fitted with a shower cubicle, WC, vanity unit with hand wash basin and a useful linen cupboard which also houses the boiler.

The kitchen diner sits to the rear of the property and has been designed to maximise both workspace and storage. It features a range of wall and base units with drawers, an eye-level double oven, induction hob with extractor fan above, and sink unit. The thoughtful layout still allows ample room for a formal dining table, ideally positioned beside the large window overlooking the garden.

Leading from the kitchen is the sunroom, a particularly pleasant additional living space featuring a radiator and a small burner, creating a cosy environment throughout the seasons. This versatile room could be used as a secondary sitting area, dining room or simply as a bright garden room, with a door providing direct access to the rear garden.

Off the sunroom is a practical utility room offering space for a fridge freezer, washing machine and dryer, alongside an additional sink and further storage. Both the sunroom and utility room benefit from tiled flooring for ease of maintenance. Beyond this space is a workshop, ideal for hobbies, storage or DIY projects. The utility and workshop areas were originally part of the property's garage, providing useful extended accommodation.

Externally, the property enjoys wraparound outdoor space thanks to its corner plot position. The front garden features slabbed pathways with raised planting beds, mature shrubs and established greenery creating an attractive approach to the home.

To the side, a driveway with wooden gates provides off-road parking for up to three vehicles. The rear garden offers a lawned area complemented by a slate-chipped

section and a variety of tiered spaces, creating several seating areas to follow the sun throughout the day. Whether retained as a varied landscaped garden or adapted into a more low-maintenance design, the outdoor space offers excellent potential while maintaining a good degree of privacy.

The property is well positioned for access to a range of local amenities including nearby shops, supermarkets and everyday services, while Burton-on-Trent town centre is just a short distance away offering a wider selection of retail, dining and leisure facilities. The home is also within just a few minutes' walk of Queen's Hospital Burton, making it particularly convenient for healthcare professionals or those wishing to remain close to key services. Public transport links are easily accessible, and the nearby A38 provides convenient road connections towards Derby, Lichfield and the wider Midlands.

**Tenure:** Freehold (purchasers are advised to satisfy themselves as to the tenure via their legal representative).

**Please note:** It is quite common for some properties to have a Ring doorbell and internal recording devices.

**Property construction:** Standard **Parking:** Off road **Electricity supply:** Mains **Water supply:** Mains **Sewerage:** Mains **Heating:** Mains gas (Purchasers are advised to satisfy themselves as to their suitability).

**Broadband type:** TBC

See Ofcom link for speed: <https://checker.ofcom.org.uk/>

**Mobile signal/coverage:** See Ofcom link <https://checker.ofcom.org.uk/>

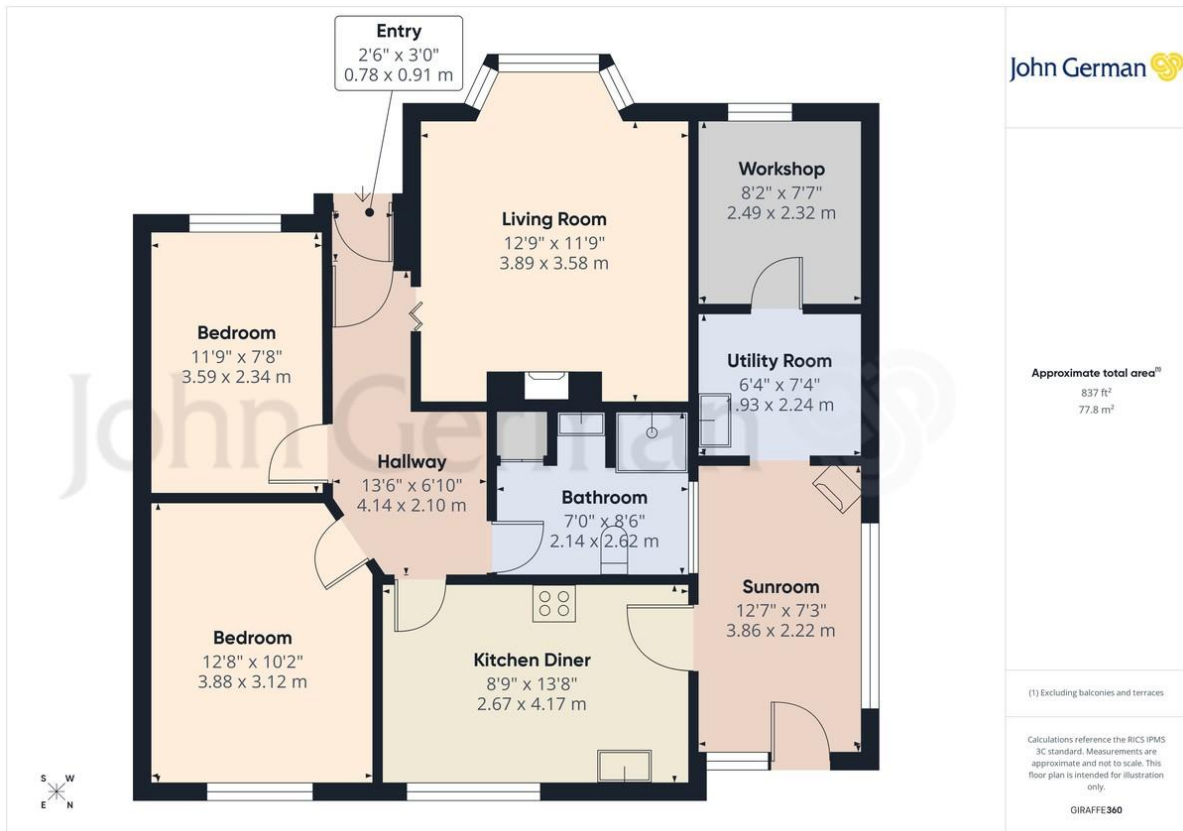
**Local Authority/Tax Band:** East Staffordshire Borough Council / Tax Band C

**Useful Websites:** [www.gov.uk/government/organisations/environment-agency](http://www.gov.uk/government/organisations/environment-agency)

**Our Ref:** JGA17032026

The property information provided by John German Estate Agents Ltd is based on enquiries made of the vendor and from information available in the public domain. If there is any point on which you require further clarification, please contact the office and we will be pleased to check the information for you, particularly if contemplating travelling some distance to view the property. Please note if your enquiry is of a legal or structural nature, we advise you to seek advice from a qualified professional in their relevant field.

We are required by law to comply fully with The Money Laundering Regulations 2017 and as such need to complete AML ID verification and proof / source of funds checks on all buyers and, where relevant, cash donors once an offer is accepted on a property. We use the Checkboard app to complete the necessary checks, this is not a credit check and therefore will have no effect on your credit history. With effect from 1<sup>st</sup> March 2025 a non-refundable compliance fee of £30.00 inc. VAT per buyer / donor will be required to be paid in advance when an offer is agreed and prior to a sales memorandum being issued.







Score	Energy rating	Current	Potential
92+	A		
81-91	B		
69-80	C		78 C
55-68	D	65 D	
39-54	E		
21-38	F		
1-20	G		



John German  
129 New Street, Burton-On-Trent, Staffordshire, DE14  
3QW

01283 512244  
burton@johngerman.co.uk

#### Agents' Notes

These particulars do not constitute an offer or a contract neither do they form part of an offer or contract. The vendor does not make or give and Messrs. John German nor any person employed has any authority to make or give any representation or warranty, written or oral, in relation to this property. Whilst we endeavour to make our sales details accurate and reliable, if there is any point which is of particular importance to you, please contact the office and we will be pleased to check the information for you, particularly if contemplating travelling some distance to view the property. None of the services or appliances to the property have been tested and any prospective purchasers should satisfy themselves as to their adequacy prior to committing themselves to purchase.

#### Referral Fees

**Mortgage Services** - We routinely refer all clients to APR Money Limited. It is your decision whether you choose to deal with APR Money Limited. In making that decision, you should know that we receive on average £60 per referral from APR Money Limited.

**Conveyancing Services** - If we refer clients to recommended conveyancers, it is your decision whether you choose to deal with this conveyancer. In making that decision, you should know that we receive on average £150 per referral.

**Survey Services** - If we refer clients to recommended surveyors, it is your decision whether you choose to deal with this surveyor. In making that decision, you should know that we receive up to £90 per referral.

Ashbourne | Ashby de la Zouch | Barton under Needwood  
Burton upon Trent | Derby | East Leake | Lichfield  
Loughborough | Stafford | Uttoxeter

**JohnGerman.co.uk** Sales and Lettings Agent