



Church Street | | Maidstone | ME14 1FH

£170,000



**LEAFY
ESTATES**

Key features

- Top floor
- Open Plan Lounge/diner/kitchen
- Close to Amenities
- Balconies off the lounge and the bedroom
- Town Centre Location
- Share of freehold with 999 year lease from 2018 and peppercorn ground rent

Description

Top floor town centre one bed apartment finished to a high standard comprising open-plan lounge/dining room/kitchen with balcony off, double bedroom with balcony off, shower room and hallway.

Directions



Top floor town centre one bed apartment finished to a high standard comprising open-plan lounge/dining room/kitchen with balcony off, double bedroom with balcony off, shower room and hallway.

Accommodation comprises:

Entrance hall: With light oak laminate flooring, utility cupboard with water tank

Lounge/dining room with open plan kitchen: With wall and floor mounted kitchen units with integrated fridge freezer, washing machine, electric cooker, hob and extractor, light oak laminate flooring, French windows to balcony

Double bedroom: With built in double mirrored wardrobe, carpet to floor, French windows to balcony

Shower room: With walk in shower, wc and washbasin with vanity unit

The property enjoys views over the town of Maidstone from one balcony and over the development's courtyard from the other. It is offered with a share of the freehold with the remainder of a 999 year lease from 2018 and a peppercorn ground rent.

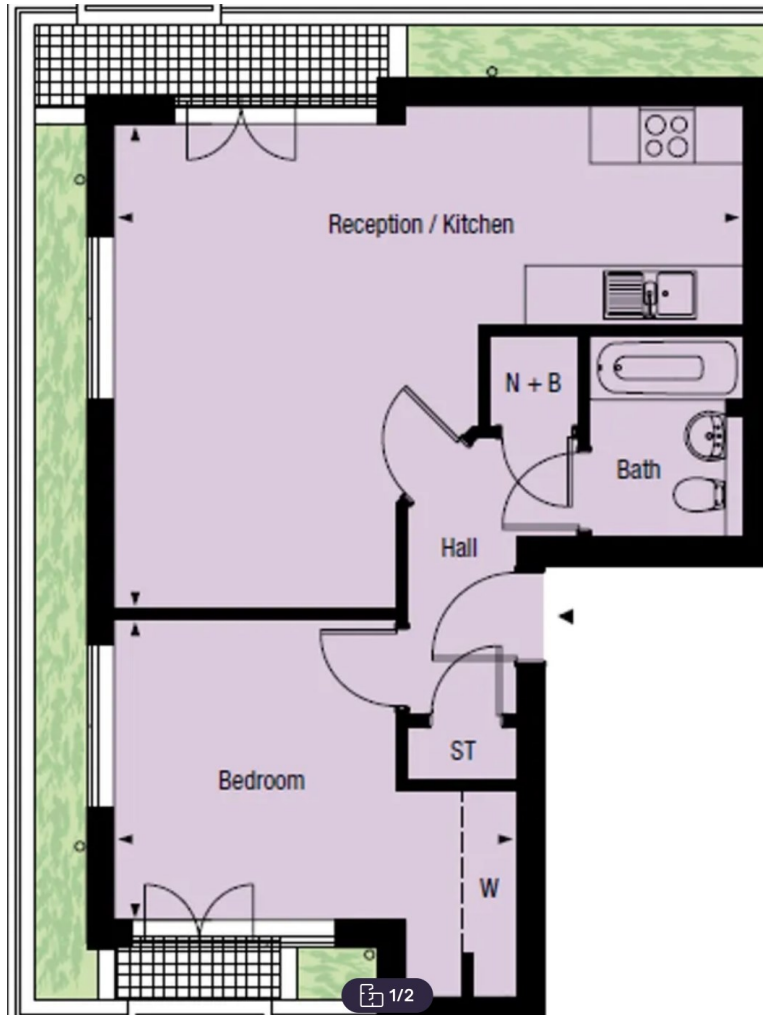
EPC Rating: C

Location

This apartment is located in a gated development off Church Street close to Maidstone town centre with its range of amenities, pubs and restaurants and a short distance from Maidstone East railway station.



Floor plans



Energy Efficiency Rating		
	Current	Potential
<i>Very energy efficient - lower running costs</i>		
(92 plus) A		
(81-91) B		
(69-80) C	80	
(55-68) D		
(39-54) E		
(21-38) F		
(1-20) G		
<i>Not energy efficient - higher running costs</i>		
England & Wales	EU Directive 2002/91/EC	

Council Tax Band C EPC Rating C



68 South Hill Avenue
 Harrow
 HA2 0NH
 02081501988
 sales@leafyestates.co.uk
 leafyestates.co.uk