

WE VALUE



YOUR HOME



Abingdon Road, Burcot  
£1,250 PCM

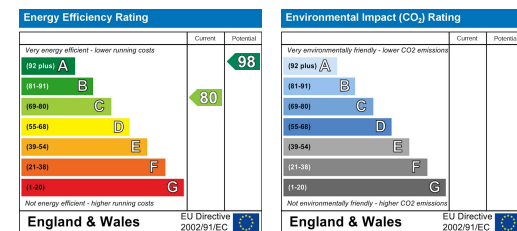


\*Available from early August 2026, part-furnished\*

Set in a semi-rural location, this single storey annexe features a spacious open-plan kitchen/breakfast/lounge area, a double bedroom and a fully fitted shower room. With bi-folding doors, underfloor heating and off-street parking, this rental property is ideal for those wanting to reside away from the hubbub of town and city life.

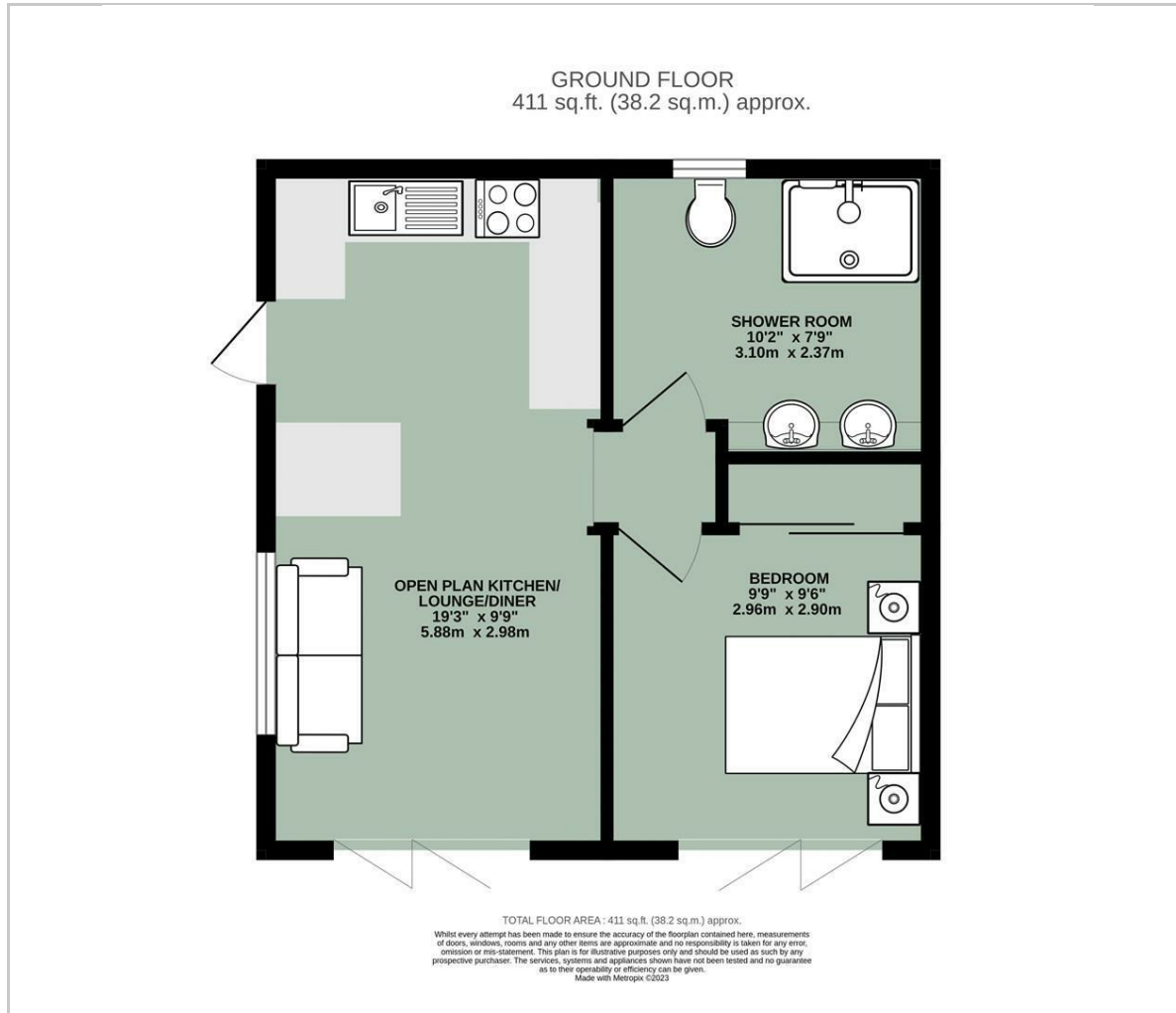


- AVAILABLE EARLY AUGUST 2026 FOR LONG-TERM LET, UNFURNISHED
- PART-FURNISHED ANNEXE
- RENT INCLUSIVE OF COUNCIL TAX, WATER & WIFI
- SPACIOUS OPEN PLAN KITCHEN/DINER/LOUNGE
- BI-FOLDING DOORS TO BEDROOM & LOUNGE AREA
- FITTED SHOWER ROOM WITH 'HIS & HERS' BASINS
- UNDERFLOOR HEATING
- OFF-STREET PARKING

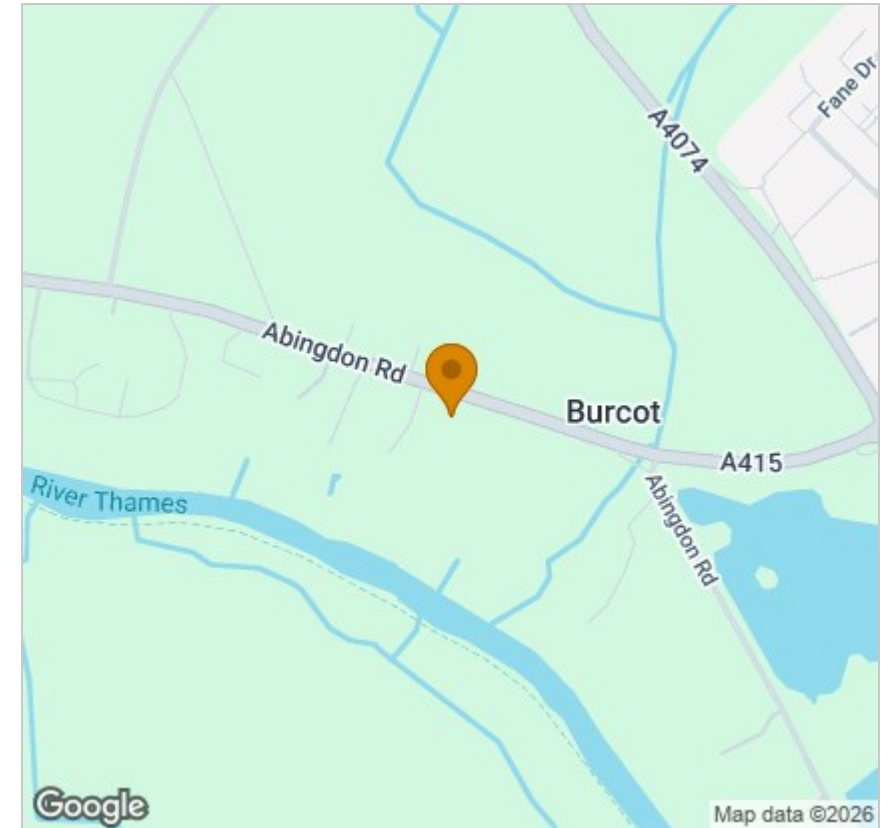


Energy Efficiency Graph

## Floor Plan



## Area Map



## Viewing

Please contact our In House Sales & Lettings Office on 01491 839999 opt.1  
if you wish to arrange a viewing appointment for this property or require further information.

These particulars, whilst believed to be accurate are set out as a general outline only for guidance and do not constitute any part of an offer or contract. Intending purchasers should not rely on them as statements of representation of fact, but must satisfy themselves by inspection or otherwise as to their accuracy. No person in this firm's employment has the authority to make or give any representation or warranty in respect of the property.

28 St Martins Street, Wallingford, Oxfordshire, OX10 0AL  
Tel: 01491 839999 opt.1 Email: [sales@inhouseestateagents.co.uk](mailto:sales@inhouseestateagents.co.uk) [www.inhouseestateagents.co.uk](http://www.inhouseestateagents.co.uk)