



Price
£1,300,000

Freehold

6x  3x  2x 

**Robin Lodge, The
Street, Cobham,
Gravesend, Kent, DA12**

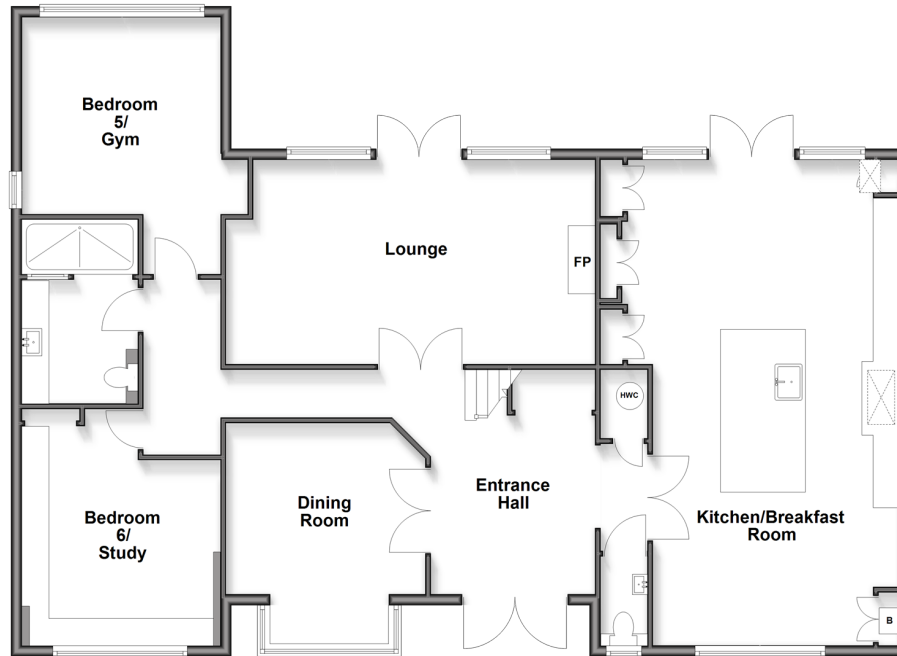
OVER 60?

Secure this property
for up to **59% less!**

Wards
Helping you move forwards

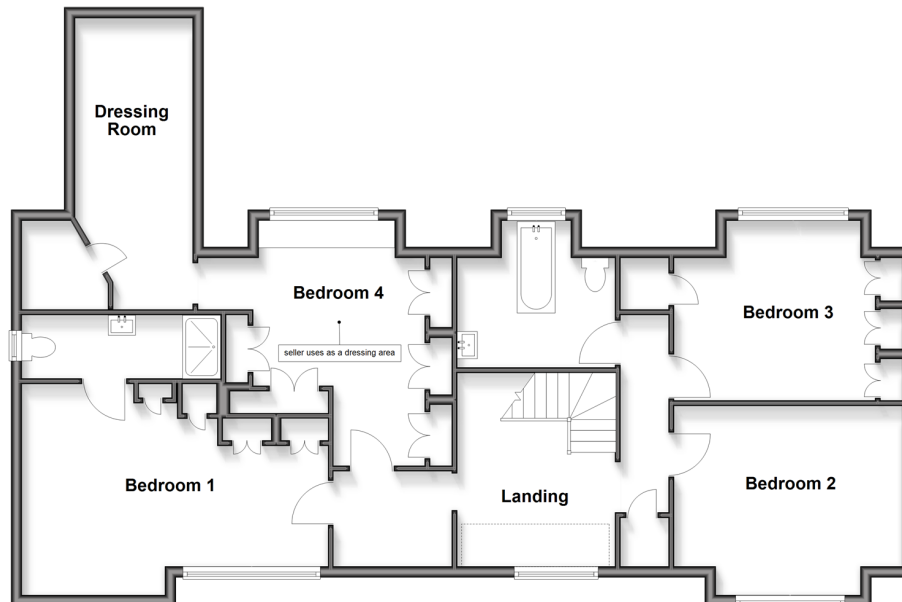
Ground Floor

Approx. 148.2 sq. metres (1595.4 sq. feet)



First Floor

Approx. 109.0 sq. metres (1172.9 sq. feet)



Accommodation

GROUND FLOOR

Entrance Hall

Cloakroom

Lounge : 22'2 x 12'4 (6.76m x 3.76m)

Kitchen/Breakfast Room: 29'2 x 16'11 (8.90m x 5.16m)

Dining Room : 13'2 x 12'1 (4.02m x 3.69m)

Bedroom 5/Gym: 16'3 x 12'0 (4.96m x 3.66m)

Bedroom 6/Study : 14'3 x 11'11 (4.35m x 3.63m)

Double Wet Room : 10'2 x 7'2 (3.10m x 2.19m)

FIRST FLOOR

Landing

Bedroom 1: 18'6 x 11'9 (5.64m x 3.58m)

Ensuite Shower Room : 11'10 x 3'9 (3.61m x 1.14m)

Bedroom 2: 14'11 x 11'1 (4.55m x 3.38m)

Bedroom 3: 15'0 x 9'7 (4.58m x 2.92m)

Bedroom 4: 16'1 x 7'2 (4.91m x 2.19m)

Dressing Room : 13'5 x 12'1 (4.09m x 3.69m)

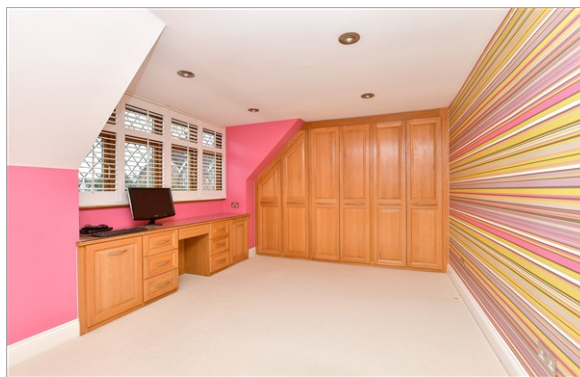
Bathroom : 9'6 x 8'7 (2.90m x 2.62m)

OUTSIDE

Driveway

Front Garden

Rear Garden



Main features

- Offered with no onward chain
- Set behind electric gates, enjoying privacy, security and parking for multiple vehicles
- Comprehensive CCTV and alarm system
- Beautifully appointed with premium Villeroy & Boch fittings and state of the art Bang & Olufsen televisions
- Positioned within a prestigious location and catchment of highly regarded school



Nearest Schools

Primary and Secondary Schools: Cobham Primary 0.0 miles, Singlewell Primary 1.7 miles, Meopham Community Primary 2.1 miles, Cobham Hall 0.5 miles, Helen Allison School 2.1 miles, Thamesview School 2.2 miles, Meopham School 2.3 miles



Transport Information

Train Stations: Sole Street 1.1 miles, Meopham 1.7 miles, Cuxton 2.7 miles



Address

Robin Lodge, The Street, Cobham, Gravesend, Kent, DA12



Directions

For directions to this property please contact us.



Wards
Helping you move forwards

Call Meopham Branch 01474 813100 ■ wardsofkent.co.uk



■ Through a Homewise Home For Life Plan people aged 60+ can secure this property for up to 59% less, by purchasing a Lifetime Lease



13326215/20260327/SB/KD