

Chapel Road, Morley St Botolph, NR18

£340,000

3 1 2

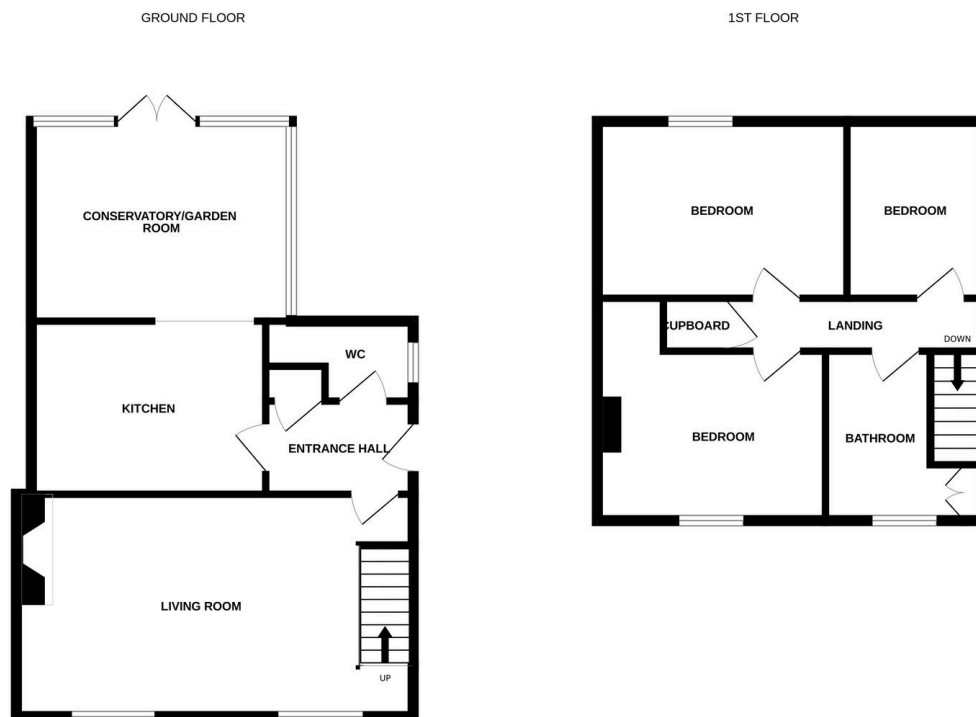


Moneyproperties are thrilled to be marketing this three-bedroom semi-detached cottage boasting character and charm throughout and within walking distance to the sought-after Wymondham College. This charming home comprises of an entrance hall, 21ft living room with feature fireplace, kitchen that opens out to the conservatory dining area and downstairs wc. To the upstairs comes three spacious and well-proportioned bedrooms along with a family bathroom. Outside the property enjoys a south-west facing garden with a firepit area, single garage, and off-road parking for 3+ cars. The property comes to market with no-onward chain.

Tenure: Freehold EPC: D Council Tax: B

Key Features

- Spacious three-bedroom semi-detached cottage
- 21ft living room with feature fireplace
- Three spacious and well-proportioned bedrooms
- Walking distance to the sought after Wymondham College
- No onward chain!!!
- Boasting character and charm throughout
- Kitchen opening out into the conservatory/diner
- South-west facing garden with patio and firepit area
- Off-road parking and single garage
- See our full online listing for further details including flood risk, broadband speed and other material information.



Whilst every attempt has been made to ensure the accuracy of the floorplan contained here, measurements of doors, windows, rooms and any other items are approximate and no responsibility is taken for any error, omission or mis-statement. This plan is for illustrative purposes only and should be used as such by any prospective purchaser. The services, systems and appliances shown have not been tested and no guarantee as to their operability or efficiency can be given.
Made with Metropix ©2025