

Visit Alternative Available



**Price**

**£2,000 PCM**

Fees Apply

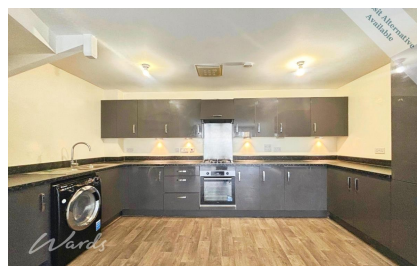


Available 28/03/26

**Temple Hill Dartford  
DA1**

*Wards*

Helping you move forwards



## Main Features

- End of terrace family home
- Set over three floors
- One allocated parking space
- Bathroom, shower room & en-suite
- Open plan lounge/kitchen area
- Close proximity to Dartford station



Deposit required is £2,307.69  
Dartford District - Council Tax Band Tax Band E

Renting a property is a big commitment and we recommend that you visit the local authority website and these websites which offer helpful information and advice about letting

[www.gov.uk/government/publications/how-to-rent](http://www.gov.uk/government/publications/how-to-rent)

[www.gov.uk/private-renting](http://www.gov.uk/private-renting)

[www.wardsofkent.co.uk/renting/tenancy-fees-individuals/](http://www.wardsofkent.co.uk/renting/tenancy-fees-individuals/)

[www.gov.uk/green-deal-energy-saving-measures](http://www.gov.uk/green-deal-energy-saving-measures)

Call Dartford 01322 311291 ■ [wardsofkent.co.uk](http://wardsofkent.co.uk)

IMPORTANT INFORMATION: Please contact our Lettings Team who will confirm the total costs involved in renting this property. For clarification, we wish to inform the prospective tenant that we have prepared these details as a general guide. The agent has not carried out a detailed survey nor tested the services, appliances, or specific fittings (unless otherwise stated), and no warranty can be given as to their condition. All room measurements are taken at floor level. We strongly recommend that all the information which we provide about the property is verified by yourself and your advisers. The contents of this publication are © Wards, 2015. Wards is a trading name of Arun Estates Limited Registered in England No. 2597969

## Accommodation

### Entrance Hall

Open Plan Lounge/Diner 8.46m x 2.60m

Study/Bedroom 4 2.71m x 2.43m

Bedroom 1 3.40m x 4.59m

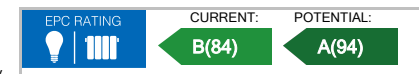
Bedroom 2 3.44m x 4.00m

En-suite Shower Room 2.12m x 1.54m

Bedroom 3 2.51m x 4.59m

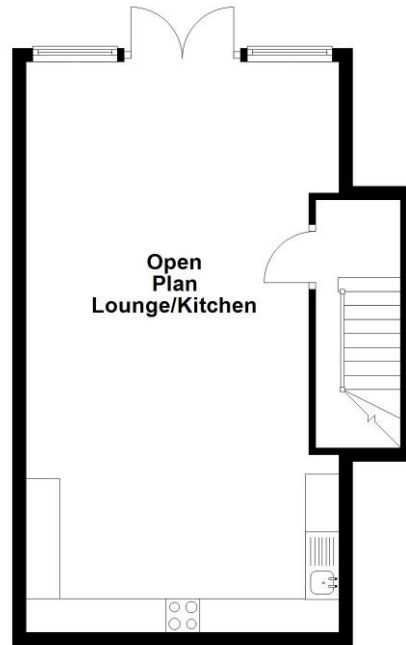
Bathroom 2.09m x 2.57m

Shower Room 1.93m x 2.44m



### Ground Floor

Approx. 49.3 sq. metres (530.1 sq. feet)



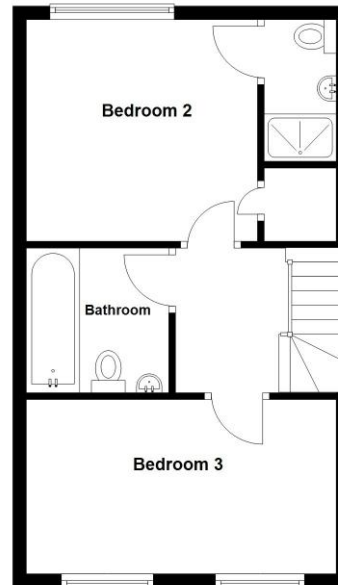
### First Floor

Approx. 44.8 sq. metres (481.9 sq. feet)



### Second Floor

Approx. 39.9 sq. metres (429.3 sq. feet)



Total area: approx. 133.9 sq. metres (1441.3 sq. feet)