



Connells

Peterhouse Close
Peterborough



Property Description

This well-presented first-floor flat offers comfortable and practical living in a sought-after location. The property comprises two good-sized bedrooms, a bright and airy lounge, a fitted kitchen, and a bathroom. Designed for convenience, the flat also benefits from allocated parking, making it ideal for professionals, couples, or small families. With its functional layout and easy access to local amenities and transport links, this home is perfect for those seeking a low-maintenance lifestyle without compromising on space.

Entrance Hall

Two storage cupboards and door to entrance.

Lounge

Window to side and electric heater.

Kitchen

Window to side, high and low level storage with worktops over, stainless steel sink/drainer with mixer tap,

Bedroom One

Window to side, electric heater.

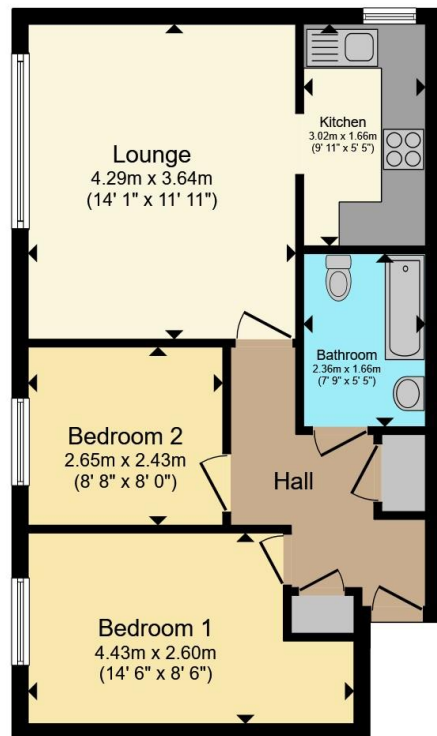
Bedroom Two

Window to side and electric heater.

Bathroom

Panelled bath, low level WC, pedestal wash hand basin,





Total floor area 49.9 m² (537 sq.ft.) approx

This floor plan is for illustrative purposes only. It is not drawn to scale. Any measurements, floor areas (including any total floor area), openings and orientation are approximate. No details are guaranteed, they cannot be relied upon for any purpose and they do not form part of any agreement. No liability is taken for any error, omission or misstatement. A party must rely upon its own inspection(s). Powered by www.propertybox.io



To view this property please contact Connells on

T 01733 314 775
E peterborough@connells.co.uk

14 Cowgate
 PETERBOROUGH PE1 1NA

EPC Rating: C Council Tax Band: B

Service Charge: Ask Agent

Ground Rent: Ask Agent

Tenure: Leasehold

view this property online connells.co.uk/Property/PBO312650

This is a Leasehold property. We are awaiting further details about the Term of the lease. For further information please contact the branch. Please note additional fees could be incurred for items such as Leasehold packs.



1. MONEY LAUNDERING REGULATIONS Intending purchasers will be asked to produce identification documentation at a later stage and we would ask for your co-operation in order that there will be no delay in agreeing the sale. 2. These particulars do not constitute part or all of an offer or contract. 3. The measurements indicated are supplied for guidance only and as such must be considered incorrect. Potential buyers are advised to recheck measurements before committing to any expense. 4. We have not tested any apparatus, equipment, fixtures, fittings or services and it is in the buyers interest to check the working condition of any appliances.

Connells Residential is registered in England and Wales under company number 1489613, Registered Office is Cumbria House, 16-20 Hockliffe Street, Leighton Buzzard, Bedfordshire, LU7 1GN. VAT Registration Number is 500 2481 05.

See all our properties at www.connells.co.uk | www.rightmove.co.uk | www.zoopla.co.uk

Property Ref: PBO312650 - 0010