

£950,000 *Freehold*



Situated on one of the most sought after roads in Holmer Green, this four bedroom detached home offers a fantastic opportunity for buyers looking to put their own stamp on a family property and make it their own. Set on a generous plot of approximately 0.25 acres and surrounded by open fields, the property enjoys a lovely semi-rural feel while still being well connected to amenities. The accommodation briefly comprises an entrance porch leading into a hallway with stairs rising to the first floor and a downstairs cloakroom. To the front is a spacious living room, which has been extended to the side, while to the rear there is a dining room opening into a large conservatory. The dining room also provides access to a fitted kitchen with a range of wall and base units. Upstairs, there are four well-proportioned bedrooms and two bathrooms. Externally, the rear garden is a very generous size and offers excellent scope for extension or further development, subject to the usual planning permissions, making it an ideal long term family home.

- POTENTIAL TO EXTEND (STPP)
- HOLMER GREEN VILLAGE
- GARAGE & AMPLE DRIVEWAY PARKING
- TWO BATHROOMS & DOWNSTAIRS W/C
- HIGHLY SOUGHT AFTER LOCATION
- LARGE PLOT OFFERING POTENTIAL TO EXTEND (STPP)
- SURROUNDED BY COUNTRYSIDE
- CATCHMENT FOR POPULAR SCHOOLS



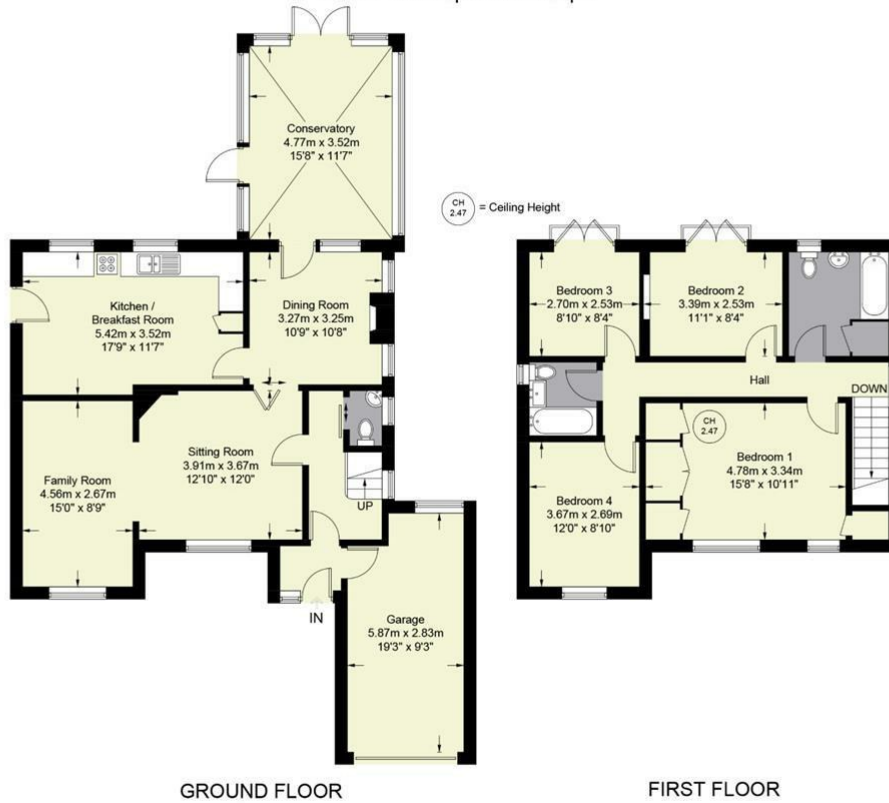
Hillside, 42 Sheepcote Dell Road, Holmer Green, Buckinghamshire,

Estate Agents ~ Lettings Agents ~ Valuers ~ Independent Mortgage Advisors

25 Park Parade, Western Dene, Hazlemere, Bucks, HP15 7AA Tel: 01494 716555 Email: haz@hursts.co.uk Web: www.hursts.co.uk

Sheepcote Dell Road

Approximate Gross Internal Area
 Ground Floor = 1092 sq ft / 101.5 sq m (Including Garage)
 First Floor = 706 sq ft / 65.6 sq m
 Total = 1798 sq ft / 167.1 sq m



Floor Plan produced for Hursts by Media Arcade Ltd ©.
 Illustration for identification purposes only. Window and door openings are approximate. Whilst every attempt is made to assure accuracy in the preparation of this plan, please check all dimensions, shapes and compass bearings before making any decisions reliant upon them.

