

THO



Arthur Road, Windsor
£775,000 | £3,400 pcm

OSBORNE HEATH



Arthur Road is a character property with high ceilings, large windows, picture rails, original fireplaces, and a modern kitchen extension.

On the ground floor there is a bay-fronted living room with wood flooring, an adjoining family room, downstairs WC, and a modern kitchen with dining and living areas. The kitchen has underfloor heating, a large central island, roof lantern and bi-folding doors out to the garden.

On the first floor there are three double bedrooms and a family bathroom with underfloor heating. There is also a large boarded loft perfect for storage.

Outside there is a south facing garden with a terrace, artificial lawn and shed and access path to the rear of the garden.

Windsor has a wide range of shops and restaurants as well as the Castle, Great Park, Racecourse and Legoland. Nearby train stations include Windsor & Eton Central and Windsor & Eton Riverside where trains run to London Paddington (via Slough) and London Waterloo. Nearby schools include Eton, The Kings House, Oakfield, The Queen Anne, St Edwards, Trevelyan, Trinity St Stephen, Upton House, Windsor Boys and Windsor Girls. Windsor is also convenient for the M4, M25 and Heathrow Airport.

Arthur Road

Windsor

- Three Double Bedrooms
- Two Receptions
- Modern Kitchen
- South Facing Garden
- Bespoke Fitted Furniture
- Extended And Refurbished
- Character
- Close To Town Centre

Council Tax band: D

Tenure: Freehold

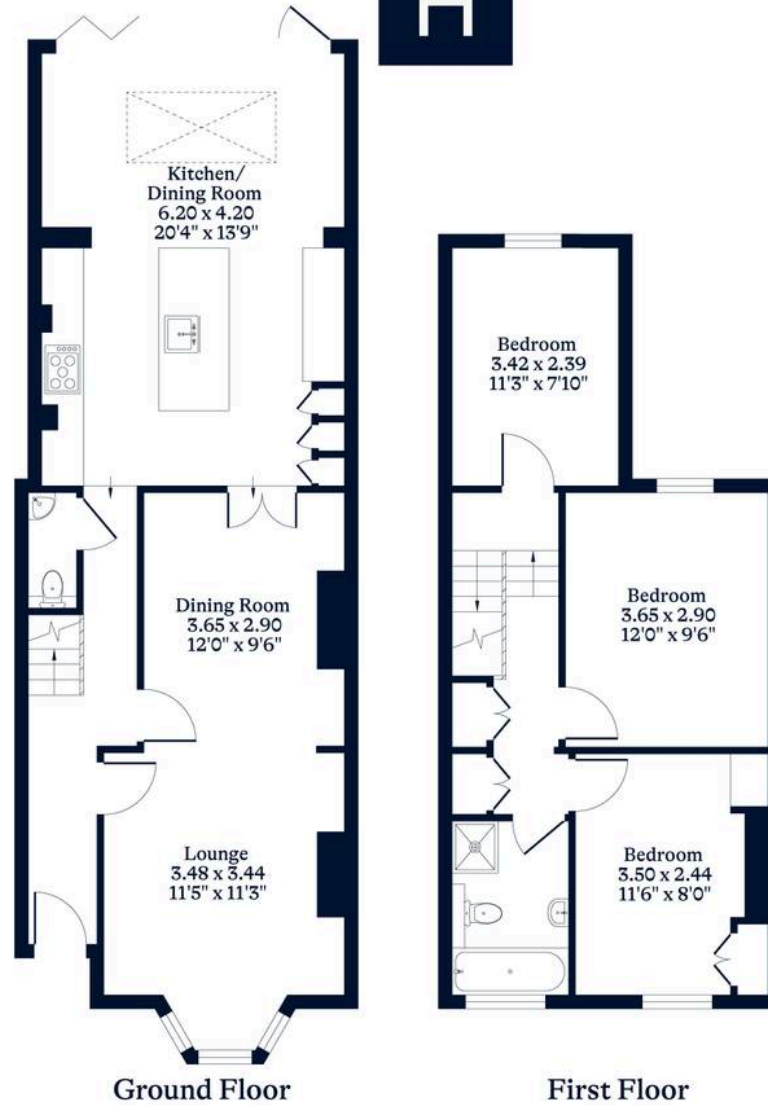
EPC Energy Efficiency Rating: D

EPC Environmental Impact Rating: D



APPROXIMATE FLOOR AREA
House - 101.78 sq m - 1095 sq ft
(Gross Internal Area)

NOT TO SCALE
This plan is for illustration purposes only



OSBORNEHEATH.CO.UK

This floor plan has been created by Property Shoot Ltd following the RICS code of measuring and is for indicative guidance only. Whilst every attempt has been made to ensure the accuracy of the floor plan contained here, measurements of doors, windows and rooms are approximate and no responsibility is taken for any error, omission or misstatement.

Details shown on this floorplan, including all measurements, areas and proportions cannot be guaranteed by either the provider or estate agency and should not be relied upon.