



Holmes Road, TW1

£5,500 Per calendar month

This immaculately presented family home is split over three floors and consists of a large reception room, an open plan kitchen/dining room, four bedrooms and two bath/shower rooms.

Holmes Road is ideally located for local schools, moments from River Thames and close to Strawberry Hill mainline station with great links into London Waterloo.

Features

- Four Double Bedrooms
- Underfloor Heating
- Utility Area
- Modern Kitchen
- Private Garden
- Summer House



Holmes Road, TW1


Presented in immaculate condition throughout is this four double bedroom family home which is split over three floors and set in the heart of Strawberry Hill.

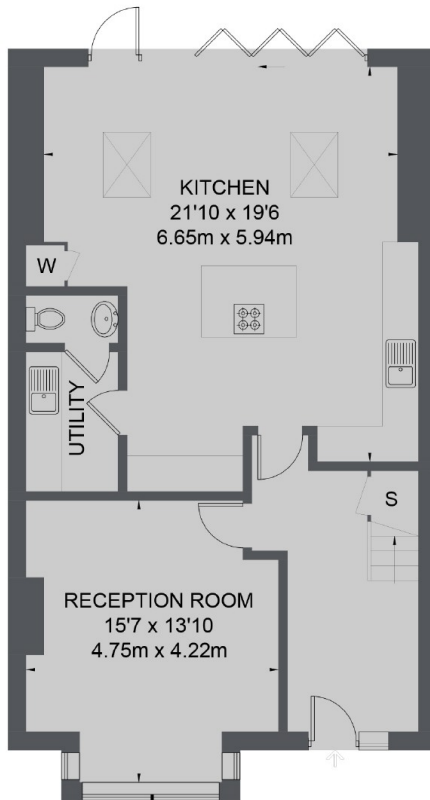
The ground floor consists of a large reception room with a working wood burning stove, a stunning open plan kitchen/dining room with underfloor heating and bi-folding doors, a large utility room and a downstairs WC.

To the first floor there are three double bedrooms, a large four-piece bathroom suite and on the top floor there is the master bedroom with a Juliet balcony, a dressing room and modern en suite. To the rear there is a private garden with a summer house.

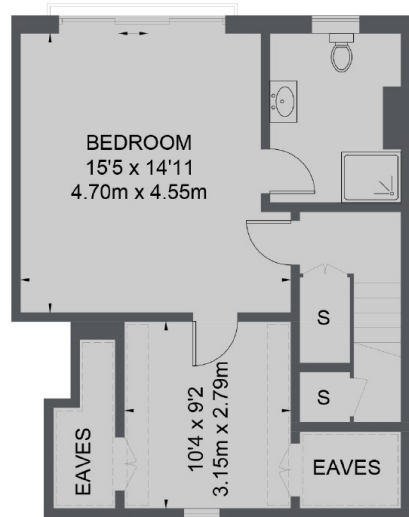


Holmes Road, Twickenham, TW1

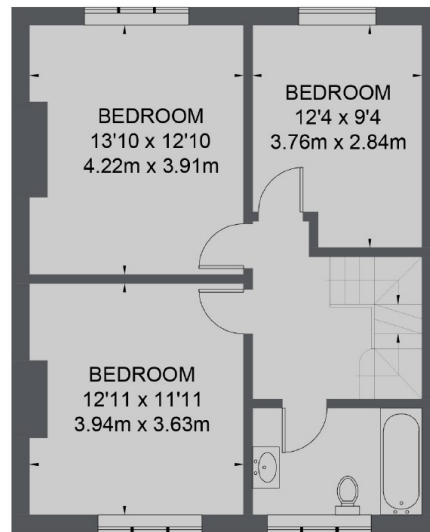
 = Reduced headroom below 1.5m / 5'0"



GROUND FLOOR



SECOND FLOOR



FIRST FLOOR

TOTAL APPROX. FLOOR AREA 1878 SQ. FT. (174.5 SQ. M.)
(INCLUDING REDUCED HEADROOM / EXCLUDING EAVES)