



Guide Price

£500,000

Freehold

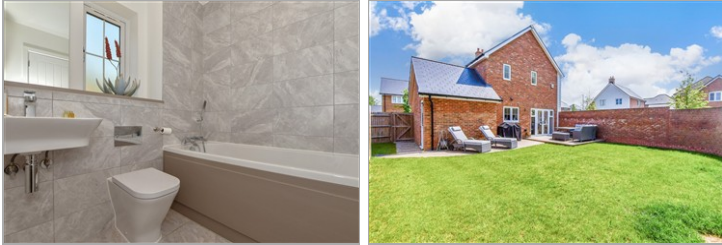
3x  2x  1x 

**Hatton Road, East
Malling, Kent, ME19**

OVER 60?

Secure this property
for up to **59% less!**

Wards
Helping you move forwards



Main features

- Beautifully presented throughout
- Spacious kitchen/diner - perfect for today's lifestyle
- Useful ground floor cloakroom
- Enjoy the luxury of both an en-suite shower room & a bathroom
- Excellent schools, amenities & leisure facilities all within easy reach

Accommodation

GROUND FLOOR

- Entrance Hall
- Cloakroom
- Kitchen/Diner: 19'1 x 10'0 (5.82m x 3.05m)
- Utility: 6'8 x 5'3 (2.03m x 1.60m)
- Lounge: 14'11 x 12'6 (4.55m x 3.81m)

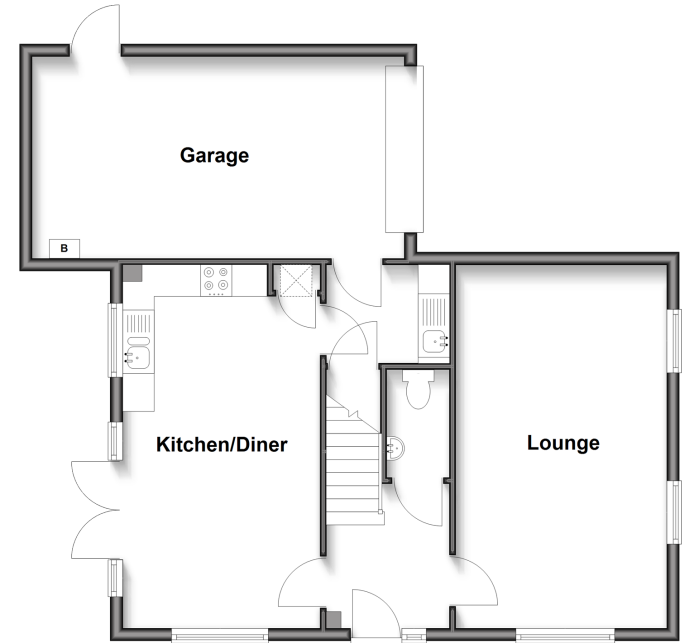
FIRST FLOOR

- Landing
- Bedroom 1: 12'10 x 12'9 (3.91m x 3.89m)
- En-Suite Shower Room
- Bedroom 2: 12'10 x 10'3 (3.91m x 3.13m)
- Bedroom 3: 9'10 x 9'2 (3.00m x 2.80m)
- Bathroom

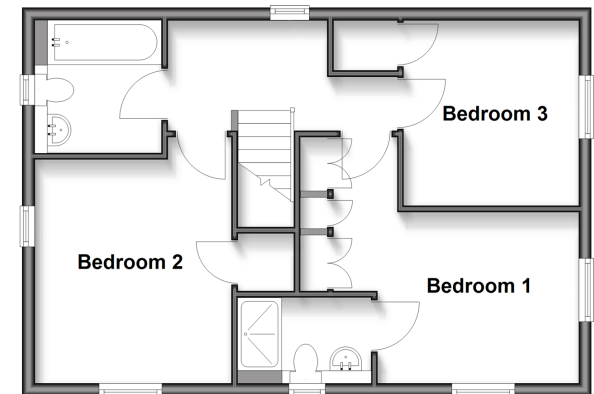
OUTSIDE

- Front & Rear Gardens
- Driveway & Garage

Ground Floor
Approx. 68.8 sq. metres (741.0 sq. feet)



First Floor
Approx. 49.6 sq. metres (533.5 sq. feet)



Unable to display material information. Please check with the branch for material information details for this property



12935455/20260427/AM/JT